



**STRONG PARTNERS.
TOUGH TRUCKS.™**



FOUR-WHEEL ELECTRIC COUNTERBALANCED LIFT TRUCKS

J2.2-3.5XN

2 200-3 500 KG



MAST AND CAPACITY INFORMATION

Values shown are for standard equipment. When using non-standard equipment these values may change. Please contact your Hyster dealer for information.

VISTA MASTS J2.2-2.50KN

	Maximum Fork Height \triangleleft (mm) ($h_3 + s$)	Back Tilt	Overall Lowered Height (mm)	Overall Extended Height (mm)	Free lift (top of forks) \diamond (mm) ($h_2 + s$)
Vista 2-Stage limited free lift	3390	5°	2195	3956 \diamond	140
	3790	5°	2395	4356 \diamond	140
	4330	5°	2745	4896 \diamond	140
	4830	5°	2995	5396 \diamond	140
Vista 2-Stage full free lift	3400	5°	2195	3966 \diamond	1625 \circ
Vista 3-Stage limited free lift	4950	5°	2145	5496 \rightarrow	1595 \times
	5550	5°	2395	6096 \rightarrow	1845 \times
	6000	5°	2595	6546 \rightarrow	2045 \times

VISTA MASTS J3.0-3.5KN

	Maximum Fork Height \triangleleft (mm) ($h_3 + s$)	Back Tilt	Overall Lowered Height (mm)	Overall Extended Height (mm)	Free lift (top of forks) \diamond (mm) ($h_2 + s$)
Vista 2-Stage limited free lift	3200	5°	2195	3861 \blacktriangleright	145
	3600	5°	2395	4261 \blacktriangleright	145
	4100	5°	2745	4761 \blacktriangleright	145
	4600	5°	2990	5261 \blacktriangleright	145
Vista 2-Stage full free lift	3205	5°	2195	3862 \blacktriangleright	1535 \blacktriangle
Vista 3-Stage limited free lift	4610	5°	2145	5252 \leftarrow	1500 $*$
	4910	5°	2295	5552 \leftarrow	1650 $*$
	5210	5°	2395	5852 \leftarrow	1750 $*$
	5810	5°	2645	6452 \leftarrow	2000 $*$

J2.2-3.5KN - capacity chart in kg @ 500 mm load centres

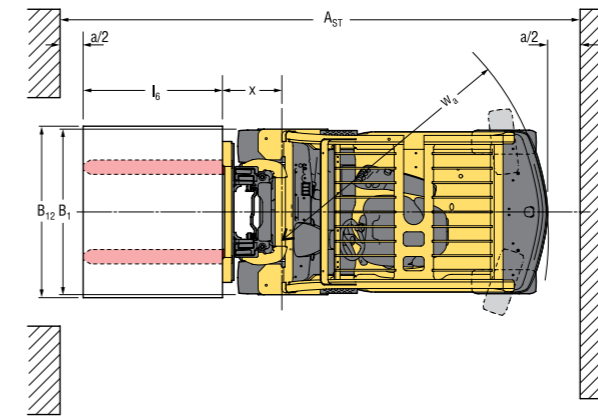
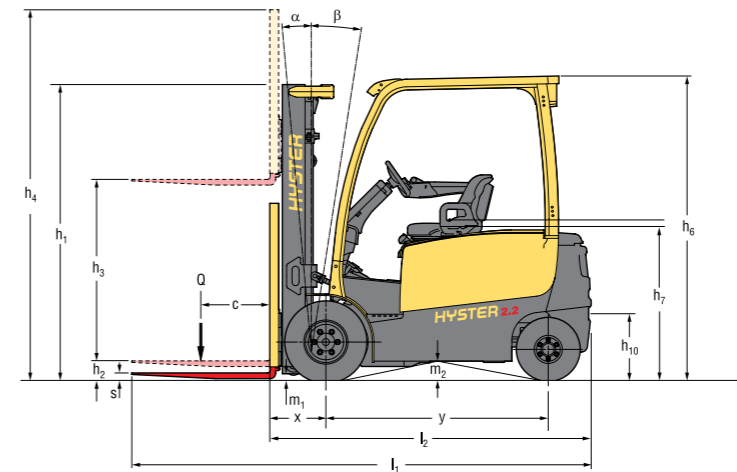
	Maximum fork height \triangleleft (mm) ($h_3 + s$)	Pneumatic Shaped Solid Tyres										
		WITHOUT sidseshift			WITH integral sidseshift			Maximum fork height \triangleleft (mm) ($h_3 + s$)	WITHOUT sidseshift		WITH integral sidseshift	
		J2.2XN 717 \square	J2.5XN 717 \square	J2.5XN 861 \square	J2.2XN 717 \square	J2.5XN 717 \square	J2.5XN 861 \square		J3.0XN 861 \square	J3.5XN 861 \square	J3.0XN 861 \square	J3.5XN 861 \square
Vista 2-Stage limited free lift	3390 3790 4330 4830	2200 2200 2500 2480	2500 2500 2500 2480	2500 2200 2200 2190	2490 2490 2470 2440	2500 2500 2500 2500	3200 3600 4100 4600	3000 3000 3000 2920	3500 3500 3500 3410	2960 2950 2940 2850	3440 3430 3420 3330	
Vista 2-Stage full free lift	3400	2200	2500	2500	2200	2500	3205	3000	3500	2960	3440	
Vista 3-Stage full free lift	4950 5550 6000	2200 2110 2020	2440 2310 2210	2500 2410 2310	2180 2070 1980	2400 2250 2150	4610 4910 5210 5810	2970 2900 2840 2690	3460 3400 3320 3170	2900 2830 2760 2600	3370 3300 3220 3060	

J2.2-3.5KN - capacity chart in kg @ 600 mm load centres

	Maximum fork height \triangleleft (mm) ($h_3 + s$)	Pneumatic Shaped Solid Tyres										
		WITHOUT sidseshift			WITH integral sidseshift			Maximum fork height \triangleleft (mm) ($h_3 + s$)	WITHOUT sidseshift		WITH integral sidseshift	
		J2.2XN 717 \square	J2.5XN 717 \square	J2.5XN 861 \square	J2.2XN 717 \square	J2.5XN 717 \square	J2.5XN 861 \square		J3.0XN 861 \square	J3.5XN 861 \square	J3.0XN 861 \square	J3.5XN 861 \square
Vista 2-Stage limited free lift	3390 3790 4330 4830	2000 2000 2000 2000	2270 2270 2270 2250	2270 2270 2270 2270	2000 2000 1990 1980	2250 2250 2240 2210	3200 3600 4100 4600	2720 2720 2720 2650	3130 3130 3130 3090	2680 2670 2660 2580	3110 3100 3090 3010	
Vista 2-Stage full free lift	3400	2000	2270	2270	2000	2260	3205	2720	3130	2680	3110	
Vista 3-Stage full free lift	4950 5550 6000	2000 1920 1830	2210 2100 2000	2270 2190 2100	1970 1870 1790	2170 2030 2070	4610 4910 5210 5810	2690 2630 2570 2440	3130 3080 3010 2870	2620 2560 2500 2350	3050 2980 2920 2760	

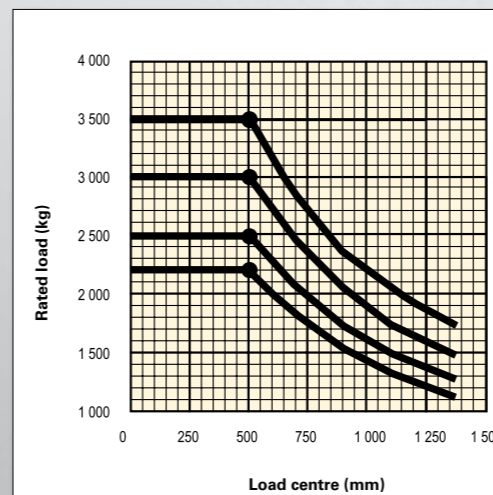
NOTE: To calculate truck capacities with alternative truck specifications to the ones shown in the above tables, please consult your Hyster dealer. The rated capacities shown are for masts in a vertical position on trucks equipped with standard or sidseshift carriage and nominal length forks. Masts above the maximum fork heights shown in the mast table are classified as high lift and, depending on the tyre/tread configuration may require reduced capacity, restricted back tilt or wide tread.

TRUCK DIMENSIONS



\odot = Centre of gravity of unladen truck
 $A_{st} = W_a + R + a$ (see lines 4.34.1 & 4.34.2)
 $R = \sqrt{(l_6 + x)^2 + \left(\frac{b_{12} - b_{13}}{2}\right)^2}$
 a = Minimum operating clearance (VDI standard = 200 mm, BITA recommendation = 300 mm)
 l_6 = Load length

RATED CAPACITIES



Load centre
Distance from front forks to centre of gravity of load.

Rated load
Based on 3-Stage full free lift vertical masts up to 5100mm bottom of forks.

J3.5XN
J3.0XN
J2.5XN
J2.2XN

NOTE:

Specifications are affected by the condition of the vehicle and how it is equipped, as well as the nature and condition of the operating area. If these specifications are critical, the proposed application should be discussed with your dealer.

- \square Max. battery
- \uparrow Bottom of forks
- \blacktriangle Without load backrest
- \circ Full suspension in compressed position specified. Add 40 mm for nominal position. Add 104 mm for battery side removal option
- \bullet Add 28 mm with load backrest
- \blacksquare h_6 subject to +/- 5 mm tolerance. Add 20mm with cab option. Add 104mm for battery side removal option. Add 124mm for battery side removal with cab option
- \star Vertical/horizontal battery removal
- \diamond With sidseshift carriage add 32mm for J2.2XN - J2.5XN-717, 34mm for J2.5XN-861 LWB, 33mm for J3.0XN, 32mm for J3.5XN
- \blacklozenge Stacking aisle width (lines 4.34.1 & 4.34.2) is based on the VDI standard calculation as shown on illustration. The British Industrial Truck Association recommends the addition of 100 mm to the total clearance (dimension a) for extra operating margin at the rear of the truck.
- \dagger Gradeability figures (lines 5.7 & 5.8) are provided for comparison of tractive performance, but are not intended to endorse the operation of the vehicle on the stated inclines. Follow instructions in the operating manual regarding operation on inclines.
- \triangle HiP Performance settings
- \bullet eLo Performance settings
- \diamond Maximum flow set through dash display.
- \circ $L_{pa,z}$, measured according to the test cycles and based on the weighting values contained in EN12053

TABLES KEY:

- \diamond Add 666mm with load backrest extension.
- \circ Deduct 666mm with load backrest extension.
- \rightarrow Add 684mm with load backrest extension
- \blacktriangle Deduct 684mm with load backrest extension.
- \times Add 583mm with load backrest extension.
- \blacktriangle Deduct 583mm with load backrest extension.
- \leftarrow Add 601mm with load backrest extension.
- $*$ Deduct 601mm with load backrest extension.
- \square Nominal Battery compartment length.
- \bullet Wide tread required. Standard tread possible but with reduced capacity. Contact your lift truck dealer
- \blacktriangledown Alternative capacities available with pneumatic tyres. Contact your lift truck dealer.
- \triangleleft Max fork height = $h_3 + s$
- \diamond Freelif (top of forks) = $h_2 + s$

NOTICE

Care must be exercised when handling elevated loads. When the carriage and/or load is elevated, truck stability is reduced. It is important that mast tilt in either direction be kept to a minimum when loads are elevated

Operators must be trained and adhere to the instructions contained in the Operating Manual.

Hyster products are subject to change without notice. Lift trucks illustrated may feature optional equipment.

CE Safety:

This truck conforms to the current EU requirements.

PRODUCT FEATURES

The Hyster J2.2-3.5XN series is available in 2 configurations – Advance & Advance+.

With enhanced performance characteristics, the Advance+ configuration has been designed to operate in intensive, high productivity applications with long runs and high lifts as an effective alternative to an engine-powered truck.

For example, in comparison to the Advance configuration, top speed (laden) has been increased to up to 21 km/h with faster acceleration and lifting speeds have been increased by 27%.

DEPENDABILITY

- Redesigned mast incorporates new chain placement and hose routings that maximise fork visibility for the driver and reliable, high performance lifting.
- Strong chassis construction and reliable, long-lasting components deliver excellent durability and stability, increasing driver confidence and enhancing productivity.
- AC motor technology on traction and hoist, with built in thermal management system, allows the truck to work reliably over long runs and in demanding work cycles, reducing downtime significantly.
- The electrical system features a CANbus communications network and Hall Effect sensors for increased reliability.
- IP54 enclosed traction motors and IP65 protection of controls and all electrical connections prevents ingress of water and dust particles, reducing the probability of truck downtime.

PRODUCTIVITY

- Dual 10 kW AC front wheel traction motors deliver smooth acceleration, fast travel and rapid direction changes. This is combined with regenerative braking and a powerful hoist motor to deliver efficient load handling in the toughest of applications.
- Designed to offer excellent manoeuvrability in working aisles, speeding up throughput, the truck features a slim counterweight, Zero Turn Radius (ZTR) steer axle and dual drive motors.
- The maintenance-free mechanical Hyster Stability Mechanism (HSM) reduces truck lean when travelling over obstacles, increasing driver confidence and productivity.
- Extended battery shift life and easy side battery removal

ERGONOMICS

- The ergonomically designed operator compartment provides a comfortable and highly productive environment for the driver. The truck offers industry leading floor space and easy on/off access is enhanced thanks to the low intermediate non-slip step (height = 231 mm).
- Low noise and whole body vibration combined with a full suspension seat with 80 mm suspension travel and a range of adjustments ensures the operator remains comfortable over long shifts.
- The fully adjustable tilt steering column with telescopic adjustment, memory tilt and synchronised steering options allows the operator to get on and off the truck quickly and easily throughout the shift, ensuring maximum comfort and increased productivity.
- The TouchPoint™ mini-lever module armrest with built in hydraulic controls, integrated directional control, emergency off switch and horn offers the ultimate in comfort and control. Alternatively, seat-side manual levers also provide handling ease.
- A 'Heads-up' display keeps the driver's field of vision clear but provides him with 'at a glance' information on truck operating conditions or performance settings.
- A choice of weather protection options promotes a comfortable working environment, whatever the conditions.

LOW COST OF OWNERSHIP

- Customisable performance settings allow energy efficiency to be ideally balanced with productivity delivering high throughput at lower operating cost.
- The Vehicle System Manager (VSM) allows adjustment of truck performance parameters and monitors key functions, leading to application matched performance and minimum downtime.
- Durable, quality components, including virtually maintenance free oil immersed brakes and brushless AC motors offer long term reliability and lower maintenance costs.
- In-built thermal protection on traction motors and advanced cooling system protect truck components, leading to reduced maintenance costs.
- Fast delivery of diagnostic information allows precise troubleshooting, easy maintenance planning and lower costs.

SERVICEABILITY

- Standard 1 000 hour service interval.
- Access to diagnostic information via dash display with or plug-in port and laptop. This functionality saves technician time when setting up multiple items.
- Easily removable two-piece floor plate provides easy access to power contactor, traction controller fuses and relays.
- Motor, pump, controller and oil tank are located in the counterweight and are easily accessible, requiring only 2 thumb screws to be removed.
- Automatic park brake system can be released manually by activating lever arrangement underneath floor plates, reducing downtime.
- LED master, indicator, brake and back-up lights are designed to last the lifetime of the truck. Combined with the approved LED work lights

STRONG PARTNERS. TOUGH TRUCKS.™

FOR DEMANDING OPERATIONS, EVERYWHERE.

Hyster supplies a complete range of warehouse equipment, IC and electric counterbalanced trucks, container handlers and reach stackers. Hyster is committed to being much more than a lift truck supplier.

Our aim is to offer a complete partnership capable of responding to the full spectrum of material handling issues: Whether you need professional consultancy on your fleet management, fully qualified service support, or reliable parts supply, you can depend on Hyster.

Our network of highly trained dealers provides expert, responsive local support. They can offer cost-effective finance packages and introduce effectively managed maintenance programmes to ensure that you get the best possible value. Our business is dealing with your material handling needs so you can focus on the success of your business today and in the future.



HYSTER EUROPE

Centennial House, Frimley Business Park, Frimley, Surrey, GU16 7SG, England.

Tel: +44 (0) 1276 538500



www.hyster.eu



infoeurope@hyster.com



[/HysterEurope](https://www.facebook.com/HysterEurope)





[@HysterEurope](https://twitter.com/HysterEurope)



[/HysterEurope](https://www.youtube.com/HysterEurope)



HYSTER  and FORTENS are registered trademarks in the European Union and certain other jurisdictions.

MONOTROL is a registered trademark, and DURAMATCH and  are trademarks in the United States and in certain other jurisdictions.

Hyster products are subject to change without notice. Lift trucks illustrated may feature optional equipment.

A division of NACCO Materials Handling Limited.