



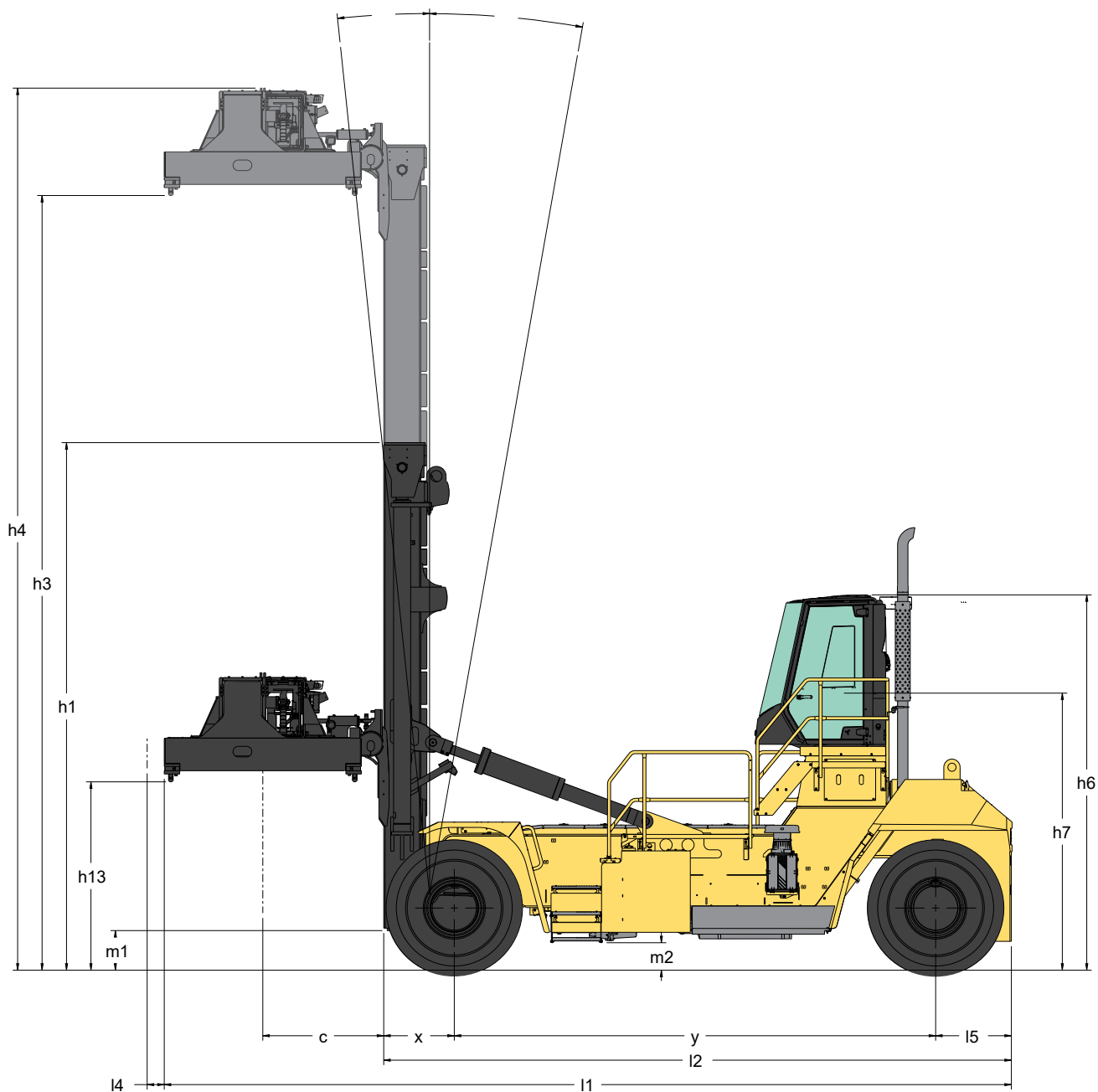
H40-52XD-CH SERIES

CONTAINER HANDLER
PRODUCT TECHNICAL GUIDE

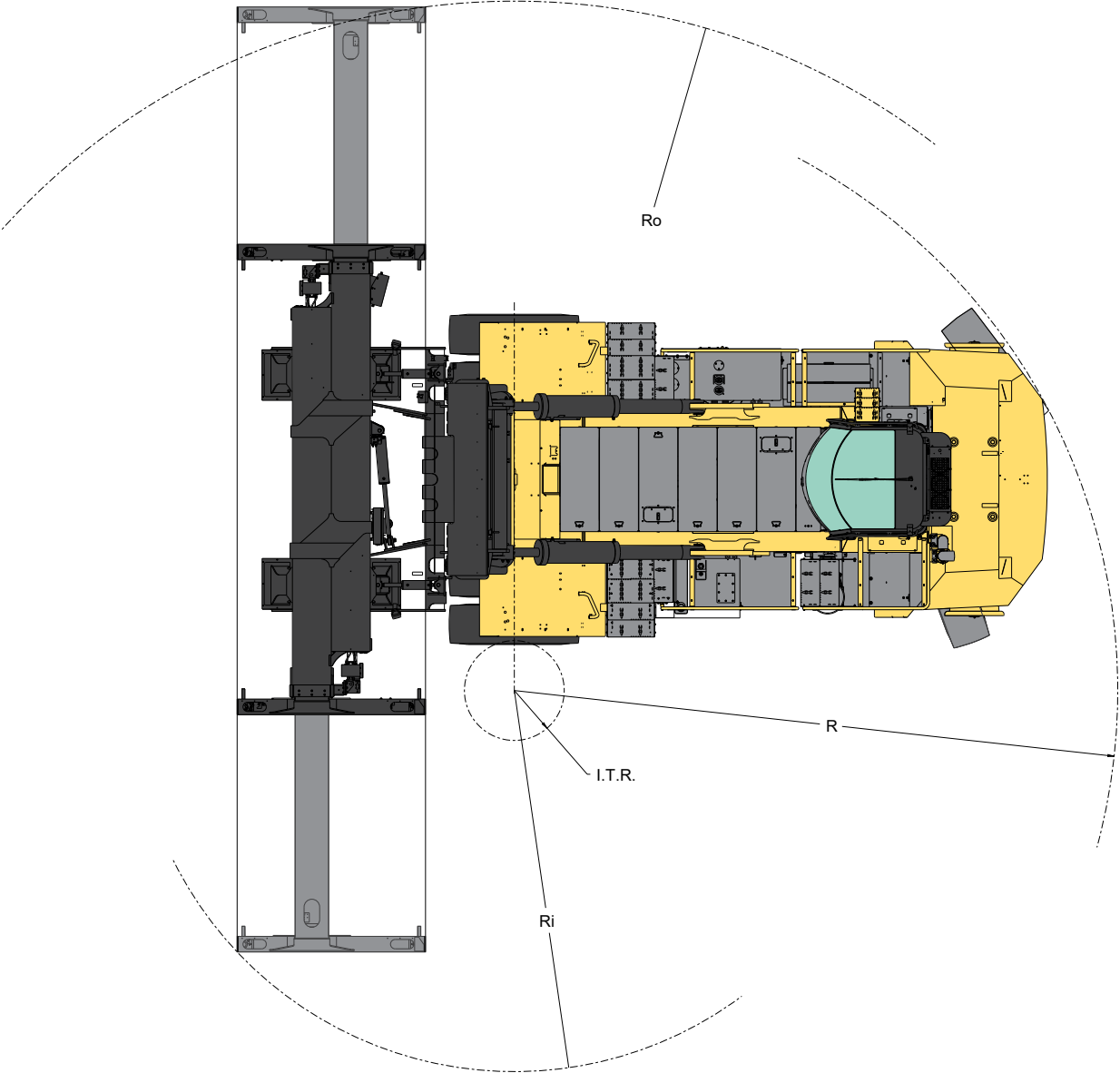


WWW.HYSTER.COM

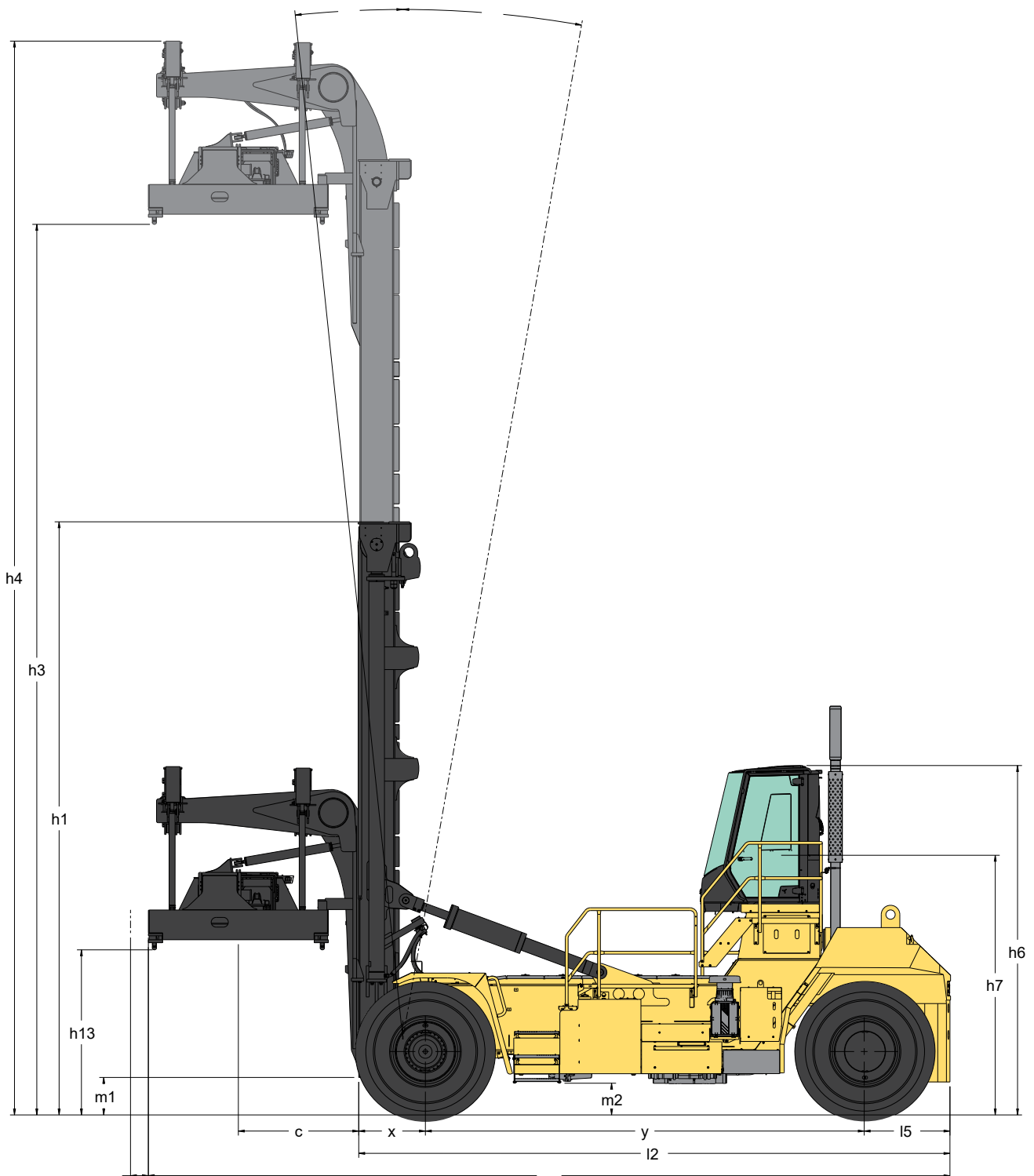
DEDICATED CARRIAGE DIMENSIONS



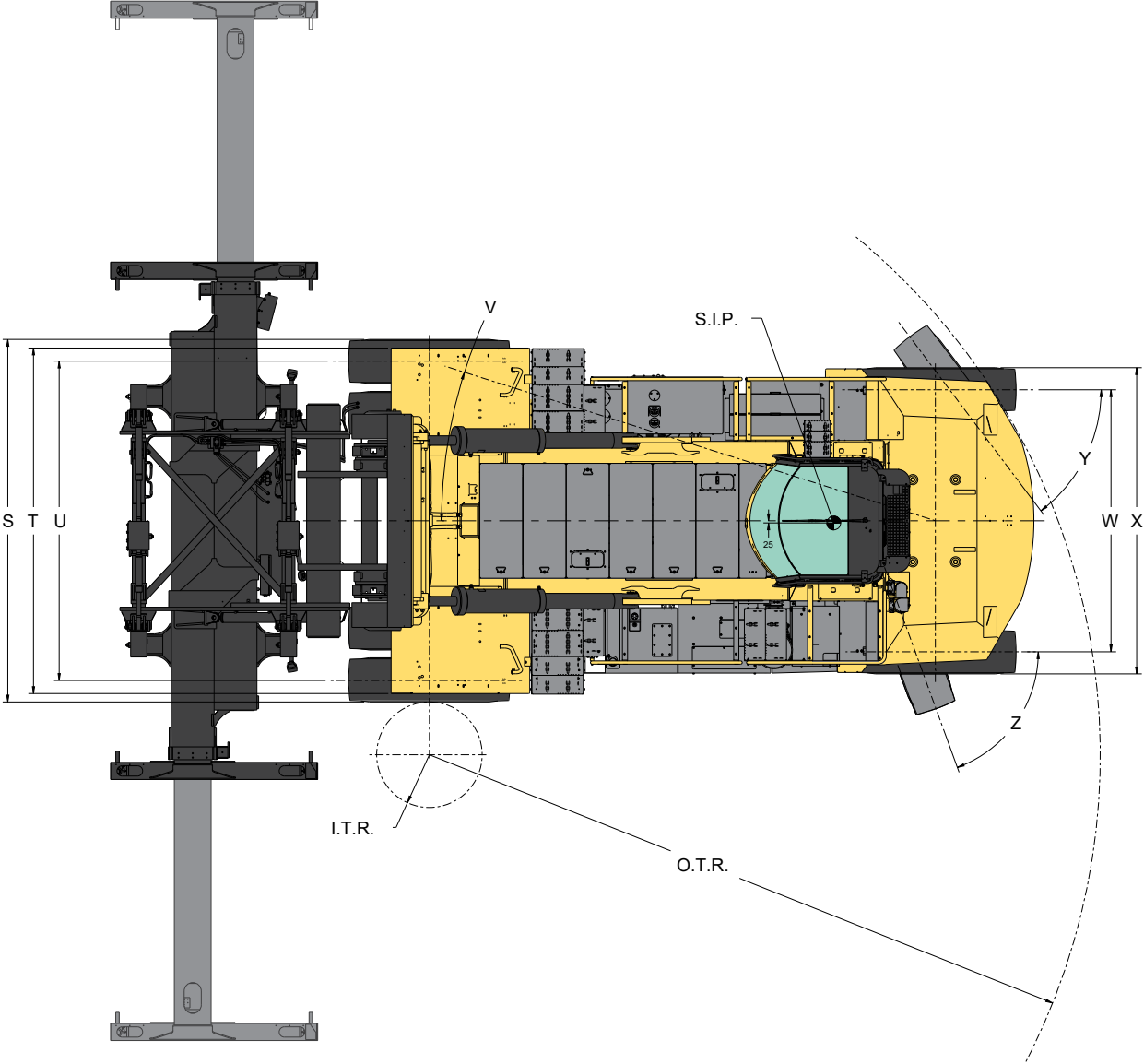
DEDICATED CARRIAGE DIMENSIONS



GANTRY CARRIAGE DIMENSIONS



GANTRY CARRIAGE DIMENSIONS



H40XD-CH 4 HIGH SPECIFICATIONS

GENERAL		Loaded container handler truck		4-high 18.00-25		
	1-1	Manufacturer		HYSTER		
	1-2	Model designation		H40XD-CH4		
	1-3	Drive		Diesel		
	1-4	Operator type		Seated		
	1-5-1	Rated load capacity - extended	kg	35,300		
	1-5-2	Rated load capacity - retracted	kg	31,750		
	1-6-1	Load center distance - extended	mm	1,610		
	1-6-2	Load center distance - retracted	mm	1,400		
	1-8	Load distance (1)	mm	870		
WT	1-9	Wheelbase	mm	5,900		
	1-10-1	Stacking height at first row (number x container height)	mm	4 x 9'6"		
	1-10-2	Stacking height at first row (number x container height)	mm	4 x 8'6"		
	2-1	Total truck weight without load (2)	kg	62,419		
	2-2	Axle loading with load, front / rear	kg	91,595	6,214	
	2-3	Axle loading without load, front / rear	kg	42,713	19,706	
	WHEELS	3-1	Tire type		Pneumatic	
		3-2	Tire size, front		18.00 - 25 40PR	
		3-3	Tire size, rear		18.00 - 25 40PR	
		3-5	Number of tires, front / rear (X driven)		x 4 / 2	
3-6		Track width, front	mm	3,703		
3-7		Track width, rear	mm	3,060		
DIMENSIONS		4-1	Mast tilt, forward / back	degree	6 / 10	
		4-2	Height, mast lowered (3)	mm	7,966	
		4-3	Free lift	mm	0	
		4-4-1	Lift height under twistlocks, minimum (4)	mm	2,280	
	4-4-2	Lift height under twistlocks, maximum (4)	mm	12,034		
	4-5	Height, mast extended	mm	13,320		
	4-7	Height, top of operator compartment closed cab	mm	4,660		
	4-7-1	Height, top of operator compartment closed cab without A/C	mm	4,703		
	4-7-2	Height, top of operator compartment closed cab with A/C	mm	4,758		
	4-7-3	Height, top of operator compartment with strobe light	mm	4,780		
	4-7-4	Height, top of operator compartment closed cab with work lights	mm	4,839		
	4-7-5	Height, top of operator compartment closed cab with A/C and strobe light	mm	4,780		
	4-8	Seat height to SIP (5)	mm	3,525		
	4-17	Overhang	mm	1,025		
	4-19	Overall length	mm	10,330		
	4-20	Length to face of spreader	mm	7,710		
	4-21	Overall width across all of truck	mm	4,200		
	4-23	Carriage spreader	Type	MPS Dedicated		
	4-24-1	Spreader width, retracted	mm	6,100		
	4-24-2	Spreader width, extended	mm	12,200		
4-28	Slewing, 6° total	mm	+/- 210			
4-30	Sideshift	mm	+/- 216			
4-31	Ground clearance, below mast - laden	mm	471			
4-32	Ground clearance, center of wheelbase	mm	341			
4-34-1	Aisle width, 20' container (no operating clearance)	mm	11,430			
4-34-2	Aisle width, 20' container with 7.8" (200 mm) operating clearance	mm	11,630			
4-34-3	Aisle width, 20' container with 10% operating clearance	mm	12,575			
4-34-4	Aisle width, 40' container (no operating clearance)	mm	14,045			
4-34-5	Aisle width, 40' container with 7.8" (200 mm) operating clearance	mm	14,245			
4-34-6	Aisle width, 40' container with 10% operating clearance	mm	15,450			
4-35	Outside turning radius	mm	7,875			
PERFORMANCE		TIER 4F				
	5-1	Travel speed, with / without load	km/h	20	22	
	5-1-1	Travel speed, with / without load, backwards	km/h	20	22	
	5-2	Lifting speed, with / without load	m/s	0.26	0.30	
	5-3	Lowering speed, with / without load	m/s	0.50	0.50	
	5-5	Drawbar pull - 1 mph (1.6 km/h) with / without load	kN	275	275	
	5-5-1	Drawbar pull - stall with / without load	kN	275	275	
	5-7	Gradeability - 1 mph (1.6 km/h), with / without load (6)	%	26	40	
	5-7-1	Gradeability - stall, with / without load (6)	%	28	47	
		TIER 3				
	5-1	Travel speed, with / without load	km/h	20	22	
	5-1-1	Travel speed, with / without load, backwards	km/h	20	22	
	5-2	Lifting speed, with / without load	m/s	0.26	0.30	
	5-3	Lowering speed, with / without load	m/s	0.50	0.50	
	5-5	Drawbar pull - 1 mph (1.6 km/h), with /without load	kN	275	275	
	5-5-1	Drawbar pull - stall, with / without load	kN	275	275	
	5-7	Gradeability - 1 mph (1.6 km/h), with / without load (6)	%	26	40	
	5-7-1	Gradeability - stall, with / without load (6)	%	28	47	

H44XD-CH & H48XD-CH 4-HIGH SPECIFICATIONS

		4-high 18.00-25					
		HYSTER					
		H44XD-CH4		H48XD-CH4			
GENERAL	1-1	Loaded container handler truck					
	1-1	Manufacturer	HYSTER				
	1-2	Model designation	H44XD-CH4		H48XD-CH4		
	1-3	Drive	Diesel				
	1-4	Operator type	Seated				
	1-5-1	Rated load capacity - extended	kg	39,300	40,000		
	1-5-2	Rated load capacity - retracted	kg	35,400	39,590		
	1-6-1	Load center distance - extended	mm	1,610			
	1-6-2	Load center distance - retracted	mm	1,400			
	1-8	Load distance (1)	mm	870			
	1-9	Wheelbase	mm	5,900			
	1-10-1	Stacking height at first row (number x container height)	4 x 9'6"				
	1-10-2	Stacking height at first row (number x container height)	4 x 8'6"				
	WT	2-1	Total truck weight without load (2)	kg	65,219	66,919	
2-2		Axle loading with load, front / rear	kg	97,202	7,317	98,610	8,309
2-3		Axle loading without load, front / rear	kg	42,781	22,438	43,220	23,699
WHEELS	3-1	Tire type	Pneumatic				
	3-2	Tire size, front	18.00 - 25 40PR				
	3-3	Tire size, rear	18.00 - 25 40PR				
	3-5	Number of tires, front / rear (X driven)	x 4 / 2				
	3-6	Track width, front	mm	3,703			
	3-7	Track width, rear	mm	3,060			
	DIMENSIONS	4-1	Mast tilt, forward / back	degree	6 / 10		
4-2		Height, mast lowered (3)	mm	7,966			
4-3		Free lift	mm	0			
4-4-1		Lift height under twistlocks, minimum (4)	mm	2,280			
4-4-2		Lift height under twistlocks, maximum (4)	mm	12,034			
4-5		Height, mast extended	mm	13,320			
4-7		Height, top of operator compartment closed cab	mm	4,660			
4-7-1		Height, top of operator compartment closed cab without A/C	mm	4,703			
4-7-2		Height, top of operator compartment closed cab with A/C	mm	4,758			
4-7-3		Height, top of operator compartment with strobe light	mm	4,780			
4-7-4		Height, top of operator compartment closed cab with work lights	mm	4,839			
4-7-5		Height, top of operator compartment closed cab with A/C and strobe light	mm	4,780			
4-8		Seat height to SIP (5)	mm	3,525			
4-17		Overhang	mm	1,025			
4-19		Overall length	mm	10,330			
4-20		Length to face of spreader	mm	7,710			
4-21		Overall width across all of truck	mm	4,200			
4-23		Carriage spreader	Type	MPS Dedicated			
4-24-1		Spreader width, retracted	mm	6,100			
4-24-2		Spreader width, extended	mm	12,200			
4-28		Slewing, 6° total	mm	+/- 210			
4-30		Sideshift	mm	+/- 216			
4-31		Ground clearance, below mast - laden	mm	465			
4-32		Ground clearance, center of wheelbase	mm	335			
4-34-1		Aisle width, 20' container (no operating clearance)	mm	11,430			
4-34-2		Aisle width, 20' container with 7.8" (200 mm) operating clearance	mm	11,630			
4-34-3		Aisle width, 20' container with 10% operating clearance	mm	12,575			
4-34-4		Aisle width, 40' container (no operating clearance)	mm	14,045			
4-34-5		Aisle width, 40' container with 7.8" (200 mm) operating clearance	mm	14,245			
4-34-6		Aisle width, 40' container with 10% operating clearance	mm	15,450			
4-35		Outside turning radius	mm	7,875			
PERFORMANCE		TIER 4F					
		5-1	Travel speed, with / without load	km/h	20	22	
		5-1-1	Travel speed, with / without load, backwards	km/h	20	223	
		5-2	Lifting speed, with / without load	m/s	0.26	0.30	
	5-3	Lowering speed, with / without load	m/s	0.50	0.50		
	5-5	Drawbar pull - 1 mph (1.6 km/h) with / without load	kN	275	275		
	5-5-1	Drawbar pull - stall with / without load	kN	275	275		
	5-7	Gradeability - 1 mph (1.6 km/h), with / without load (6)	%	26	40	29	40
	5-7-1	Gradeability - stall, with / without load (6)	%	28	47	30	49
	TIER 3						
	5-1	Travel speed, with / without load	km/h	20	22		
	5-1-1	Travel speed, with / without load, backwards	km/h	20	22		
	5-2	Lifting speed, with / without load	m/s	0.26	0.30		
	5-3	Lowering speed, with / without load	m/s	0.50	0.50		
	5-5	Drawbar pull - 1 mph (1.6 km/h), with /without load	kN	275	275		
	5-5-1	Drawbar pull - stall, with / without load	kN	275	275		
	5-7	Gradeability - 1 mph (1.6 km/h), with / without load (6)	%	26	40	25	38
	5-7-1	Gradeability - stall, with / without load (6)	%	28	47		

H50XD-CH 5-HIGH SPECIFICATIONS

		5-high 18.00-25		5-high 18.00-33				
GENERAL	1-1	Manufacturer	HYSTER					
	1-2	Model designation	H50XD-CH5					
	1-3	Drive	Diesel					
	1-4	Operator type	Seated					
	1-5-1	Rated load capacity - extended	kg	41,000				
	1-5-2	Rated load capacity - retracted	kg	37,700				
	1-6-1	Load center distance - extended	mm	1,749				
	1-6-2	Load center distance - retracted	mm	1,509				
	1-8	Load distance (1)	mm	900				
	1-9	Wheelbase	mm	5,900				
	1-10-1	Stacking height at first row (number x container height)		5 x 9'6"				
	1-10-2	Stacking height at first row (number x container height)		5 x 8'6"				
	WT	2-1	Total truck weight without load (2)	kg	74,535		75,473	
		2-2	Axle loading with load, front / rear	kg	107,524	8,011	108,149	8,324
2-3		Axle loading without load, front / rear	kg	49,892	24,543	50,517	24,856	
WHEELS	3-1	Tire type	Pneumatic					
	3-2	Tire size, front	18.00 - 25 40PR		18.00 - 33 36PR			
	3-3	Tire size, rear	18.00 - 25 40PR		18.00 - 33 36PR			
	3-5	Number of tires, front / rear (X driven)	x 4 / 2					
	3-6	Track width, front	mm	3,703				
	3-7	Track width, rear	mm	3,060				
DIMENSIONS	4-1	Mast tilt, forward / back	degree	6 / 10				
	4-2	Height, mast lowered (3)	mm	9,357		9,451		
	4-3	Free lift	mm	0				
	4-4-1	Lift height under twistlocks, minimum (4)	mm	2,280				
	4-4-2	Lift height under twistlocks, maximum (4)	mm	14,930				
	4-5	Height, mast extended	mm	17,298		17,392		
	4-7	Height, top of operator compartment closed cab	mm	4,660		4,750		
	4-7-1	Height, top of operator compartment closed cab without A/C	mm	4,703		4,793		
	4-7-2	Height, top of operator compartment closed cab with A/C	mm	4,758		4,848		
	4-7-3	Height, top of operator compartment with strobe light	mm	4,780		4,872		
	4-7-4	Height, top of operator compartment closed cab with work lights	mm	4,839		4,931		
	4-7-5	Height, top of operator compartment closed cab with A/C and strobe light	mm	4,780		4,872		
	4-8	Seat height to SIP (5)	mm	3,525		3,615		
	4-17	Overhang	mm	1,025				
	4-19	Overall length	mm	10,485				
	4-20	Length to face of spreader	mm	7,740				
	4-21	Overall width across all of truck	mm	4,200				
	4-23	Carriage spreader	Type	MPS Gantry				
	4-24-1	Spreader width, retracted	mm	6,100				
	4-24-2	Spreader width, extended	mm	12,200				
	4-28	Slewing, 6° total	mm	+/- 240				
	4-30	Sideshift	mm	+/- 400				
	4-31	Ground clearance, below mast - laden	mm	358		460		
	4-32	Ground clearance, center of wheelbase	mm	329		431		
	4-34-1	Aisle width, 20' container (no operating clearance)	mm	11,595				
	4-34-2	Aisle width, 20' container with 7.8" (200 mm) operating clearance	mm	11,795				
	4-34-3	Aisle width, 20' container with 10% operating clearance	mm	12,755				
	4-34-4	Aisle width, 40' container (no operating clearance)	mm	14,045				
	4-34-5	Aisle width, 40' container with 7.8" (200 mm) operating clearance	mm	14,245				
	4-34-6	Aisle width, 40' container with 10% operating clearance	mm	15,450				
	4-35	Outside turning radius	mm	7,875				
	PERFORMANCE	TIER 4F						
		5-1	Travel speed, with / without load	km/h	20		22	
		5-1-1	Travel speed, with / without load, backwards	km/h	20		22	
		5-2	Lifting speed, with / without load	m/s	0.26		0.30	
5-3		Lowering speed, with / without load	m/s	0.50		0.50		
5-5		Drawbar pull - 1 mph (1.6 km/h) with / without load	kN	275		275		
5-5-1		Drawbar pull - stall with / without load	kN	275		275		
5-7		Gradeability - 1 mph (1.6 km/h), with / without load (6)	%	24		39		
5-7-1		Gradeability - stall, with / without load (6)	%	27		41		
TIER 3								
5-1		Travel speed, with / without load	km/h	20		22		
5-1-1		Travel speed, with / without load, backwards	km/h	20		22		
5-2		Lifting speed, with / without load	m/s	0.26		0.30		
5-3		Lowering speed, with / without load	m/s	0.50		0.50		
5-5		Drawbar pull - 1 mph (1.6 km/h), with /without load	kN	275		275		
5-5-1		Drawbar pull - stall, with / without load	kN	275		275		
5-7		Gradeability - 1 mph (1.6 km/h), with / without load (6)	%	24		39		
5-7-1		Gradeability - stall, with / without load (6)	%	27		41		

H52XD-CH 5 HIGH SPECIFICATIONS

				5-high 18.00-25		5-high 18.00-33		
GENERAL	1-1	Loaded container handler truck						
	1-1	Manufacturer		HYSTER				
	1-2	Model designation		H52XD-CH5				
	1-3	Drive		Diesel				
	1-4	Operator type		Seated				
	1-5-1	Rated load capacity - extended	kg	41,000				
	1-5-2	Rated load capacity - retracted	kg	41,000				
	1-6-1	Load center distance - extended	mm	1,749				
	1-6-2	Load center distance - retracted	mm	1,509				
	1-8	Load distance (1)	mm	900				
1-9	Wheelbase	mm	5,900					
1-10-1	Stacking height at first row (number x container height)	mm	5 x 9'6"					
1-10-2	Stacking height at first row (number x container height)	mm	5 x 8'6"					
WT	2-1	Total truck weight without load (2)	kg	77,512		78,450		
	2-2	Axle loading with load, front / rear	kg	106,690	11,822	107,316	12,135	
	2-3	Axle loading without load, front / rear	kg	49,058	28,354	49,684	28,667	
WHEELS	3-1	Tire type		Pneumatic				
	3-2	Tire size, front		18.00 - 25 40PR		18.00 - 33 36PR		
	3-3	Tire size, rear		18.00 - 25 40PR		18.00 - 33 36PR		
	3-5	Number of tires, front / rear (X driven)		x 4 / 2				
	3-6	Track width, front	mm	3,703				
	3-7	Track width, rear	mm	3,060				
DIMENSIONS	4-1	Mast tilt, forward / back	degree	6 / 10				
	4-2	Height, mast lowered (3)	mm	9,352		9,445		
	4-3	Free lift	mm	0				
	4-4-1	Lift height under twistlocks, minimum (4)	mm	2,280				
	4-4-2	Lift height under twistlocks, maximum (4)	mm	14,930				
	4-5	Height, mast extended	mm	17,293		17,386		
	4-7	Height, top of operator compartment closed cab	mm	4,660		4,750		
	4-7-1	Height, top of operator compartment closed cab without A/C	mm	4,703		4,793		
	4-7-2	Height, top of operator compartment closed cab with A/C	mm	4,758		4,848		
	4-7-3	Height, top of operator compartment with strobe light	mm	4,780		4,872		
	4-7-4	Height, top of operator compartment closed cab with work lights	mm	4,839		4,931		
	4-7-5	Height, top of operator compartment closed cab with A/C and strobe light	mm	4,780		4,872		
	4-8	Seat height to SIP (5)	mm	3,525		3,615		
	4-17	Overhang	mm	1,093				
	4-19	Overall length	mm	10,698				
	4-20	Length to face of spreader	mm	7,968				
	4-21	Overall width across all of truck	mm	4,200				
	4-23	Carriage spreader	Type	MPS Gantry				
	4-24-1	Spreader width, retracted	mm	6,100				
	4-24-2	Spreader width, extended	mm	12,200				
4-28	Slewing, 6° total	mm	+/- 240					
4-30	Sideshift	mm	+/- 400					
4-31	Ground clearance, below mast - laden	mm	357					
4-32	Ground clearance, center of wheelbase	mm	328					
4-34-1	Aisle width, 20' container (no operating clearance)	mm	11,715					
4-34-2	Aisle width, 20' container with 7.8" (200 mm) operating clearance	mm	11,915					
4-34-3	Aisle width, 20' container with 10% operating clearance	mm	12,885					
4-34-4	Aisle width, 40' container (no operating clearance)	mm	14,045					
4-34-5	Aisle width, 40' container with 7.8" (200 mm) operating clearance	mm	14,245					
4-34-6	Aisle width, 40' container with 10% operating clearance	mm	15,450					
4-35	Outside turning radius	mm	8,015					
PERFORMANCE	TIER 4F							
	5-1	Travel speed, with / without load	km/h	21		23		
	5-1-1	Travel speed, with / without load, backwards	km/h	21		23		
	5-2	Lifting speed, with / without load	m/s	0.26		0.30		
	5-3	Lowering speed, with / without load	m/s	0.50		0.50		
	5-5	Drawbar pull - 1 mph (1.6 km/h) with / without load	kN	248		248		
	5-5-1	Drawbar pull - stall with / without load	kN	275		275		
	5-7	Gradeability - 1 mph (1.6 km/h), with / without load (6)	%	24		38		
	5-7-1	Gradeability - stall, with / without load (6)	%	34		46		
	TIER 3							
	5-1	Travel speed, with / without load	km/h	21		23		
	5-1-1	Travel speed, with / without load, backwards	km/h	21		23		
	5-2	Lifting speed, with / without load	m/s	0.26		0.30		
	5-3	Lowering speed, with / without load	m/s	0.50		0.50		
	5-5	Drawbar pull - 1 mph (1.6 km/h), with /without load	kN	248		248		
	5-5-1	Drawbar pull - stall, with / without load	kN	275		275		
	5-7	Gradeability - 1 mph (1.6 km/h), with / without load (6)	%	24		38		
	5-7-1	Gradeability - stall, with / without load (6)	%	34		46		

H52XD-CH 6-HIGH SPECIFICATIONS

		6-high 18.00-25		6-high 18.00-33		
GENERAL	1-1	Loaded container handler truck				
	1-1	Manufacturer	HYSTER			
	1-2	Model designation	H52XD-CH6			
	1-3	Drive	Diesel			
	1-4	Operator type	Seated			
	1-5-1	Rated load capacity - extended	kg	37,000		
	1-5-2	Rated load capacity - retracted	kg	37,000		
	1-6-1	Load center distance - extended	mm	1,749		
	1-6-2	Load center distance - retracted	mm	1,509		
	1-8	Load distance (1)	mm	900		
1-9	Wheelbase	mm	5,900			
1-10-1	Stacking height at first row (number x container height)			6 x 9'6"		
1-10-2	Stacking height at first row (number x container height)			6 x 8'6"		
WT	2-1	Total truck weight without load (2)	kg	80,505		81,443
	2-2	Axle loading with load, front / rear	kg	109,897	11,608	110,522 11,921
	2-3	Axle loading without load, front / rear	kg	52,265	28,140	52,890 28,453
WHEELS	3-1	Tire type	Pneumatic			
	3-2	Tire size, front	18.00 - 25 40PR		18.00 - 33 36PR	
	3-3	Tire size, rear	18.00 - 25 40PR		18.00 - 33 36PR	
	3-5	Number of tires, front / rear (X driven)	x 4 / 2			
	3-6	Track width, front	mm	4,400		
	3-7	Track width, rear	mm	3,060		
DIMENSIONS	4-1	Mast tilt, forward / back	degree	6 / 10		
	4-2	Height, mast lowered (3)	mm	10,802	10,895	
	4-3	Free lift	mm	0		
	4-4-1	Lift height under twistlocks, minimum (4)	mm	2,280		
	4-4-2	Lift height under twistlocks, maximum (4)	mm	17,830		
	4-5	Height, mast extended	mm	20,193		20,286
	4-7	Height, top of operator compartment closed cab	mm	4,660		4,750
	4-7-1	Height, top of operator compartment closed cab without A/C	mm	4,703		4,793
	4-7-2	Height, top of operator compartment closed cab with A/C	mm	4,758		4,848
	4-7-3	Height, top of operator compartment with strobe light	mm	4,780		4,872
	4-7-4	Height, top of operator compartment closed cab with work lights	mm	4,839		4,931
	4-7-5	Height, top of operator compartment closed cab with A/C and strobe light	mm	4,780		4,872
	4-8	Seat height to SIP (5)	mm	3,525		3,615
	4-17	Overhang	mm	1,093		
	4-19	Overall length	mm	10,698		
	4-20	Length to face of spreader	mm	7,968		
	4-21	Overall width across all of truck	mm	4,900		
	4-23	Carriage spreader	Type	MPS Gantry		
	4-24-1	Spreader width, retracted	mm	6,100		
	4-24-2	Spreader width, extended	mm	12,200		
	4-28	Slewing, 6° total	mm	+/- 240		
	4-30	Sideshift	mm	+/- 400		
	4-31	Ground clearance, below mast - laden	mm	357	452	
4-32	Ground clearance, center of wheelbase	mm	328	423		
4-34-1	Aisle width, 20' container (no operating clearance)	mm	11,715			
4-34-2	Aisle width, 20' container with 7.8" (200 mm) operating clearance	mm	11,915			
4-34-3	Aisle width, 20' container with 10% operating clearance	mm	12,885			
4-34-4	Aisle width, 40' container (no operating clearance)	mm	14,045			
4-34-5	Aisle width, 40' container with 7.8" (200 mm) operating clearance	mm	14,245			
4-34-6	Aisle width, 40' container with 10% operating clearance	mm	15,450			
4-35	Outside turning radius	mm	8,015			
PERFORMANCE	TIER 4F					
	5-1	Travel speed, with / without load	km/h	21	23	
	5-1-1	Travel speed, with / without load, backwards	km/h	21	23	
	5-2	Lifting speed, with / without load	m/s	0.26	0.30	
	5-3	Lowering speed, with / without load	m/s	0.50	0.50	
	5-5	Drawbar pull - 1 mph (1.6 km/h) with / without load	kN	248	248	
	5-5-1	Drawbar pull - stall with / without load	kN	275	275	
	5-7	Gradeability - 1 mph (1.6 km/h), with / without load (6)	%	24	38	
	5-7-1	Gradeability - stall, with / without load (6)	%	34	46	
	TIER 3					
	5-1	Travel speed, with / without load	km/h	21	23	
	5-1-1	Travel speed, with / without load, backwards	km/h	21	23	
	5-2	Lifting speed, with / without load	m/s	0.26	0.30	
	5-3	Lowering speed, with / without load	m/s	0.50	0.50	
	5-5	Drawbar pull - 1 mph (1.6 km/h), with /without load	kN	248	248	
	5-5-1	Drawbar pull - stall, with / without load	kN	275	275	
	5-7	Gradeability - 1 mph (1.6 km/h), with / without load (6)	%	24	38	
5-7-1	Gradeability - stall, with / without load (6)	%	34	46		

			TIER 3 / STAGE III		TIER 4 / STAGE V		
GENERAL	1-1	Manufacturer	HYSTER		HYSTER		
	1-2	Model designation	H40-H52XD-CH		H40-52XD-CH		
	1-3	Powertrain / drivetrain	Diesel		Diesel		
ENGINE	7-1	Engine Manufacturer / model	Cummins / X12		Cummins / X12		
	7-1a	EPA / CE Compliance	Tier 3 / Stage III		Tier 4 / Stage V		
	7-2	Engine power output - rated	kW	250@2,100		265@2,000	
	7-2-1	Engine power output - peak	kW	276@1,800		283@1,700	
	7-3-1	Engine torque @ rpm (1/min)	N-m	1,674@1500		1,862@ 1,400	
	7-4	Number of cylinders / displacement	# / cm3	6 / 11,800		6 / 11,800	
	x	Turbocharger	Type	Wastegate, water-cooled		Wastegate, water-cooled	
	7-8	Alternator output	Amps	110		120	
	7-9	Electrical system voltage	Volts	24		24	
	7-10	Battery voltage, rated capacity	V /Ah	24 / 102		24 / 102	
DRIVE	8-0	Drive control / transmission	Type	Powershift Transmission		Powershift Transmission	
	8-1	Type of drive unit	Type	Torque Converter		Torque Converter	
	8-2	Transmission manufacturer / type	Type	Dana Spicer Off-Highway TE-30		Dana Spicer Off-Highway TE-30	
	8-2-1	Transmission speeds forward / backward	#	5 / 3		5 / 3	
	8-3	Wheel drive / drive axle manufacturer / type	Type	Kessler D102		Kessler D102	
	8-4	Service brake	Type	Oil immersed (wet) disc		Oil immersed (wet) disc	
8-5	Parking brake	Type	Spring apply, dry disc on drive axle		Spring apply, dry disc on drive axle		
SPREADER	9-1	Spreader manufacturer /type	Type	ELME / 813 Dedicated Top Lift	ELME / 818 Gantry Top Lift	ELME / 818 Dedicated Top Lift	ELME / 818 Gantry Top Lift
	9-2	Pile slope type	Type	MPS	MPS / PPS	MPS	MPS/PPS
	9-3	Size of containers	ft	ISO 20' - 40'		ISO 20' - 40'	
	9-4	Side shift	mm	+/- 216	+/- 400	+/- 216	+/- 400
	9-5	Pile slope spreader	degrees	+/- 2.5	+/- 6.0	+/- 2.5	+/- 6.0
	9-6	Rotation angle	degrees	+/- 4.5	+/- 3.0	+/- 4.5	+/- 3.0
	9-7	Longitudinal adjustment	mm	+/- 210	+/- 240	+/- 210	+/- 540
	9-8	Telescoping time, extend / retract	seconds	12 / 12		12 / 12	
MISC	10-1	Operating pressure for attachments	bar	140		140	
	10-2	Oil volume for attachments	l/min	90		90	
	10-3	Hydraulic oil tank capacity, H40 / H52	l	625		625	
	10-4	Fuel tank capacity	l	855		855	
	10-4-1	DEF tank capacity	l	N/A		92	
	10-5	Steering design	Type	Hydrostatic		Hydrostatic	
	10-6	Number of steering rotation	#	6.0		6.0	
	10-7	Sound pressure level at driver's seat LwAZ	dB (A)	74		74	
10-7-1	Sound pressure level at driver's seat LwAZ	dB	109		109		

NOTES:

Specifications are affected by the condition of the vehicle and how it is equipped, as well as the nature and condition of the operating area. Inform your dealer of the nature and condition of the intended operating area when purchasing your Hyster® truck.

- (1) Center of drive axle to front face of spreader.
- (2) Based on complete truck with cab, pneumatic tires, mast as specified and standard spreader.
- (3) Unladen with new tires
- (4) Distance from ground to twistlocks
- (5) Full suspension seat in depressed position
- (6) Gradeability figures are provided for comparison of tractive performance but are not intended to endorse the operation of the vehicle on the stated inclines.

NOTICE:

Care must be exercised when handling elevated loads. Operators must be trained and must read, understand and follow the instructions contained in the Operating Manual. All values are nominal values and they are subject to tolerances. For further information, please contact the manufacturer. Hyster products are subject to change without notice. Lift trucks illustrated may feature optional equipment. Values may vary with alternative configurations.

CERTIFICATION: Hyster lift trucks meet the design and construction requirements of B56.1-1969, per OSHA Section 1910.178(a)(2), and also comply with the B56.1 revision in effect at time of manufacture. Certification of compliance with the applicable ANSI standards appears on the lift truck. Performance specifications are for a truck equipped as described under Standard Equipment on this Technical Guide. Performance specifications are affected by the condition of the vehicle and how it is equipped, as well as by the nature, condition of the operating area, proper service and maintenance of the vehicle. If these specifications are critical, the proposed application should be discussed with your dealer.

NOTE: Specifications, unless otherwise listed, are for a standard truck without optional equipment.

Specification data is based on VDI 2198.

CAPACITY CHARTS

ALL TIRES	H52XD-CH 5-High Mast		H52XD-CH 6-High Mast (6° fwd / 8° rwd Mast Tilt Required)			
	1st - 5th Container		6th Container			
	MPS / PPS		MPS		PPS	
	Retracted / Extended	Retracted / Extended	Retracted	Extended	Retracted	Extended
	kg	kg	kg	kg	kg	kg
	40,000	40,000	37,290	37,290	36,290	36,290

ALL TIRES	H40XD-CH 4-High Mast		H40XD-CH 5-High Mast			
	1st - 4th Container		5th Container			
	MPS / PPS		MPS		PPS	
	Retracted / Extended	Retracted / Extended	Retracted	Extended	Retracted	Extended
	kg	kg	kg	kg	kg	kg
	41,000	41,000	41,000	37,500	40,000	36,500



PERFORMANCE	STD	OPT
Cummins X12 diesel engine rated 355 hp tier 4 / 265 kw Stage V	x	
Cummins X12 diesel engine rated 335 hp tier 3 / 250 kw Stage IIIA*	x	
Wastegate turbocharger, water cooled	x	
Hibernate idle	x	
On-demand cooling fan	x	
120 Amp alternator	x	
Performance modes selectable in integrated performance display	x	
Heavy duty air intake	x	
Spicer off-highway TE-30 5-speed auto-shifting transmission	x	
Kessler D102 drive axle with wet disc brakes	x	
Kessler D102 extra wide drive axle with wet disc brakes (mandatory for 6-high)		x
DRIVE	STD	OPT
Travel speed limiter - unconditional and customer adjustable		x
Travel speed limiter - loaded - based on container position, mast tilt and spreader slewing		x
18.00-25 40PR Pneumatic bias ply drive and steer tires	x	
18.00-33 36PR Pneumatic bias ply drive and steer tires		x
18.00-R25 Michelin XZM2 plus pneumatic radial drive and steer tires		x
18.00-R25 Goodyear slick radial drive and steer tires		x
18.00-R36 Michelin XZM pneumatic radial drive and steer tires		x
LIFT	STD	OPT
Hydraulic system with triple gear pump	x	
On-demand load sensing hydraulic system	x	
Automatic throttle-up when lifting (in neutral or inching)	x	
2-Stage non free lift mast for 3-high stacking		x
2-Stage non free lift mast for 4-high stacking		x
2-Stage non free lift mast for 5-high stacking	x	
2-Stage non free lift mast for 6-high stacking		x
Mast tilt - 6° forward / 8° back	x	
Mast tilt - 6° forward / 10° back		x

LIFT (CONTINUED)	STD	OPT
Hydraulic accumulator	x	
Hydraulic system temperature protection with performance de-rate		x
HANDLING	STD	OPT
Canbus spreader, Hyster model 818 with gantry carriage	x	
Canbus spreader controls	x	
Mechanical pile slope	x	
Powered pile slope		x
Wide twistlock position (WTP) container handling spreader		x
4 Lifting eyes located on end beam corners	x	
4 Lifting eyes located under center beam of spreader		x
Spreader guides located 19.9" (506mm) inwards from center of spreader end beam		x
Automatic one-touch extend/retract (20'/40') for spreader		x
Mast tilt indicator - mechanical		x
Stops for 30' containers		x
Stops for 20-40' containers		x
Overlowering protection	x	
Additional overlowering protection (interrupts lowering if twistlocks are not seated.)		x
ERGONOMICS	STD	OPT
Enclosed operator cabin	x	
Auto tip-up cabin 10°		x
Isolated cabin mounting for low noise and vibration	x	
Mechanical suspension seat	x	
Air suspension seat		x
Deluxe air suspension seat		x
Low backrest seat	x	
High backrest seat		x
Armrest on left side	x	
Cloth seat cover	x	
Vinyl seat cover		x
Seat heating		x
Seat ventilation		x

FEATURES AND OPTIONS

ERGONOMICS (CONTINUED)	STD	OPT
2-point high visibility seatbelt	x	
3-point high visibility seatbelt		x
Lateral seat sliding mechanism		x
Floor mat	x	
Interior dome light	x	
Front, top and rear wipers	x	
"H"-pattern front wiper		x
"I"-pattern front wiper	x	
Intermittent wipers	x	
Front and rear window defrosters	x	
Tinted operator compartment windows (top, rear and door)		x
Tinted operator compartment top window		x
Left side handrails, stairway and cabin door	x	
Right side door	x	
Right side handrails and stairway		x
Wire mesh installed on top of operator compartment		x
7" Integrated performance display	x	
Joystick hydraulic control integrated in control arm	x	
Steering wheel with spinner knob	x	
Directional control on joystick		x
Park brake - push button applied	x	
Park brake - automatically applied		x
Interior wide angle mirrors	x	
Heater with adjustable speed fan	x	
Telescoping & tilting steering column	x	
USB outlet inside armrest	x	
24-12-volt DC converter with 1 socket and 2 USB outlets	x	
24-12-volt DC converter with 2 sockets and 2 USB outlets		x
Air conditioning		x
Automatic climate control		x
Reading light		x
Sun shades on top and rear		x

ERGONOMICS (CONTINUED)	STD	OPT
Sun visors front window		x
Cloth trainer seat with 2-point seatbelt		x
Recirculation fan	x	
Accessory mounting bracket on cab front right pillar		x
Document holder on cab front right pillar		x
Heated top window		x
Radio preparation with 2 speakers and antenna		x
VISIBILITY	STD	OPT
Top window with armoured glass	x	
Steel bars under armored glass top window		x
External wide angle mirrors mounted on rear of front fenders	x	
Exterior mirrors mounted to handrails		x
Rear view camera system		x
Radar object detection system		x
Halogen work lights	x	
High performance led work lights		x
Four halogen head lights mounted on front fenders	x	
Four led head lights mounted on front fenders		x
Four cabin mounted work lights		x
Two rearward work lights mounted on the cabin	x	
Led stop/tail/brake lights	x	
Turn signals, hazard & marker lights (LED)	x	
One engine compartment light*	x	
OPERATION	STD	OPT
Air horn 112 DBA	x	
Visible alarm – amber strobe light, ignition activated	x	
Audible alarm – reverse direction activated	x	
Forward motion alarm		x
Seatbelt interlock on sequence for engine start and truck operation	x	
Green seatbelt indicator light on top of operator cabin		x
Hydraulic load weighing system		x
Tire pressure monitoring system	x	

FEATURES AND OPTIONS

OPERATION (CONTINUED)	STD	OPT
Air conditioning shut-off with open door		x
Automatic engine shutdown with timer		x
Delayed engine shutdown for turbo cool down		x
Lockable battery disconnect switch	x	
Battery jump start connector (nato plug)		x
Truck start with key switch and start button	x	
Operator password (display) for truck start	x	
Fuses below 30 amps replaced by electric circuit breakers		x
Non-lockable fuel cap	x	
Lockable fuel cap		x
Fuel strainer in fuel filler neck		x
Hyster Tracker™ wireless asset management - access / verification		x
Hyster Tracker™ wireless asset management - monitoring	x	
Auto greasing system for spreader		x
Auto greasing system for base truck		x

OPERATION (CONTINUED)	STD	OPT
Centralized greasing provision for upper chain sheaves		x
24-volt electrical system	x	
Engine block heater 110 or 240-volt		x
Second hour meter reader near fuel tank		x
Steer wheel lug nut protection	x	
APPEARANCE	STD	OPT
Hyster yellow paint base truck	x	
Special paint base truck		x
Hazard warning striping on counterweight		x
SUPPLEMENTAL	STD	OPT
Literature package	x	
Operator's manual	x	
CE certification		x
Warranty: 12 months / 2,000 hours parts manufacturer's warranty*	x	

*Standard or optional in selected markets. Other options available through Special Products Engineering Department (SPED). Contact Hyster for details.

HYSTER® DEALERS



Contact your nearest Hyster® Dealership
by visiting www.hyster.com




Hyster Pacific

1/23 Rowood Road, Prospect NSW 2148
Tel: +61 (2) 9795 3800 Fax: +61 (2) 9792 8484

Hyster Asia

16 Tuas Avenue 20, Singapore 638827
Tel: +65 6863 3387 Fax: +65 6863 3349

Visit us online at www.hyster.com

© Hyster Asia Pacific 2023. All rights reserved. HYSTER, , and Strong Partners. Tough Trucks are trademarks of Hyster-Yale Group, Inc. Specifications and details in this brochure are subject to change without prior notification. Please consult with your Hyster dealer for the most up to date information and to confirm exact capacities.