

TIRE HANDLER SERIES



**STRONG PARTNERS.
TOUGH TRUCKS.™**

PRODUCT SELECTOR GUIDE
Heavy Duty Tire Handler Trucks with IMT Attachments



TIRE HANDLER SERIES

TOUGH TRUCKS FOR TIRE HANDLING APPLICATIONS

Hyster® tire handler trucks are engineered to meet the most demanding tire handling applications in the mining, ports and intermodal market segments. Featuring a “plug-and-play” system, Hyster tire handlers feature easy on-site installation and assembly. All trucks are designed for excellent all-around visibility of tire grab pads, fallback arms and wheel assemblies while providing excellent rearward visibility.

In close association with Iowa Mold & Tooling Company (IMT), 8 dedicated tire handler models are available from 5,000 lbs. through 36,000 lbs.* of handling capacity. Another 6 models are available for dual use as tire handlers or forklift trucks featuring hang-on quick connect attachments. Optimized flow settings with fully calibrated hydraulics improve tire handler performance. Counterweights are optimized to deliver required lift capacities.

* 36,000 lbs. of tire handling capacity available in dedicated tire handler configuration only. Not available in hang-on quick connect configuration.





HOW TO SELECT A TIRE HANDLER

THE FOLLOWING STEPS SHOULD BE FOLLOWED TO ENSURE THE SELECTION OF A TIRE HANDLER THAT IS OPTIMAL FOR YOUR APPLICATION:



1. Identify the largest/heaviest tires in your fleet
2. Determine tire size(s) for largest trucks
3. Identify the tire size in this Tire Handler Product Selector Guide
 - a. Consider tire dimensions and rim weights
 - b. Determine total wheel weights with/without chains
4. Select the attachment with sufficient handling capacity
5. Verify that the attachment provides all handling functions desired:
 - a. Body rotation
 - b. Grab pad rotation
 - c. Clamp/Unclamp
 - d. Sideshift
 - e. Fallback protection
6. Select the truck with sufficient rated tire handling capacity for the attachment
7. Consult this Tire Handler Product Selector Guide to ensure correct equipment selection
8. Ensure that the tire handler will handle the full range of tires required (minimum/maximum diameter)

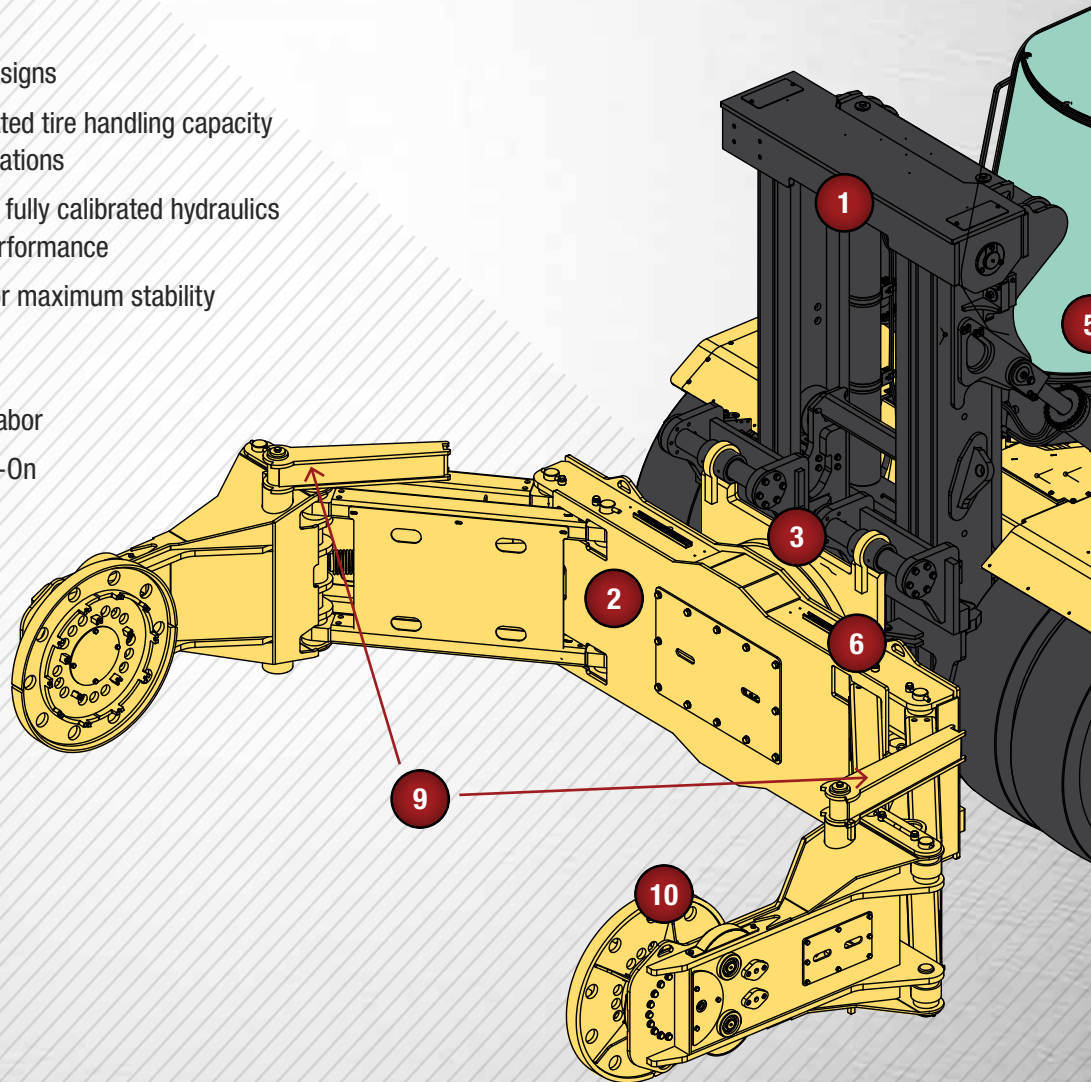
THE FOLLOWING INDUSTRY SEGMENT AND SITE SPECIFIC ELEMENTS ALSO NEED TO BE CONSIDERED:

1. Dedicated use (requiring Integral) or flex use (requiring Hang-On Quick Connect) operation
2. Clearance around wheels and proximity to fuel and hydraulic tanks
3. Terrain at application site
4. Truck size and maneuverability
5. Overall tire handling truck width clearances
6. Overall lift and stacking height requirements
7. Maintenance and service support requirements

STANDARD FEATURES AND OPTIONS

HYSTER® TRUCKS WITH ENGINEERED ATTACHMENTS FROM IOWA MOLD & TOOLING COMPANY (IMT).

- “Plug-and-play” – easy to install and assemble
- Streamlined order processing means shorter build, assembly and delivery times
-  and  Certification on both the truck and tire handler attachment
 - Engineered for reliability, an on/off unclamp inhibit switch is standard on all Hyster® tire handler trucks
 - Compliant with Mine Safety and Health Association (MSHA) regulations
- Designed for excellent visibility
- Optimized truck and tire handler designs
 - Reduced lost load and full rated tire handling capacity on truck/attachment combinations
 - Optimized flow settings with fully calibrated hydraulics for enhanced tire handler performance
 - Optimized counterweights for maximum stability load factors
- Industry leading warranty*:
12 months/2000 hours + parts + labor
- Available in both Integral and Hang-On Quick Connect Models
- Industry leading total cost of ownership solution for tire handling mine operation

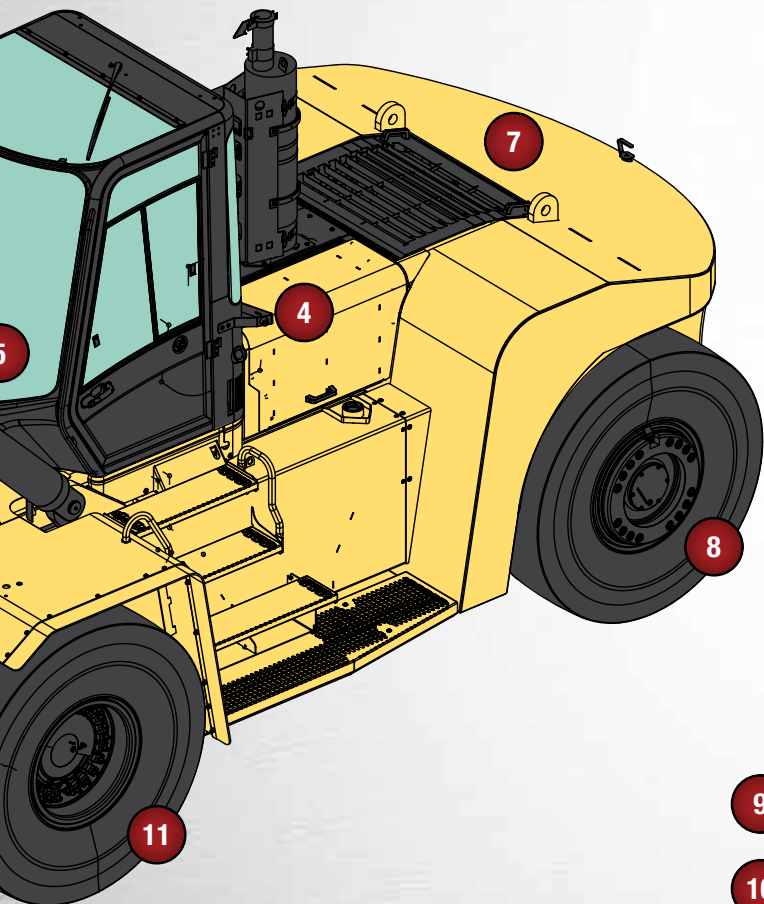


* Consult Hyster Company for truck warranty details. Consult Iowa Mold & Tooling Co. for attachment warranty details.

STANDARD FEATURES AND OPTIONS

■ HYSTER® TIRE HANDLER: THE MOST VERSATILE SOLUTION ON THE MARKET

- 1 2-stage mast offers excellent visibility and easy viewing of handling application.
- 2 Tire handler attachment designed for seamless body rotation and clear sightlines throughout most of the handling operation.
- 3 Integral mounted attachments for maximum handling capacity and minimum lost load, or hang-on attachment options available for flexibility and versatility at rated capacity.



- 4 Designed for ease of on-site assembly and serviceability.
- 5 7 function hydraulic control with up to 5 auxiliary functions optimized for tire handling.
- 6 Designed with proportional controls for primary functions enabling high controllability.
- 7 Standardized attachment mounting with optimized counterweight.
- 8 Designed for excellent maneuverability with minimized turning radius.
- 9 Hydraulically actuated fallback protection arms
- 10 Grab pads with up to 100 degrees rotation enables easy handling of tires, rims and wheels.
- 11 Optional solid tires available upon request.

TIRE INFORMATION											IMT TH MODEL	FORKLIFT MODEL	
Tire Size	Outside Diameter	Outside Diameter	Typical Tire Weight	Typical Tire Weight	Typical Rim Weight	Typical Rim Weight	Typical Chain Weights	Typical Chain Weights	Total Weight	Total Weight	MOUNTING STYLE: INTEGRAL Solely dedicated truck for the Tire Handling Application		
	in	mm	lbs	kg	lbs	kg	lbs	kg	lbs	kg			
12.00R24	49.4	1255	210	95	168	76	650	295	1028	466	TH5K115	H155FT*	
12.00R24RL-4J	50.3	1278	335	152	168	76	650	295	1153	523			
14.00R24	55.1	1400	420	191	163	74	705	320	1288	585	TH5K115	H155FT*	
14.00R24RL-4J	55.6	1412	490	222	163	74	705	320	1358	616			
14.00R24	54.9	1394	511	232	163	74	705	320	1379	626			
30/65R25 RL-2+	64.1	1628	893	405	516	234	705	320	2114	959	TH5K115	H155FT*	
14.00R25 RL-4F	55.6	1412	435	197	267	121	705	320	1407	638			
14.00R25	55.2	1402	420	191	267	121	705	320	1392	632			
15.5R 25 X MINE-D2	52.6	1336	494	224	159	72	584	265	1236	561	TH5K115	H155FT*	
16.00-25	60.9	1547	570	259	304	138	451	205	1325	602	TH5K115	H155FT*	
16.00-25HRL-4B	59.9	1521	587	266	304	138	451	205	1342	609			
16.00R25 XHD1 A	59.8	1519	606	275	304	138	451	205	1362	618			
17.5R25	52.8	1341	350	159	340	154	518	235	1208	548	TH5K115	H155FT*	
17.5R25	54.9	1394	457	297	340	154	518	235	1314	686			
17.5R25RL-2+	54.3	1379	368	167	340	154	518	235	1226	556			
18.00-25	64.5	1638	830	376	362	164	1627	738	2819	1278	TH5K115	H155FT*	
18.00-25 ELV-4B	65.8	1671	834	378	362	164	1627	738	2823	1280			
18.00R25 XHD1A	65.7	1669	844	383	362	164	1627	738	2833	1285			
21.00R25	68.0	1727	750	340	408	185	828	376	1986	901	TH5K115	H155FT*	
21.00-25 EAW-7A	69.5	1765	922	418	408	185	828	376	2158	979			
21.00R25	69.6	1768	1043	473	408	185	828	376	2278	1034			
21.00R35	80.6	2047	1400	635	644	292	828	376	2872	1303			
21.00R35 RL-4J	80.9	2055	1440	653	644	292	828	376	2912	1321			
21.00R35	80.6	2047	1442	654	644	292	828	376	2914	1322			
23.5R25	64.3	1633	850	386	423	192	1862	845	3135	1423	TH5K115	H155FT*	
23.5R25	65.2	1656	1086	493	423	192	1862	845	3371	1530			
23.5-25 HRL D/L-5A	66.4	1687	1201	545	423	192	1862	845	3486	1582	TH5K115	H155FT*	
24.00R35	86.4	2195	1900	862	712	323	593	269	3205	1454			
24.00R35 RL-3+	84.0	2134	1860	844	712	323	593	269	3165	1436			
24.00R35	84.9	2156	1858	843	712	323	593	269	3163	1435	TH5K115	H155FT*	
26.5R25	68.3	1735	1010	458	492	223	2460	1116	3962	1797			
26.5-25 HRL D/L-4A	70.6	1793	1326	601	492	223	2460	1116	4278	1940			
26.5R25 X MINE-D2	70.6	1793	1517	688	492	223	2460	1116	4468	2027	TH5K115	H155FT*	
29.5-25	74.0	1880	1150	522	536	243	2566	1164	4252	1929			
29.5-25 HRL D/L-4A	74.4	1890	1659	753	536	243	2566	1164	4761	2160			
29.5R25 X MINE-D2	74.8	1900	1878	609	536	243	2566	1164	4979	2016	TH5K115	H155FT*	
26.5R29 XSMD1	71.9	1826	1840	835	640	292	1701	772	4181	1899			
29.5-29	77.8	1976	1290	585	644	292	2658	1206	4592	2083			
29.5R29	78.0	1981	1887	856	644	292	2658	1206	5189	2354	TH5K115	H155FT*	
18.00R33	74.4	1890	1080	490	498	226	1410	640	2988	1356			
18.00R33 RL-4J	73.7	1872	1075	488	498	226	1410	640	2983	1354			
18.00R33	73.7	1872	1034	469	498	226	1410	640	2942	1335	TH5K115	H155FT*	

Chain weights are based on Pewag production chains for tire sizes shown. Contact Pewag Chains for order details.

Tire, wheel rim and chain sizes and weights are based on OEM specifications for tires currently in production as of February 2014.

* H155FT - TH5K115 available via SPED. Contact your dealer for details.

HAULER TIRES

INTEGRAL ATTACHMENT MOUNTING

TIRE INFORMATION											IMT TH MODEL	FORKLIFT MODEL
Tire Size	Outside Diameter	Outside Diameter	Typical Tire Weight	Typical Tire Weight	Typical Rim Weight	Typical Rim Weight	Typical Chain Weights	Typical Chain Weights	Total Weight	Total Weight	MOUNTING STYLE: INTEGRAL Solely dedicated truck for the Tire Handling Application	
	in	mm	lbs	kg	lbs	kg	lbs	kg	lbs	kg		
21.00-35	80.3	2040	1350	612	644	292	828	376	2822	1280	TH5K115	H155FT*
21.00-35 MRL-4B	80.1	2035	1500	680	644	292	828	376	2972	1348		
21.00R35	80.6	2047	1442	654	644	292	828	376	2914	1322		
24.00R35	86.4	2195	1900	862	712	323	593	269	3205	1454	TH10K135	H330HD ₂ **
24.00R35 RL-4J	86.4	2195	1830	830	712	323	593	269	3135	1422		
24.00R35	84.9	2156	1858	843	712	323	593	269	3163	1435		
29.5R35	83.5	2121	1580	717	720	488	835	379	3135	1584	TH10K135	H330HD ₂ **
29.5-35 HRL-3B	83.3	2116	1478	670	720	488	835	379	3033	1537		
29.5-35	83.2	2113	1481	672	720	488	835	379	3036	1539		
21.00-49 HRL-4B	94.5	2400	1764	800	1076	488	835	379	3675	1667	TH10K135	H330HD ₂ **
24.00R49	99.6	2530	2320	1052	1078	489	835	379	4233	1920	TH10K135	H330HD ₂ **
24.00R49 RL-4	98.8	2510	2390	1084	1078	489	835	379	4303	1952		
24.00R49	98.9	2512	2191	994	1078	489	835	379	4104	1862		
27.00R49	106.6	2708	3150	1429	1241	563	981	445	5372	2437	TH10K135	H330HD ₂ **
27.00R49 RL-4J	106.3	2700	3015	1368	1241	563	981	445	5237	2376		
27.00R49	106.1	2695	3054	1385	1241	563	981	445	5277	2393		
30.00-51	114.3	2903	3590	1628	1975	896	2341	1062	7906	3586	TH10K135	H330HD ₂ **
30.00R51 RL-4H	115.6	2936	4560	2068	1975	896	2341	1062	8876	4026		
30.00R51	113.8	2891	3929	1782	1975	896	2341	1062	8245	3740		
33.00R51	120.6	3063	4940	2241	2123	963	2738	1242	9801	4446	TH10K135	H330HD ₂ **
33.00-51 HRL-4B	120.2	3053	4560	2068	2123	963	2738	1242	9421	4273		
33.00R51	119.5	3035	4869	2208	2123	963	2738	1242	9730	4413		
36.00R51	126.1	3203	5680	2576	2286	1037	1873	850	9839	4463	TH10K135	H330HD ₂ **
36.00-51HRL-4B	127.8	3246	6120	2776	2286	1037	1873	850	10279	4663		
36.00R51	126.5	3213	6101	2767	2286	1037	1873	850	10260	4654		
35/65-33	80.7	2050	2779	1260	723	328	2998	1360	6500	2948	TH10K135	H330HD ₂ **
37.00R57	134.7	3421	6690	3035	2758	1251	3359	1524	12807	5810	TH15K160	H360-48HD
37.00R57 RL-4H	135.5	3442	6750	3062	2758	1251	3359	1524	12867	5837		
37.00-57	136.1	3457	7106	3223	2758	1251	3359	1524	13223	5998		
40.00R57	140.7	3574	8490	3851	2800	1270	7687	3487	18977	8608	TH20K167	H450HDS
46/90R57	140.7	3574	8800	3992	2800	1270	5879	2667	17479	7929	TH25K164 or TH25K164L	H550HDS
50/90R57	150.6	3825	10320	4681	3609	1637	11878	5388	25807	11706		
50/90R57	150.0	3810	10113	4587	3609	1637	11878	5388	25600	11612		
55/80R63	154.0	3912	11200	5080	6235	2828	11878	5388	29313	13296	TH36K164	H700HDS
55/80R63	147.6	3749	10177	4616	6235	2828	11878	5388	28290	12832	TH36K164L	H620HD***
59/80R63	158.5	4026	11200	5080	6453	2927	11878	5388	29531	13395		
59/80R63	158.5	4026	11735	5323	6453	2927	11878	5388	30066	13638		

Chain weights are based on Pewag production chains for tire sizes shown. Contact Pewag Chains for order details.

Tire, wheel rim and chain sizes and weights are based on OEM specifications for tires currently in production as of February 2014.

* H155FT - TH5K115 available via SPED. Contact your dealer for details.

**H360HD₂ can also be ordered in lieu of H330HD₂ via SPED. Contact Hyster Company for details.

***H700HDS can also be ordered in lieu of H620HD via SPED. Contact Hyster Company for details.

LOADER AND SCRAPER TIRES

INTEGRAL ATTACHMENT MOUNTING

TIRE INFORMATION											IMT TH MODEL	FORKLIFT MODEL	
Tire Size	Outside Diameter	Outside Diameter	Typical Tire Weight	Typical Tire Weight	Typical Rim Weight	Typical Rim Weight	Typical Chain Weights	Typical Chain Weights	Total Weight	Total Weight	MOUNTING STYLE: INTEGRAL Solely dedicated truck for the Tire Handling Application		
	in	mm	lbs	kg	lbs	kg	lbs	kg	lbs	kg			
14.00-24	53.3	1354	530	181	163	74	705	320	1398	575	TH5K115	H155FT*	
14.00-24 SMO-5B	55.6	1412	612	278	163	74	705	320	1480	672			
15.5R25	50.2	1275	270	122	159	72	584	265	1013	459	TH5K115	H155FT*	
15.5R 25 XTL A *	50	1270	250	113	159	72	584	265	993	450			
16.00-25	60.5	1537	780	354	304	138	584	265	1668	757	TH5K115	H155FT*	
16.00-25AMS-4/5A	59.9	1521	705	320	304	138	584	265	1593	723			
16.00R25	60.2	1529	639	290	304	138	584	265	1528	693			
17.5-25	54.5	1384	610	277	340	154	518	235	1468	666	TH5K115	H155FT*	
17.5-25 AMS D/L-5	55.1	1400	729	331	340	154	518	235	1587	720			
17.5R25	55.4	1407	655	297	340	154	518	235	1512	686	TH5K115	H155FT*	
18.00-25	65.9	1674	1300	590	362	164	1627	738	3289	1492			
18.00-25 SMO-5B	65.6	1666	1146	520	362	164	1627	738	3135	1422			
18.00R25	65.1	1654	1136	515	362	164	1627	738	3125	1417	TH5K115	H155FT*	
20.5-25	61.3	1557	920	417	364	165	1514	687	2798	1269			
20.5R25 X MINE-D2	60.2	1529	879	399	364	165	1514	687	2757	1251	TH5K115	H155FT*	
20.5-25 RL-5K*	60.4	1534	840	381	364	165	1514	687	2718	1233			
21.00-25	70.8	1798	1520	689	408	185	1862	845	3790	1719	TH5K115	H155FT*	
21.00R25	68.9	1750	1097	498	408	185	1862	845	3367	1528			
23.5R25	65.8	1671	1170	531	423	192	1862	845	3455	1568	TH5K115	H155FT*	
23.5R25	65.4	1661	1086	493	423	192	1862	845	3371	1530			
23.5-25 HRL D/L-5A	66.4	1687	1201	545	423	192	1862	845	3486	1582	TH5K115	H155FT*	
26.5-25	70.8	1798	1910	866	492	223	2460	1116	4862	2205			
26.5-25 AMS D/L-5	71	1803	1679	762	492	223	2460	1116	4631	2101	TH5K115	H155FT*	
26.5R25	70.9	1801	1795	814	492	223	2460	1116	4746	2153			
29.5-25	75.6	1920	1860	844	536	243	2566	1164	4962	2251	TH5K115	H155FT*	
29.5R25	78.5	1994	1690	766	536	243	2566	1164	4791	2173			
29.5R25 RL-5K	75.6	1920	2160	980	536	243	2566	1164	5262	2387	TH5K115	H155FT*	
26.5R29 GP-3	73.1	1857	1200	544	650	161	1701	772	3551	1477			
26.5R29	72.4	1839	1243	564	650	161	1701	772	3594	1497	TH5K115	H155FT*	
29.5R29	79.1	2009	2390	1084	644	292	2658	1206	5692	2582			
29.5-29AMS D/L-5	78.8	2002	2526	1146	644	292	2658	1206	5828	2644	TH5K115	H155FT*	
29.5 R29 XLD D2 A	78.9	2004	1819	825	644	292	2658	1206	5120	2323			
33.25R29	82	2083	2380	1080	650	385	2017	915	5047	2380	TH5K115	H155FT*	
33.25R29RL 2F	82.2	2088	1740	789	650	385	2017	915	4407	2089			
33.25-29	81.7	2075	1925	873	650	385	2017	915	4592	2173	TH5K115	H155FT*	
30/65-29NRL D/L-5A	71.3	1811	1715	777	650	385	2017	915	4382	2077			
30/65R-29	70.2	1783	1505	683	650	385	2017	915	4172	1983	TH10K135	H330HD ₂ **	
33.5-33	88.8	2256	1930	875	849	385	2998	1360	5777	2620			
33.5-33HRL D/L-4A	87.7	2228	2988	1355	849	385	2998	1360	6835	3100	TH10K135	H330HD ₂ **	
33.5-33	87.7	2228	2064	936	849	385	2998	1360	5910	2681			
37.5-33HRL D/L-3A	93.3	2370	2754	1249	850	328	2998	1360	6602	2937	TH10K135	H330HD ₂ **	
35/65-33	81.7	2075	3300	1497	723	328	2998	1360	7021	3185			
35/65-33	80.9	2055	2779	1260	723	328	2998	1360	6500	2948	TH10K135	H330HD ₂ **	
29.5R 35 XTS TL	83.5	2121	1481	672	900	328	2998	1360	5379	2360			
33.25-35	90.4	2296	3210	1456	900	328	2998	1360	7108	3144	TH10K135	H330HD ₂ **	
33.25-35 SMO D/L -5B	91.1	2314	3430	1556	900	328	2998	1360	7328	3244			
33.25-35	87.5	2223	2989	1356	900	328	2998	1360	6887	3044			

Chain weights are based on Pewag production chains for tire sizes shown. Contact Pewag Chains for order details.

Tire, wheel rim and chain sizes and weights are based on OEM specifications for tires currently in production as of February 2014.

* H155FT - TH5K115 available via SPED. Contact Hyster Company for details.

**H330HD₂ can also be ordered in lieu of H330HD₂ via SPED. Contact Hyster Company for details.

LOADER AND SCRAPER TIRES

INTEGRAL ATTACHMENT MOUNTING

TIRE INFORMATION											IMT TH MODEL	FORKLIFT MODEL
Tire Size	Outside Diameter	Outside Diameter	Typical Tire Weight	Typical Tire Weight	Typical Rim Weight	Typical Rim Weight	Typical Chain Weights	Typical Chain Weights	Total Weight	Total Weight	MOUNTING STYLE: INTEGRAL Solely dedicated truck for the Tire Handling Application	
	in	mm	lbs	kg	lbs	kg	lbs	kg	lbs	kg		
37.25-35 HRL D/L-5A	95	2413	4122	1870	900	552	4717	2140	9739	4562	TH10K135	H330HD ₂ **
37.25R35	93.1	2365	3929	1782	900	552	4717	2140	9546	4474		
37.5-39 HRL D/L-5A	100.8	2560	4614	2093	1300	552	4717	2140	10631	4785	TH10K135	H330HD ₂ **
37.5-39	99.4	2525	3871	1756	1300	552	4717	2140	9888	4448		
41.25/70-39	98.8	2510	4600	2087	1217	552	4717	2140	10534	4779	TH10K135	H330HD ₂ **
41.25/70-39 NRL D/L-5A	98.4	2499	4675	2121	1217	552	4717	2140	10609	4813		
40/65-39	95.3	2421	4130	1873	1239	562	5242	2378	10611	4813	TH10K135	H330HD ₂ **
40/65-39 NRL D/L-5A	94.4	2398	3855	1749	1239	562	5242	2378	10336	4689		
40/65R39	93.8	2383	3443	1562	1239	562	5242	2378	9924	4502		
40.5/75R39 RL-4K	101.4	2576	3668	1664	1300	562	6657	3020	11625	5246	TH10K135	H330HD ₂ **
40.5/75R39	101.9	2588	3221	1461	1300	562	6657	3020	11178	5043		
45/65-45	107.5	2731	6610	2998	1625	737	6657	3020	14892	6755	TH15K160	H360-48HD
45/65-45 ND L D/L-5/15C	107.6	2733	5920	2685	1625	737	6657	3020	14202	6442		
45/65R45	107.8	2738	5929	2689	1625	737	6657	3020	14211	6446		
50/65-51	120.9	3071	8010	3633	2443	1108	8247	3741	18700	8482	TH20K167	H450HDS
50/65-51 NRL D/L-5A	120.5	3061	7981	3620	2443	1108	8247	3741	18671	8469		
49.5/85-57	155.6	3952	11830	5366	3393	1539	9197	4172	24420	11077	TH25K164 or TH25K164L	H550HDS
50/80-57	143.9	3655	9450	4286	3393	1539	9986	4530	22829	10355		
50/80-57 68HRL D/L 4G	140.9	3579	9328	4157	3393	1539	9986	4530	22707	10226		
52/80-57 68 HRL D/L 4G	140.9	3579	10480	4754	3500	1837	9859	4472	23839	11063		
53.5/85-57	155.6	3952	13050	5919	3500	1837	11448	5193	27998	12949	TH36K164	H700HDS
55/80R57	146.9	3731	11962	5426	4050	1837	10716	4861	26728	12124		
55/80R63	154	3912	11200	5080	6235	2828	11878	5388	29313	13296		
58/85-57	155.9	3960	12810	5811	4120	1869	11858	5379	28788	13059	TH36K164L	H620HD***
60/80R57	155.5	3949	14013	6356	4081	1851	12206	5537	30300	13744		
65/65-57	147	3734	16500	7484	4513	2047	12101	5489	33114	15020		
70/70-57	158	4013	14740	6686	4500	2047	13549	6146	32789	14879		

Chain weights are based on Pewag production chains for tire sizes shown. Contact Pewag Chains for order details.

Tire, wheel rim and chain sizes and weights are based on OEM specifications for tires currently in production as of February 2014.

**H360HD₂ can also be ordered in lieu of H330HD₂ via SPED. Contact Hyster Company for details.

***H700HDS can also be ordered in lieu of H620HD via SPED. Contact Hyster Company for details.

TIRE INFORMATION											IMT TH MODEL	FORKLIFT MODEL
Tire Size	Outside Diameter	Outside Diameter	Typical Tire Weight	Typical Tire Weight	Typical Rim Weight	Typical Rim Weight	Typical Chain Weights	Typical Chain Weights	Total Weight	Total Weight	MOUNTING STYLE: HANG-ON Dual use equipment providing both tire handling & flexibility for use as a forklift truck	
	in	mm	lbs	kg	lbs	kg	lbs	kg	lbs	kg		
12.00R24	49.4	1255	210	95	168	76	650	295	1028	466	TH5K115	H155FT*
12.00R24RL-4J	50.3	1278	335	152	168	76	650	295	1153	523		
14.00R24	55.1	1400	420	191	163	74	705	320	1288	585	TH5K115	H155FT*
14.00R 24RL-4J	55.6	1412	490	222	163	74	705	320	1358	616		
14.00R24	54.9	1394	511	232	163	74	705	320	1379	626		
30/65R25 RL -2+	64.1	1628	893	405	516	234	705	320	2114	959	TH5K115	H155FT*
14.00R25 RL-4F	55.6	1412	435	197	267	121	705	320	1407	638		
14.00R25	55.2	1402	420	191	267	121	705	320	1392	632		
15.5R 25 X MINE-D2	52.6	1336	494	224	159	72	584	265	1236	561	TH5K115	H155FT*
16.00-25	60.9	1547	570	259	304	138	451	205	1325	602	TH5K115	H155FT*
16.00-25HRL-4B	59.9	1521	587	266	304	138	451	205	1342	609		
16.00R25 XHD1 A	59.8	1519	606	275	304	138	451	205	1362	618		
17.5R25	52.8	1341	350	159	340	154	518	235	1208	548	TH5K115	H155FT*
17.5R25	54.9	1394	457	297	340	154	518	235	1314	686		
17.5R25RL-2+	54.3	1379	368	167	340	154	518	235	1226	556		
18.00-25	64.5	1638	830	376	362	164	1627	738	2819	1278	TH5K115	H155FT*
18.00-25 ELV 4B	65.8	1671	834	378	362	164	1627	738	2823	1280		
18.00R25 XHD1A	65.7	1669	844	383	362	164	1627	738	2833	1285		
21.00R25	68.0	1727	750	340	408	185	828	376	1986	901	TH5K115	H155FT*
21.00-25 EAW-7A	69.5	1765	922	418	408	185	828	376	2158	979		
21.00R25	69.6	1768	1043	473	408	185	828	376	2278	1034		
21.00R35	80.6	2047	1400	635	644	292	828	376	2872	1303		
21.00 R35 RL-4J	80.9	2055	1440	653	644	292	828	376	2912	1321		
21.00R35	80.6	2047	1442	654	644	292	828	376	2914	1322		
23.5R25	64.3	1633	850	386	423	192	1862	845	3135	1423	TH5K115	H155FT*
23.5R25	65.2	1656	1086	493	423	192	1862	845	3371	1530		
23.5-25 HRL D/L-5A	66.4	1687	1201	545	423	192	1862	845	3486	1582	TH5K115	H155FT*
24.00R35	86.4	2195	1900	862	712	323	593	269	3205	1454		
24.00R35 RL-3+	84.0	2134	1860	844	712	323	593	269	3165	1436		
24.00R35	84.9	2156	1858	843	712	323	593	269	3163	1435		
26.5R25	68.3	1735	1010	458	492	223	2460	1116	3962	1797	TH5K115	H155FT*
26.5-25 HRL D/L-4A	70.6	1793	1326	601	492	223	2460	1116	4278	1940		
26.5 R 25 X MINE-D2	70.6	1793	1517	688	492	223	2460	1116	4468	2027		
29.5-25	74.0	1880	1150	522	536	243	2566	1164	4252	1929	TH5K115	H155FT*
29.5-25 HRL D/L 4A	74.4	1890	1659	753	536	243	2566	1164	4761	2160		
29.5R25 X MINE-D2	74.8	1900	1878	609	536	243	2566	1164	4979	2016		
26.5R29 XSMD1	71.9	1826	1840	835	640	292	1701	772	4181	1899	TH5K115	H155FT*
29.5-29	77.8	1976	1290	585	644	292	2658	1206	4592	2083	TH5K115	H155FT*
29.5R29	78.0	1981	1887	856	644	292	2658	1206	5189	2354	TH5K115	H155FT*
18.00R33	74.4	1890	1080	490	498	226	1410	640	2988	1356		
18.00R33 RL-4J	73.7	1872	1075	488	498	226	1410	640	2983	1354		
18.00R33	73.7	1872	1034	469	498	226	1410	640	2942	1335	TH5K115	H155FT*

Chain weights are based on Pewag production chains for tire sizes shown. Contact Pewag Chains for order details.

Tire, wheel rim and chain sizes and weights are based on OEM specifications for tires currently in production as of February 2014.

* H155FT - TH5K115 available via SPED. Contact Hyster Company for details.

TIRE INFORMATION											IMT TH MODEL	FORKLIFT MODEL		
Tire Size	Outside Diameter	Outside Diameter	Typical Tire Weight	Typical Tire Weight	Typical Rim Weight	Typical Rim Weight	Typical Chain Weights	Typical Chain Weights	Total Weight	Total Weight	MOUNTING STYLE: Hang-on Dual use equipment providing both tire handling & flexibility for use as a forklift truck			
	in	mm	lbs	kg	lbs	kg	lbs	kg	lbs	kg				
21.00-35	80.3	2040	1350	612	644	292	828	376	2822	1280				
21.00-35 MRL-4B	80.1	2035	1500	680	644	292	828	376	2972	1348	TH5K115	H155FT*		
21.00R35	80.6	2047	1442	654	644	292	828	376	2914	1322				
24.00R35	86.4	2195	1900	862	712	323	593	269	3205	1454	TH5K115	H155FT*		
24.00R35 RL-4J	86.4	2195	1830	830	712	323	593	269	3135	1422				
24.00R35	84.9	2156	1858	843	712	323	593	269	3163	1435				
29.5R35	83.5	2121	1580	717	720	488	835	379	3135	1584	TH5K115	H155FT*		
29.5-35 HRL-3B	83.3	2116	1478	670	720	488	835	379	3033	1537				
29.5-35	83.2	2113	1481	672	720	488	835	379	3036	1539				
21.00-49 HRL-4B	94.5	2400	1764	800	1076	488	835	379	3675	1667	TH5K115	H155FT*		
24.00R49	99.6	2530	2320	1052	1078	489	835	379	4233	1920	TH5K115	H155FT*		
24.00R49 RL-4	98.8	2510	2390	1084	1078	489	835	379	4303	1952				
24.00R49	98.9	2512	2191	994	1078	489	835	379	4104	1862				
27.00R49	106.6	2708	3150	1429	1241	563	981	445	5372	2437	TH10K135	H360HD ₂		
27.00R49 RL-4J	106.3	2700	3015	1368	1241	563	981	445	5237	2376				
27.00R49	106.1	2695	3054	1385	1241	563	981	445	5277	2393				
30.00-51	114.3	2903	3590	1628	1975	896	2341	1062	7906	3586	TH10K135	H360HD ₂		
30.00R51 RL-4H	115.6	2936	4560	2068	1975	896	2341	1062	8876	4026				
30.00R51	113.8	2891	3929	1782	1975	896	2341	1062	8245	3740				
33.00R51	120.6	3063	4940	2241	2123	963	2738	1242	9801	4446	TH10K135	H360HD ₂		
33.00-51 HRL-4B	120.2	3053	4560	2068	2123	963	2738	1242	9421	4273				
33.00R51	119.5	3035	4869	2208	2123	963	2738	1242	9730	4413				
36.00R51	126.1	3203	5680	2576	2286	1037	1873	850	9839	4463	TH15K160	H360-48HD		
36.00-51HRL-4B	127.8	3246	6120	2776	2286	1037	1873	850	10279	4663				
36.00R51	126.5	3213	6101	2767	2286	1037	1873	850	10260	4654				
35/65-33	80.7	2050	2779	1260	723	328	2998	1360	6500	2948	TH15K160	H360-48HD		
37.00R57	134.7	3421	6690	3035	2758	1251	3359	1524	12807	5810	TH15K160	H360-48HD		
37.00R57 RL-4H	135.5	3442	6750	3062	2758	1251	3359	1524	12867	5837				
37.00-57	136.1	3457	7106	3223	2758	1251	3359	1524	13223	5998				
40.00R57	140.7	3574	8490	3851	2800	1270	7687	3487	18977	8608	TH20K167	H450HDS		
46/90R57	140.7	3574	8800	3992	2800	1270	5879	2667	17479	7929				
50/90R57	150.6	3825	10320	4681	3609	1637	11878	5388	25807	11706	TH25K164 or TH25K164L	H550HDS		
50/90R57	150.0	3810	10113	4587	3609	1637	11878	5388	25600	11612				
55/80R63	154.0	3912	11200	5080	6235	2828	11878	5388	29313	13296	Not Available (Requires Integral Model)	H650HDS		
55/80R63	147.6	3749	10177	4616	6235	2828	11878	5388	28290	12832				
59/80R63	158.5	4026	11200	5080	6453	2927	11878	5388	29531	13395				
59/80R63	158.5	4026	11735	5323	6453	2927	11878	5388	30066	13638				

Chain weights are based on Pewag production chains for tire sizes shown. Contact Pewag Chains for order details.

Tire, wheel rim and chain sizes and weights are based on OEM specifications for tires currently in production as of February 2014.

* H155FT - TH5K115 available via SPED. Contact Hyster Company for details.

LOADER AND SCRAPER TIRES

HANG-ON ATTACHMENT MOUNTING

TIRE INFORMATION											IMT TH MODEL	FORKLIFT MODEL
Tire Size	Outside Diameter	Outside Diameter	Typical Tire Weight	Typical Tire Weight	Typical Rim Weight	Typical Rim Weight	Typical Chain Weights (bs)	Typical Chain Weights	Total Weight	Total Weight	MOUNTING STYLE: Hang-on Dual use equipment providing both tire handling & flexibility for use as a forklift truck	
	in	mm	lbs	kg	lbs	kg	lbs	kg	lbs	kg		
14.00-24	53.3	1354	530	181	163	74	705	320	1398	575	TH5K115	H155FT*
14.00-24 SMO-5B	55.6	1412	612	278	163	74	705	320	1480	672		
15.5R 25	50.2	1275	270	122	159	72	584	265	1013	459	TH5K115	H155FT*
15.5R25 XTL A *	50	1270	250	113	159	72	584	265	993	450		
16.00-25	60.5	1537	780	354	304	138	584	265	1668	757	TH5K115	H155FT*
16.00-25AMS-4/5A	59.9	1521	705	320	304	138	584	265	1593	723		
16.00R25	60.2	1529	639	290	304	138	584	265	1528	693		
17.5-25	54.5	1384	610	277	340	154	518	235	1468	666	TH5K115	H155FT*
17.5-25 AMS D/L-5	55.1	1400	729	331	340	154	518	235	1587	720		
17.5R25	55.4	1407	655	297	340	154	518	235	1512	686		
18.00-25	65.9	1674	1300	590	362	164	1627	738	3289	1492	TH5K115	H155FT*
18.00-25 SMO-5B	65.6	1666	1146	520	362	164	1627	738	3135	1422		
18.00R25	65.1	1654	1136	515	362	164	1627	738	3125	1417		
20.5-25	61.3	1557	920	417	364	165	1514	687	2798	1269	TH5K115	H155FT*
20.5R25 X MINE-D2	60.2	1529	879	399	364	165	1514	687	2757	1251		
20.5-25 RL-5K*	60.4	1534	840	381	364	165	1514	687	2718	1233		
21.00-25	70.8	1798	1520	689	408	185	1862	845	3790	1719	TH5K115	H155FT*
21.00R25	68.9	1750	1097	498	408	185	1862	845	3367	1528		
23.5R25	65.8	1671	1170	531	423	192	1862	845	3455	1568	TH5K115	H155FT*
23.5R25	65.4	1661	1086	493	423	192	1862	845	3371	1530		
23.5-25 HRL D/L-5A	66.4	1687	1201	545	423	192	1862	845	3486	1582		
26.5-25	70.8	1798	1910	866	492	223	2460	1116	4862	2205	TH5K115	H155FT*
26.5-25 AMS D/L-5	71	1803	1679	762	492	223	2460	1116	4631	2101		
26.5R25	70.9	1801	1795	814	492	223	2460	1116	4746	2153		
29.5-25	75.6	1920	1860	844	536	243	2566	1164	4962	2251	TH5K115	H155FT*
29.5R25	78.5	1994	1690	766	536	243	2566	1164	4791	2173		
29.5R25 RL-5K	75.6	1920	2160	980	536	243	2566	1164	5262	2387		
26.5R29 GP-3	73.1	1857	1200	544	650	161	1701	772	3551	1477	TH5K115	H155FT*
26.5R29	72.4	1839	1243	564	650	161	1701	772	3594	1497		
29.5R29	79.1	2009	2390	1084	644	292	2658	1206	5692	2582	TH5K115	H155FT*
29.5-29AMS D/L-5	78.8	2002	2526	1146	644	292	2658	1206	5828	2644		
29.5R29 XLD D2 A	78.9	2004	1819	825	644	292	2658	1206	5120	2323		
33.25R29	82	2083	2380	1080	650	385	2017	915	5047	2380	TH5K115	H155FT*
33.25R29RL-2F	82.2	2088	1740	789	650	385	2017	915	4407	2089		
33.25-29	81.7	2075	1925	873	650	385	2017	915	4592	2173		
30/65-29NRL D/L-5A	71.3	1811	1715	777	650	385	2017	915	4382	2077	TH5K115	H155FT*
30/65R-29	70.2	1783	1505	683	650	385	2017	915	4172	1983		
33.5-33	88.8	2256	1930	875	849	385	2998	1360	5777	2620	TH10K135	H360HD ₂
33.5-33HRL D/L 4A	87.7	2228	2988	1355	849	385	2998	1360	6835	3100		
33.5-33	87.7	2228	2064	936	849	385	2998	1360	5910	2681		
37.5-33HRL D/L-3A	93.3	2370	2754	1249	850	328	2998	1360	6602	2937	TH10K135	H360HD ₂
35/65-33	81.7	2075	3300	1497	723	328	2998	1360	7021	3185	TH10K135	H360HD ₂
35/65-33	80.9	2055	2779	1260	723	328	2998	1360	6500	2948		
29.5R35 XTS TL	83.5	2121	1481	672	900	328	2998	1360	5379	2360	TH10K135	H360HD ₂
33.25-35	90.4	2296	3210	1456	900	328	2998	1360	7108	3144		
33.25-35 SMO D/L -5B	91.1	2314	3430	1556	900	328	2998	1360	7328	3244		
33.25-35	87.5	2223	2989	1356	900	328	2998	1360	6887	3044		

Chain weights are based on Pewag production chains for tire sizes shown. Contact Pewag Chains for order details.

Tire, wheel rim and chain sizes and weights are based on OEM specifications for tires currently in production as of February 2014.

* H155FT - TH5K115 available via SPED. Contact Hyster Company for details.

LOADER AND SCRAPER TIRES

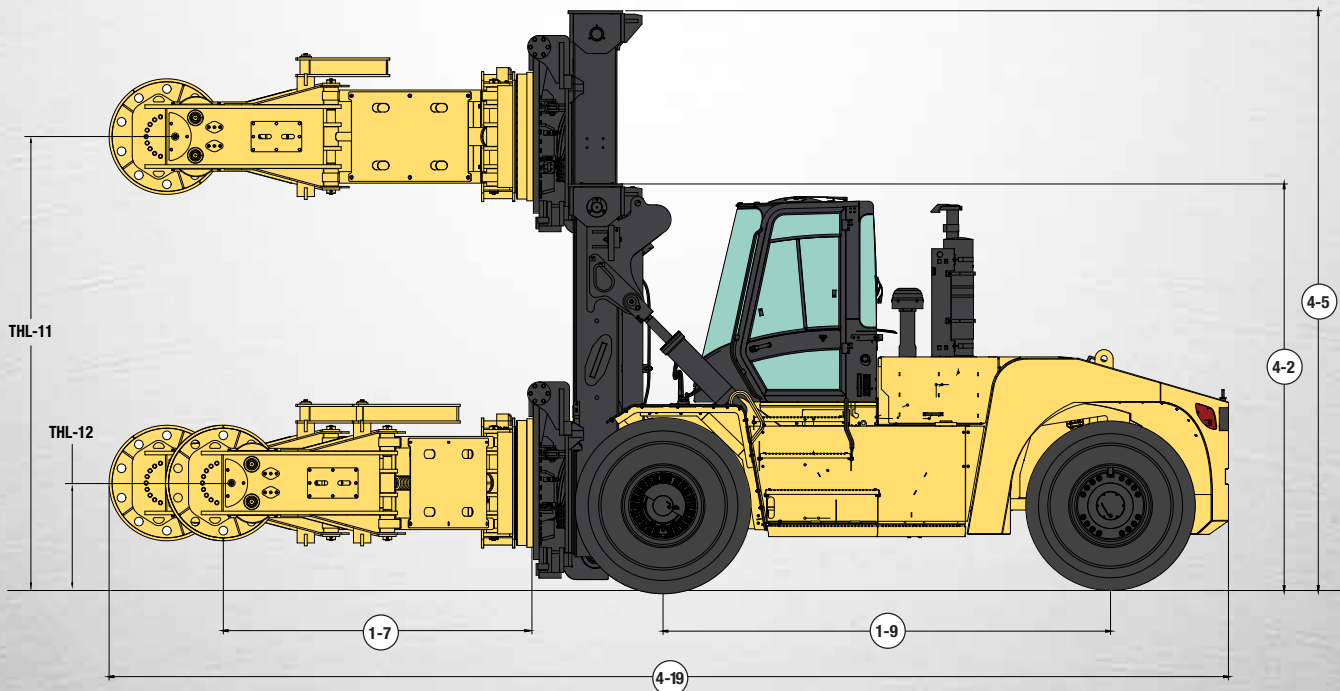
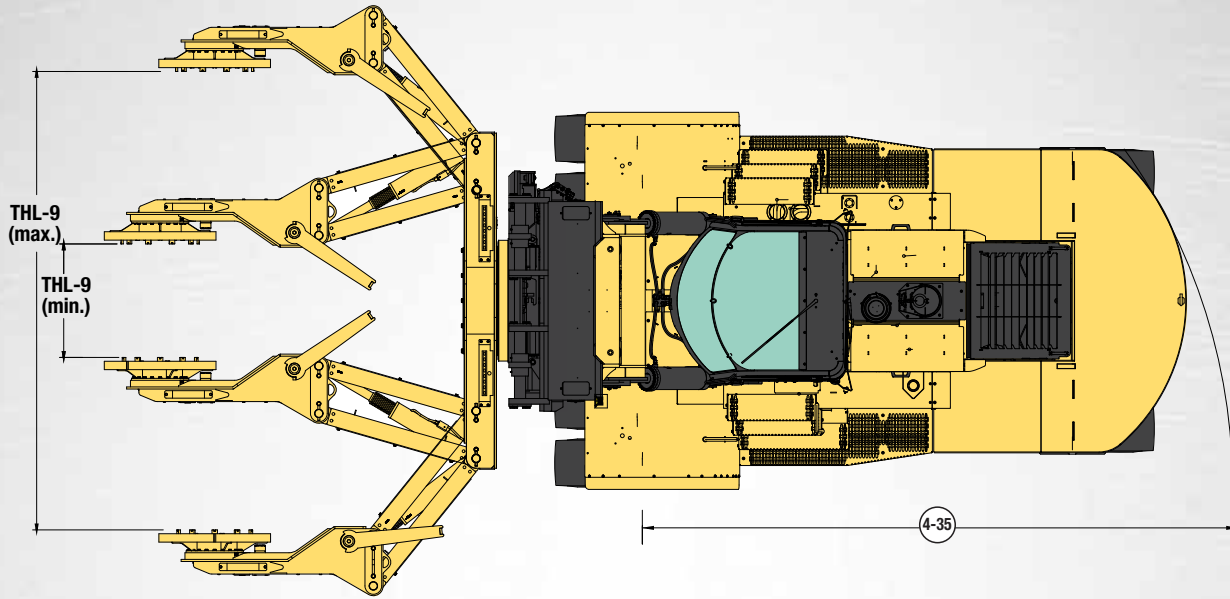
HANG-ON ATTACHMENT MOUNTING

TIRE INFORMATION											IMT TH MODEL	FORKLIFT MODEL	
Tire Size	Outside Diameter	Outside Diameter	Typical Tire Weight	Typical Tire Weight	Typical Rim Weight	Typical Rim Weight	Typical Chain Weights	Typical Chain Weights	Total Weight	Total Weight	MOUNTING STYLE: HANG-ON Dual use equipment providing both tire handling & flexibility for use as a forklift truck		
	in	mm	lbs	kg	lbs	kg	lbs	kg	lbs	kg			
37.25-35 HRL D/L-5A	95	2413	4122	1870	900	552	4717	2140	9739	4562	TH10K135	H360HD ₂	
37.25R35	93.1	2365	3929	1782	900	552	4717	2140	9546	4474			
37.5-39 HRL D/L-5A	100.8	2560	4614	2093	1300	552	4717	2140	10631	4785	TH10K135	H360HD ₂	
37.5-39	99.4	2525	3871	1756	1300	552	4717	2140	9888	4448			
41.25/70-39	98.8	2510	4600	2087	1217	552	4717	2140	10534	4779	TH15K160	H360-48HD	
41.25/70-39 NRL D/L-5A	98.4	2499	4675	2121	1217	552	4717	2140	10609	4813			
40/65-39	95.3	2421	4130	1873	1239	562	5242	2378	10611	4813	TH15K160	H360-48HD	
40/65-39 NRL D/L-5A	94.4	2398	3855	1749	1239	562	5242	2378	10336	4689			
40/65R39	93.8	2383	3443	1562	1239	562	5242	2378	9924	4502			
40.5/75R39 RL-4K	101.4	2576	3668	1664	1300	562	6657	3020	11625	5246	TH15K160	H360-48HD	
40.5/75R39	101.9	2588	3221	1461	1300	562	6657	3020	11178	5043			
45/65-45	107.5	2731	6610	2998	1625	737	6657	3020	14892	6755	TH15K160	H360-48HD	
45/65-45 ND/L D/L-5/15C	107.6	2733	5920	2685	1625	737	6657	3020	14202	6442			
45/65R45	107.8	2738	5929	2689	1625	737	6657	3020	14211	6446			
50/65-51	120.9	3071	8010	3633	2443	1108	8247	3741	18700	8482	TH20K167 or TH20K167L	H450HDS	
50/65-51 NRL D/L-5A	120.5	3061	7981	3620	2443	1108	8247	3741	18671	8469			
49.5/85-57	155.6	3952	11830	5366	3393	1539	9197	4172	24420	11077	TH25K164 or TH25K164L	H650HDS	
50/80-57	143.9	3655	9450	4286	3393	1539	9986	4530	22829	10355			
50/80-57 68HRL D/L 4G	140.9	3579	9328	4157	3393	1539	9986	4530	22707	10226	TH25K164 or TH25K164L	H650HDS	
52/80-57 68 HRL D/L 4G	140.9	3579	10480	4754	3500	1837	9859	4472	23839	11063			
53.5/85-57	155.6	3952	13050	5919	3500	1837	11448	5193	27998	12949	TH25K164 or TH25K164L	H650HDS	
55/80R57	146.9	3731	11962	5426	4050	1837	10716	4861	26728	12124			
55/80R63	154	3912	11200	5080	6235	2828	11878	5388	29313	13296	TH25K164 or TH25K164L	H650HDS	
58/85-57	155.9	3960	12810	5811	4120	1869	11858	5379	28788	13059			
60/80R57	155.5	3949	14013	6356	4081	1851	12206	5537	30300	13744	Not Available (Requires Integral Model)	H650HDS	
65/65-57	147	3734	16500	7484	4513	2047	12101	5489	33114	15020			
70/70-57	158	4013	14740	6686	4500	2047	13549	6146	32789	14879			

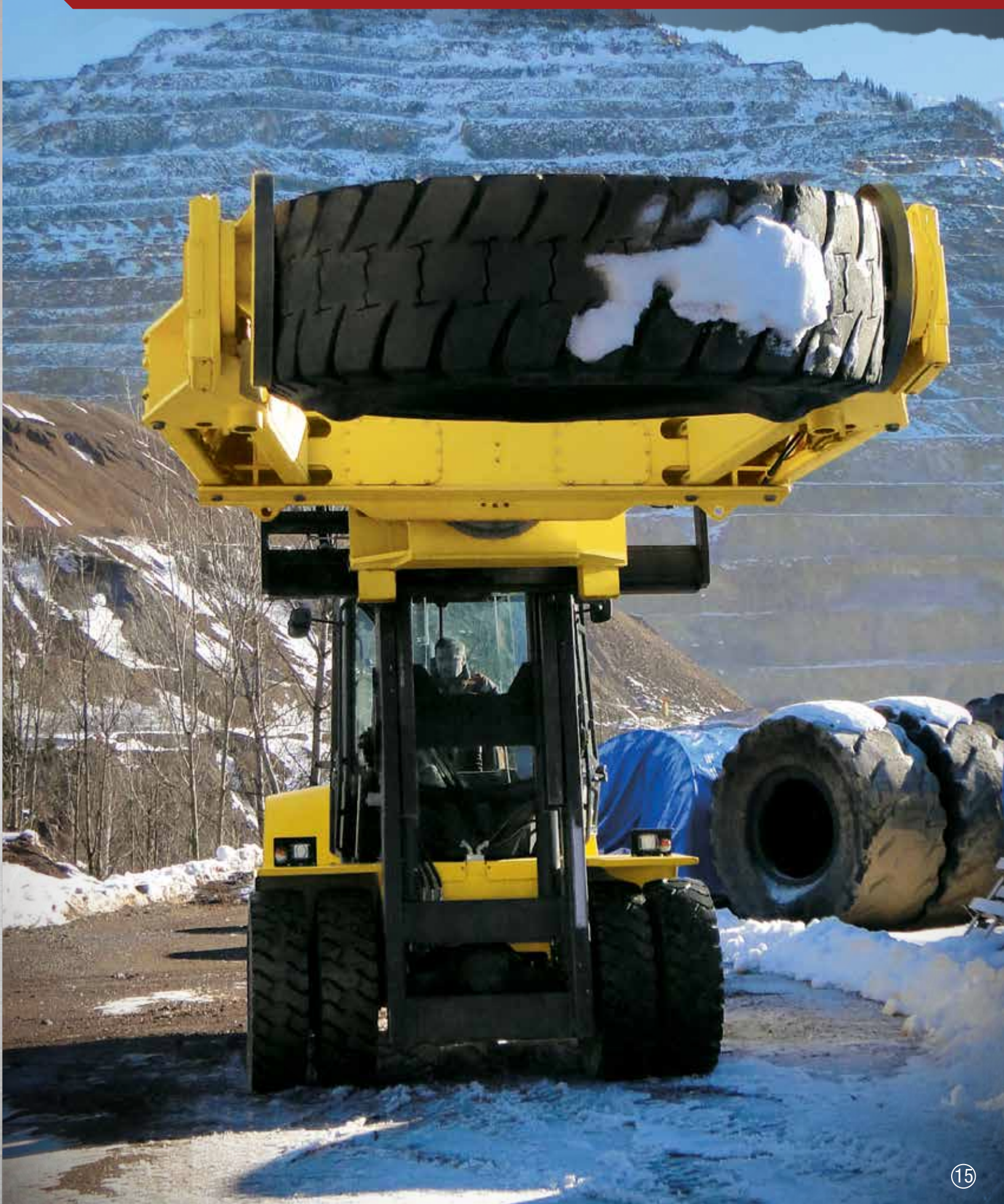
Chain weights are based on Pewag production chains for tire sizes shown. Contact Pewag Chains for order details.

Tire, wheel rim and chain sizes and weights are based on OEM specifications for tires currently in production as of February 2014.

TRUCK AND ATTACHMENT SPECIFICATIONS



HEAVY DUTY TIRE HANDLER TRUCK



SPECIFICATIONS

INTEGRAL ATTACHMENT MOUNTING

TRUCK SPECIFICATIONS

		Units	English	Metric	English	Metric	English	Metric	English	Metric	English	Metric	English	Metric	English	Metric	English	Metric	
1-1	Manufacturer	HYSTER																	
1-2	Model designation			H155FT		H330HD ₂		H360-48HD		H450HDS		H550HDS		H550HDS		H700HDS		H620HD	
1-3	Nominal load capacity – forklift truck	lbs	kg	15500	7031	33000	14969	36000	16329	45000	20412	55000	24948	55000	24948	70000	31751	62000	28123
1-4	Rated load capacity – tire handler	lbs	kg	5500	2495	10000	4536	15000	6804	20000	9072	25000	11340	25000	11340	32000	14515	31600	14334
1-6	Load center – forklift truck	in	mm	24	610	24	610	48	1220	36	920	48	1220	48	1220	48	1220	48	1220
1-8	Load distance (from pad center)	in	mm	28.9	735	33.9	862	35.3	897	42.8	1087	43.7	1109	43.7	1109	45.1	1140	45.1	1140
1-9	Wheelbase	in	mm	88	2235	130	3302	148	3759	138	3505	144	3658	144	3658	155	3937	170	4318
4-1	Mast tilt (forward/back)	degrees	5° F / 10° B		15° F / 12° B		15° F / 10° B		10° F / 12° B		15° F / 10° B								
4-2	Height of mast lowered (with tire handler attachment)	in	mm	133	3378	143	3641	145	3680	141	3562	150	3820	150	3820	154	3919	154	3919
4-3	Free lift (center of grab pad)	in	mm	3.9	99	0	0	0	0	0	0	0	0	0	0	0	0	0	0
4-4	Lift height	in	mm	132	3340	148	3750	156	3984	208	5283	144	3655	144	3655	144	3655	144	3655
4-5	Height of mast extended*	in	mm	181	4595	215	5470	222	5622	277	7036	199	5042	199	5042	226	5745	226	5745
4-19	Overall length with attachment	in	mm	192.4	4887	268	6796	310	7878	216	5477	255	6477	255	6477	256	6502	256	6502
4-21	Overall width over drive tires	in	mm	82	2082	102	2592	100	2542	116	2950	127	3225	127	3225	133	3378	133	3378
4-22	Fork dimensions	None																	
4-24	Carriage type	Integrated base carriage																	
4-25	Carriage width	in	mm	78	1981	98.5	2502	100	2540	115	2921	122	3100	122	3100	129	3280	129	3280
4-35	Outside turning radius (with attachment)	in	mm	133	3388	207	5250	229	5829	239	6063	250	6358	250	6358	250	6356	257	6527

ATTACHMENT SPECIFICATIONS

THL-1	Manufacturer	IMT																	
THL-2	Model designation			TH5K115		TH10K135		TH15K160		TH20K167		TH25K164		TH25K164L		TH36K164		TH36K164L	
THL-3	Tire handler capacity	lbs	5,500			10,000		15,000		20,000		25,000		25,000		36,000		36,000	
THL-4	Tire handler weight	lbs	kg	2500	1134	8750	3969	9200	4173	10500	4763	13550	6146	13850	6282	13850	7484	16750	7598
THL-5	Horizontal load center – tire handler	in	mm	83	2110	105	2667	114	2895	117.5	2885	131	3327	131	3327	121	3073	131	3327
THL-6	Body rotate	degrees	350° gear			100°													
THL-7	Pad rotate	degrees	+ /- 60°			360° endless													
THL-8	Sideshift	Yes																	
THL-9	Minimum Clamping Span	in	mm	28	710	43	1092	50	1270	50	1270	48	1219	48	1219	48	1219	48	1219
	Maximum Clamping Span	in	mm	115	2920	160	4064	167	4242	167	4242	164	4166	164	4166	164	4166	164	4166
THL-10	Fallback arm	Mechanical				Hydraulic Actuated													
THL-11	Pad center height at max lift	in	mm	97	2453	144	3660	153	3884	105	2675	120	3046	120	3046	120	3046	120	3046
THL-12	Pad center height at pads to ground	in	mm	18.4	467	28.2	717	26.5	674	31.5	800	37.4	949	37.4	949	37.4	949	37.4	949

* Optimal mast heights shown. A number of mast height options are available. Contact Hyster Company for details.

**H360HD₂ can also be ordered in lieu of H330HD₂ via SPED. Contact Hyster Company for details.

SPECIFICATIONS

HANG-ON ATTACHMENT MOUNTING

TRUCK SPECIFICATIONS															
		Units		English	Metric	English	Metric	English	Metric	English	Metric	English	Metric	English	Metric
1-1	Manufacturer	HYSTER													
1-2	Model designation			H155FT		H360HD ₂		H360-48HD		H450HDS		H650HDS		H650HDS	
1-3	Nominal load capacity – forklift truck	lbs	kg	15500	7030	36000	16329	36000	16329	45000	18000	65000	30000	65000	30000
1-4	Rated load capacity – tire handler	lbs	kg	5500	2495	11900	5398	15000	6804	20000	9072	25000	11340	25000	11340
1-6	Load center – forklift truck	in	mm	24.0	610	24.0	610	48.0	1220	36.0	920	48.0	1220	48.0	1220
1-8	Load distance (from pad center)	in	mm	28.9	735	33.9	862.0	35.3	897.0	42.8	1087.0	45.1	1140.0	45.1	1140.0
1-9	Wheelbase	in	mm	88	2235	130	3300	148	3750	138	3500	155	3937	155	3937
4-1	Mast tilt (forward/back)	degrees		5° F / 10° B		15° F / 12° B		15° F / 10° B		10° F / 12° B		15° F / 10° B			
4-2	Height of mast lowered (with tire handler attachment)	in	mm	133	3378	143	3641	145	3680	141	3562	154	3919	154	3919
4-3	Free lift (center of grab pad)	in	mm	3.9	99	0	0	0	0	0	0	0	0	0	0
4-4	Lift height	in	mm	132	3340	148	3750	156	3984	208	5283	144	3655	144	3655
4-5	Height of mast extended*	in	mm	181	4595	215	5470	222	5622	277	7036	226	5745	226	5745
4-19	Overall length with attachment	in	mm	192.4	4887	268	6796	310	7878	216	5477	256	6502	256	6502
4-21	Overall width over drive tires	in	mm	82	2082	102	2592	100	2542	116	2950	133	3378	133	3378
4-22	Fork dimensions (LxWxH)	in		2.5 x 6.0 x 48		3.5 x 8.0 x 72		3.9 x 7.9 x 96		3.9 x 9.8 x 96		4.3 x 11.8 x 96		4.3 x 11.8 x 96	
	Fork dimensions (LxWxH)	mm		60 x 150 x 1219		90 x 200 x 1825		100 x 200 x 2440		100 x 250 x 2440		110 x 300 x 2438		110 x 300 x 2438	
4-24	Carriage type			Class IV Hang-On		Apron Sideshift		Dual Function Sideshift w/FP							
4-25	Carriage width	in	mm	78	1981	98.5	2502	100	2540	115	2921	129	3280	129	3280
4-35	Outside turning radius (with attachment)	in	mm	133	3388	207	5250	229	5829	239	6063	250	6358	250	6358
ATTACHMENT SPECIFICATIONS															
THL-1	Manufacturer	IMT													
THL-2	Model designation			TH5K115		TH10K135		TH15K160		TH20K167		TH25K164		TH25K164L	
THL-3	Tire handler capacity	lbs		5,500		10,000		15,000		20,000		25,000		25,000	
THL-4	Tire handler weight	lbs	kg	2500	1134	8750	3969	9200	4173	10500	4763	13550	6146	13850	6282
THL-5	Horizontal load center – tire handler	in	mm	83	2110	105.0	2667	114	2895	117.5	2885	121	3073	131	3327
THL-6	Body rotate	degrees		350° gear		100°									
THL-7	Pad rotate	degrees		+/- 60°		360° endless									
THL-8	Sideshift	Yes													
THL-9	Minimum Clamping Span	in	mm	28	710	43	1092	50	1270	50	1270	48	1219	48	1219
	Maximum Clamping Span	in	mm	115	2920	160	4064	167	4242	167	4242	164	4166	164	4166
THL-10	Fallback arm			Mechanical				Hydraulic Actuated							
THL-11	Pad center height at max lift	in	mm	97	2453	144	3660	153	3884	105	2675	120	3046	120	3046
THL-12	Pad center height at pads to ground	in	mm	18.4	467	28.2	717	26.5	674	31.5	800	37.4	949	37.4	949

*Optimal mast heights shown. A number of mast height options are available. Contact Hyster Company for details.

INNOVATIVE TRUCKS ENGINEERED TO MEET THE MOST DEMANDING APPLICATIONS

For more than 80 years, Hyster has been conquering the world's most demanding applications. In the 1920's Hyster started as a manufacturer of lifting machines used in the rigorous logging industry of the United States' Pacific Northwest. A few years later the first forklift trucks were invented and the Hyster brand quickly gained its reputation for rugged quality. The renowned rugged quality is brought to bear in the new Hyster line of Tire Handler trucks. Hyster® tire handler trucks are designed to lower your cost of operations. Every truck we make — gasoline, LPG, diesel and electric — is purpose-built to excel in its application. Every truck is also backed by an unmatched network of specialists.



Dealer Network — Our Dealer Network can offer the expertise of fleet managers, parts suppliers, capital procurement specialists and trainers. Hyster's carefully chosen dealers fully understand customer applications, assist in selecting the right lift truck and provide fast, reliable support.



Hyster Fleet Services — Even if you operate other brands, we can manage your maintenance and replacement plan. We can offer complete fleet analysis, fleet history summary and a cost-effective proposal for replacement and scheduled maintenance.



Parts — With genuine Hyster replacement parts and UNISOURCE™ parts for all makes of lift trucks, we are your one-stop source for lift truck parts. In fact, we offer more than 2 million part number crosses for most brands of materials handling and other in-plant mobile equipment.



Rental Products — When leasing or buying isn't a practical option, we have access to more than 14,000 units for short- and long-term rental. We'll help you maintain output in a cost-effective manner.



Hyster Capital — We can arrange solutions for special financing requirements, taking the difficulties out of buying the equipment you need. Whether you purchase or lease a new or used lift truck, Hyster Capital offers superior service and competitive rates.



Special Products Engineering Department (SPED) — Different materials require different handling. That's why we can work with you to customize your lift trucks. From strobe lights to specially made forks, SPED has the tools to help you get the job done right.



Operator Training — Proper education in operating lift trucks minimizes the risk of injuries due to accidents while increasing productivity. Hyster offers OSHA-compliant materials that support the training of qualified operators.




Service — Your local Hyster® dealer offers a flexible, customized and comprehensive maintenance plan based on each lift truck's operation environment. Hyster service programs offer scheduled inspections and maintenance, along with quick, responsive service dispatched to your location.





Hyster Company
P.O. Box 7006
Greenville, North Carolina
27835-7006
Part No. TH-IMT/B
10/2014 Litho in U.S.A.

Visit us online at www.hyster.com or call us at 1-800-HYSTER-1.

Hyster, and  are registered trademarks of Hyster Company.
Hyster products are subject to change without notice.

The Hyster Company product included in this document may be covered by U.S. Patent 6,684,148 and other patents pending.
Per OSHA regulations, tires should be transported in the horizontal position. Trucks pictured with tires in vertical position are in park.
All trucks shown with optional equipment. © 2014 Hyster Company. All rights reserved.