

H280XD48-400XD SERIES



HEAVY DUTY FORKLIFT TRUCK PNEUMATIC TIRE PRODUCT TECHNICAL GUIDE



H280XD48 | 330XD48 | 360XDS36 | H360XDS48 SPECIFICATIONS

		HYSTER				HYSTER				HYSTER				HYSTER								
		H280XD48				H330XD48				H360XDS36				H360XDS48								
GENERAL	1-1	Manufacturer		HYSTER																		
	1-2	Model designation		H280XD48				H330XD48				H360XDS36				H360XDS48						
	1-3	Powertrain/drivetrain		Diesel				Diesel				Diesel				Diesel						
	1-4	Operator type		Seated				Seated				Seated				Seated						
	1-5	Rated load capacity	lb	kg	28,000		12,701		33,000		14,969		36,000		16,329		36,000		16,329			
	1-6	Load center	in	mm	48		1,219		48		1,219		36		914		48		1,219			
	1-8	Load distance	in	mm	35.0		889		37.0		940		37.0		940		37.0		940			
	1-9	Wheelbase	in	mm	138		3,500		138		3,500		138		3,500		138		3,500			
	WEIGHTS	2-1	Total truck weight without load		lb	kg	42,817		19,421		49,104		22,273		47,563		21,574		51,546		23,381	
2-2		Axle loading with load, front/rear		lb	kg	64,761	6,056	29,375	2,747	75,119	6,985	34,073	3,168	77,050	6,512	34,949	2,954	79,973	7,574	36,275	3,436	
2-3		Axle loading without load, front/rear		lb	kg	19,895	22,922	9,024	10,397	21,752	27,352	9,867	12,407	21,966	25,596	9,964	11,610	21,754	29,793	9,867	13,514	
WHEELS	3-1	Tire type		Type																		
	3-2	Tire size, front		12.00-20 16PR				12.00-20 16PR				12.00-20 16PR				12.00-20 16PR						
	3-3	Tire size, rear		12.00-20 16PR				12.00-20 16PR				12.00-20 16PR				12.00-20 16PR						
	3-5	Number of tires, front/rear (X driven)		#				x4/2				x4/2				x4/2						
	3-6	Tread width, front		in	mm	72.5		1,842		72.6		1,844		72.6		1,844		72.6		1,844		
	3-7	Tread width, rear		in	mm	79.4		2,018		79.5		2,020		79.5		2,020		79.5		2,020		
	DIMENSIONS	4-1	Mast tilt, forward/back		Degrees																	
4-2		Height of mast lowered		in	mm	141		3,568		146		3,703		146		3,703		146		3,703		
4-3		Freelift		in	mm	0		0		0		0		0		0		0		0		
4-4		Lift height (top of fork)		in	mm	147		3,750		157		3,984		157		3,984		157		3,984		
4-4-1		Lift height (bottom of fork)		in	mm	144		3,660		153		3,884		153		3,884		153		3,884		
4-5		Height, extended		in	mm	213		5,398		222		5,644		222		5,644		222		5,644		
4-7		Height to top of operator compartment (open cab)		in	mm	121.4		3,084		121.4		3,084		121.4		3,084		121.4		3,084		
4-7-1		Height, top of operator comp (closed cab)		in	mm	122.4		3,109		122.4		3,109		122.4		3,109		122.4		3,109		
4-7-2		Height, top of operator comp (closed cab w/ AC)		in	mm	122.4		3,109		122.4		3,109		122.4		3,109		122.4		3,109		
4-7-3		Height, top of operator comp (closed cab w/ strobe light)		in	mm	126.2		3,205		126.2		3,205		126.2		3,205		126.2		3,205		
4-7-4		Height, top of operator comp (closed cab w/ work lights)		in	mm	128.3		3,259		128.3		3,259		128.3		3,259		128.3		3,259		
4-7-5		Height, top of operator comp (closed cab w/ AC & strobe)		in	mm	127.4		3,236		127.4		3,236		127.4		3,236		127.4		3,236		
4-8		Seat height to seat point index (SIP)		in	mm	75		1,902		75		1,902		75		1,902		75		1,902		
4-19		Overall length		in	mm	305		7,754		307		7,805		307		7,805		307		7,805		
4-20		Length to load face		in	mm	209		5,314		211		5,367		211		5,367		211		5,367		
4-21		Overall width of truck		in	mm	100		2,540		100		2,540		100		2,540		100		2,540		
4-22		Fork dimension		in	mm	3.5/8/96		90/200/2,440		3.9/8/96		100/200/2,440		3.9/8/96		100/200/2,440		3.9/8/96		100/200/2,440		
4-23		Fork carriage type		Type																		
4-24		Carriage width		in	mm	98.3		2,496		100		2,540		100		2,540		100		2,540		
4-25-1		Fork spread, min (in-in)		in	mm	2.8		70		2.8		70		2.8		70		2.8		70		
4-25-2		Fork spread, max (out-out)		in	mm	91.3		2,320		96.1		2,440		96.1		2,440		96.1		2,440		
4-30		Sideshift		in	mm	0		0		0		0		0		0		0		0		
4-31		Ground clearance, under mast w/o load		in	mm	9.6		245		8.9		226		8.9		226		8.9		226		
4-32		Ground clearance, center of wheelbase		in	mm	13.4		341		13.4		341		13.4		341		13.4		341		
4-34		Minimum aisle width (add load length & clearance)		in	mm	230		5,837		229		5,814		229		5,814		229		5,814		
4-35		Outside turning radius		in	mm	195		4,948		192		4,874		192		4,874		192		4,874		
Tier 4F																						
PERFORMANCE	5-1	Travel speed, with/without load		mph	km/h	17	18	27	29	17	18	27	29	17	18	27	29	17	18	27	29	
	5-2-1	Lifting speed, with/without load - 90cc pump		ft/min	m/s	-	-	-	-	-	-	-	-	-	-	-	-	-	-	-	-	
	5-2-2	Lifting speed, with/without load - 111cc pump		ft/min	m/s	-	-	-	-	-	-	-	-	-	-	-	-	-	-	-	-	
	5-2-3	Lifting speed, with/without load - 126cc pump		ft/min	m/s	81	91	0.41	0.46	77	87	0.39	0.44	77	87	0.39	0.44	77	87	0.39	0.44	
	5-3	Lowering speed, with/without load		ft/min	m/s	106	95	0.54	0.48	106	89	0.54	0.45	106	89	0.54	0.45	106	89	0.54	0.45	
	5-5	Drawbar pull - 1 mph (1.6 km/h), with/without load		lb	kN	22,000	23,100	98	103	22,500	23,700	100	105	22,400	23,800	100	106	22,200	23,600	99	105	
	5-6	Drawbar pull - stall, with/without load		lb	kN	24,900	26,000	111	116	25,300	26,600	113	118	25,200	26,600	112	118	25,100	26,500	112	118	
	5-7	Gradeability - 1 mph (1.6 km/h), with/without load		%				35/32				31/33				30/34				28/31		
5-8	Gradeability stall, with load/without load		%				40/32				35/33				34/34				32/31			
Tier 3: Cummins QSB 6.7L																						
PERFORMANCE	5-1	Travel speed, with/without load		mph	km/h	17	18	27	29	17	18	27	29	17	18	27	29	17	18	27	29	
	5-2-1	Lifting speed, with/without load - 90cc pump		ft/min	m/s	-	-	-	-	-	-	-	-	-	-	-	-	-	-	-	-	
	5-2-2	Lifting speed, with/without load - 111cc pump		ft/min	m/s	71	79	0.36	0.40	-	-	-	-	-	-	-	-	-	-	-	-	
	5-2-3	Lifting speed, with/without load - 126cc pump		ft/min	m/s	-	-	-	-	67	87	0.34	0.44	67	87	0.34	0.44	67	87	0.34	0.44	
	5-3	Lowering speed, with/without load		ft/min	m/s	106	94	0.54	0.48	106	89	0.54	0.45	106	89	0.54	0.45	106	89	0.54	0.45	
	5-5	Drawbar pull - 1 mph (1.6 km/h), with/without load		lb	kN	20,800	21,900	93	97	20,400	21,600	91	96	20,300	21,700	90	97	20,100	21,500	89	96	
	5-6	Drawbar pull - stall, with/without load		lb	kN	23,500	24,600	105	109	23,100	24,400	103	109	23,000	24,400	102	109	22,900	24,300	102	108	
	5-7	Gradeability - 1 mph (1.6 km/h), with/without load		%				33/32				28/33				27/34				26/31		
5-8	Gradeability stall, with load/without load		%				38/32				32/33				31/34				29/31			

400XD | H360XD36 | H360XD48 SPECIFICATIONS

			HYSTER				HYSTER				HYSTER						
			H400XD				H360XD36				H360XD48						
GENERAL	1-1	Manufacturer															
	1-2	Model designation		H400XD				H360XD36				H360XD48					
	1-3	Powertrain/drivetrain		Diesel				Diesel				Diesel					
	1-4	Operator type		Seated				Seated				Seated					
	1-5	Rated load capacity	lb	kg	40,000		18,144		36,000		16,329		36,000		16,329		
	1-6	Load center	in	mm	24		610		36		914		48		1,219		
	1-8	Load distance	in	mm	37.0		940		37.0		940		37.0		940		
	1-9	Wheelbase	in	mm	138		3,500		148		3,750		148		3,750		
	WEIGHTS	2-1	Total truck weight without load		lb	kg	45,894		20,817		46,134		20,926		49,827		22,601
2-2		Axle loading with load, front/rear		lb	kg	79,412	6,182	36,021	2,804	76,031	6,103	34,487	2,768	78,779	7,048	35,734	3,197
2-3		Axle loading without load, front/rear		lb	kg	21,991	23,903	9,975	10,842	22,219	23,915	10,078	10,848	22,041	27,786	9,998	12,604
WHEELS	3-1	Tire type		Type		Pneumatic				Pneumatic				Pneumatic			
	3-2	Tire size, front		12.00-20 16PR				12.00-20 16PR				12.00-20 16PR					
	3-3	Tire size, rear		12.00-20 16PR				12.00-20 16PR				12.00-20 16PR					
	3-5	Number of tires, front/rear (X driven)		#		x4/2				x4/2				x4/2			
	3-6	Tread width, front	in	mm	72.6		1,844		72.6		1,844		72.6		1,844		
	3-7	Tread width, rear	in	mm	79.5		2,020		79.5		2,020		79.5		2,020		
	DIMENSIONS	4-1	Mast tilt, forward/back		Degrees		15F/10B				15F/10B				15F/10B		
4-2		Height of mast lowered	in	mm	146		3,703		146		3,703		146		3,703		
4-3		Freelift	in	mm	0		0		0		0		0		0		
4-4		Lift height (top of fork)	in	mm	157		3,984		157		3,984		157		3,984		
4-4-1		Lift height (bottom of fork)	in	mm	153		3,884		153		3,884		153		3,884		
4-5		Height, extended	in	mm	222		5,644		222		5,644		222		5,644		
4-7		Height to top of operator compartment (open cab)	in	mm	121.4		3,084		121.4		3,084		121.4		3,084		
4-7-1		Height, top of operator comp (closed cab)	in	mm	122.4		3,109		122.4		3,109		122.4		3,109		
4-7-2		Height, top of operator comp (closed cab w/ AC)	in	mm	122.4		3,109		122.4		3,109		122.4		3,109		
4-7-3		Height, top of operator comp (closed cab w/ strobe light)	in	mm	126.2		3,205		126.2		3,205		126.2		3,205		
4-7-4		Height, top of operator comp (closed cab w/ work lights)	in	mm	128.3		3,259		128.3		3,259		128.3		3,259		
4-7-5		Height, top of operator comp (closed cab w/ AC & strobe)	in	mm	127.4		3,236		127.4		3,236		127.4		3,236		
4-8		Seat height to seat point index (SIP)	in	mm	75		1,902		75		1,902		75		1,902		
4-19		Overall length	in	mm	307		7,805		317		8,054		317		8,054		
4-20		Length to load face	in	mm	211		5,367		221		5,616		221		5,616		
4-21		Overall width of truck	in	mm	100		2,540		100		2,540		100		2,540		
4-22		Fork dimension	in	mm	3.9/8/96		100/200/2,440		3.9/8/96		100/200/2,440		3.9/8/96		100/200/2,440		
4-23		Fork carriage type	Type		Standard pin type carriage				Standard pin type carriage				Standard pin type carriage				
4-24		Carriage width	in	mm	100		2,540		100		2,540		100		2,540		
4-25-1		Fork spread, min (in-in)	in	mm	2.8		70		2.8		70		2.8		70		
4-25-2		Fork spread, max (out-out)	in	mm	96.1		2,440		96.1		2,440		96.1		2,440		
4-30		Sideshift	in	mm	0		0		0		0		0		0		
4-31		Ground clearance, under mast w/o load	in	mm	8.9		226		8.9		226		8.9		226		
4-32		Ground clearance, center of wheelbase	in	mm	13.4		341		13.4		341		13.4		341		
4-34		Minimum aisle width (add load length & clearance)	in	mm	229		5,814		241		6,124		241		6,124		
4-35		Outside turning radius	in	mm	192		4,874		204		5,184		204		5,184		
Tier 4F																	
PERFORMANCE	5-1	Travel speed, with/without load	mph	km/h	17	18	27	29	17	18	27	29	17	18	27	29	
	5-2-1	Lifting speed, with/without load - 90cc pump	ft/min	m/s	-		-		-		-		-		-		
	5-2-2	Lifting speed, with/without load - 111cc pump	ft/min	m/s	-		-		-		-		-		-		
	5-2-3	Lifting speed, with/without load - 126cc pump	ft/min	m/s	77	87	0.39	0.44	77	87	0.39	0.44	77	87	0.39	0.44	
	5-3	Lowering speed, with/without load	ft/min	m/s	106	89	0.54	0.45	106	89	0.54	0.45	106	89	0.54	0.45	
	5-5	Drawbar pull - 1 mph (1.6 km/h), with/without load	lb	kN	22,300	23,900	99	106	22,400	23,800	100	106	22,300	23,700	99	105	
	5-6	Drawbar pull - stall, with/without load	lb	kN	25,100	26,700	112	119	25,300	26,700	113	119	25,100	26,500	112	118	
	5-7	Gradeability - 1 mph (1.6 km/h), with/without load	%		29/35				31/38				29/36				
5-8	Gradeability stall, with load/without load	%		33/35				35/38				33/36					
Tier 3: Cummins QSB 6.7L																	
PERFORMANCE	5-1	Travel speed, with/without load	mph	km/h	17	18	27	29	17	18	27	29	17	18	27	29	
	5-2-1	Lifting speed, with/without load - 90cc pump	ft/min	m/s	-		-		-		-		-		-		
	5-2-2	Lifting speed, with/without load - 111cc pump	ft/min	m/s	-		-		-		-		-		-		
	5-2-3	Lifting speed, with/without load - 126cc pump	ft/min	m/s	63	87	0.32	0.44	67	87	0.34	0.44	67	87	0.34	0.44	
	5-3	Lowering speed, with/without load	ft/min	m/s	106	89	0.54	0.45	106	89	0.54	0.45	106	89	0.54	0.45	
	5-5	Drawbar pull - 1 mph (1.6 km/h), with/without load	lb	kN	20,200	21,800	90	97	20,400	21,700	91	97	20,200	21,600	90	96	
	5-6	Drawbar pull - stall, with/without load	lb	kN	22,900	24,500	102	109	23,100	24,500	103	109	22,900	24,300	102	108	
	5-7	Gradeability - 1 mph (1.6 km/h), with/without load	%		26/35				28/38				26/36				
5-8	Gradeability stall, with load/without load	%		30/35				32/38				30/36					


POWERTRAINS									
GENERAL	1-1	Manufacturer							
	1-2	Model designation			H360XD(S)36, H280-H360XD(S)48, H400XD				
	1-3	Powertrain/drivetrain			Diesel		Diesel		
ENGINE	7-1	Engine Manufacture/model			Cummins/QSB 6.7L		Cummins/QSB 6.7L		
	7-1a	EPA Tier Compliance			Tier 3/Stage IIIA		Tier 4/Stage IV		
	7-2	Engine power output - rated	hp	kW	156@2300	116@2300	164@2300	122@2300	
	7-2-1	Engine power output - peak	hp	kW	156@2300	116@2300	168@2100	125@2100	
	7-3	Rated speed	rpm		2,300		2,300		
	7-3a	Peak speed	rpm		2,300		2,100		
	7-3-1	Engine torque @ rpm (1/min)	lb-ft	N-m	440@1500	597@1500	540@1500	732@1500	
	7-4	Number of cylinders/displacement	#/in3	#/cm3	6/409	6/6700	6/409	6/6700	
	x	Turbocharger	Type		Wastegate, Water cooled		Variable Geometry, Water cooled		
	7-8	Alternator output	Amps		120		120		
	7-9	Electrical system voltage	V		24		24		
	7-10	Battery voltage/nominal capacity	V/Ah		24/102		24/102		
	8-0	Drive control/transmission	Type		Powershift Transmission		Powershift Transmission		
	DRIVE	8-1	Type of drive unit	Type		Torque Converter		Torque Converter	
		8-2	Transmission manufacturer/type	Type		ZF/3WG161		ZF/3WG161	
8-2-1		Transmission speeds forward/reverse	#		3/3		3/3		
8-3		Wheel drive/drive axle manufacturer/type	Type		Kessler/D81		Kessler/D81		
8-4		Service brake	Type		Oil immersed (wet) disc		Oil immersed (wet) disc		
8-5		Parking brake	Type		Spring apply, dry disc on drive axle		Spring apply, dry disc on drive axle		
MISC	10-1	Operating pressure for attachments	psi	MPa	3,263	23	3,263	23	
	10-2	Oil flow for attachments	gpm	l/m	26.4	100	26.4	100	
	10-3	Hydraulic oil tank, capacity	gal	l	32	121	32	121	
	10-4	Fuel tank, capacity	gal	l	40	151	40	151	
	10-4-1	DEF tank, capacity	gal	l	N/A	N/A	5	19	
	10-5	Steering design	Type		Hydraulic power steering		Hydraulic power steering		
	10-6	Number of steering rotation	#		5		5		
	10-8	Towing coupling, type DIN	Type		Pin		Pin		

NOTES:

Specifications are affected by the condition of the vehicle and how it is equipped, as well as the nature and condition of the operating area. Inform your dealer of the nature and condition of the intended operating area when purchasing your Hyster® truck.

All capacities are according to ANSI B56.

Specification data is based on VDI 2198.

 Safety: This truck conforms to the current ANSI requirements.

NOTICE:

Care must be exercised when handling elevated loads. Operators must be trained and must read, understand and follow the instructions contained in the Operating Manual.

All values are nominal values and they are subject to tolerances. For further information, please contact the manufacturer.

Hyster products are subject to change without notice.

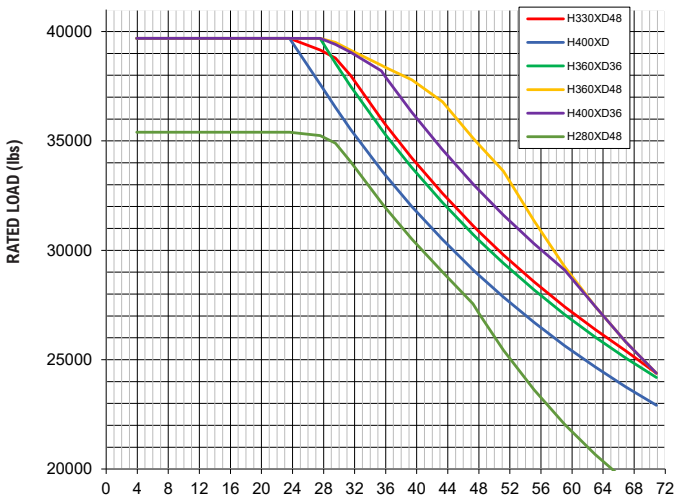
Lift trucks illustrated may feature optional equipment. Values may vary with alternative configurations.

CERTIFICATION: Hyster lift trucks meet the design and construction requirements of B56.1-1969, per OSHA Section 1910.178(a)(2), and also comply with the B56.1 revision in effect at time of manufacture. Certification of compliance with the applicable ANSI standards appears on the lift truck. Performance specifications are for a truck equipped as described under Standard Equipment on this Technical Guide. Performance specifications are affected by the condition of the vehicle and how it is equipped, as well as by the nature, condition of the operating area, proper service and maintenance of the vehicle. If these specifications are critical, the proposed application should be discussed with your dealer.

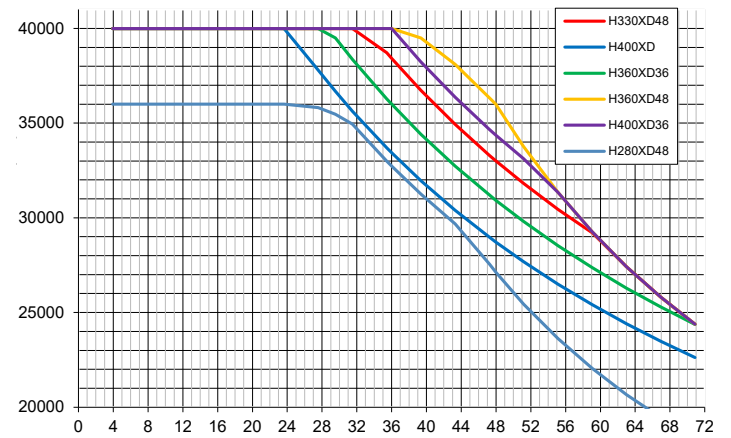
NOTE: Specifications, unless otherwise listed, are for a standard truck without optional equipment.

CAPACITY RATINGS

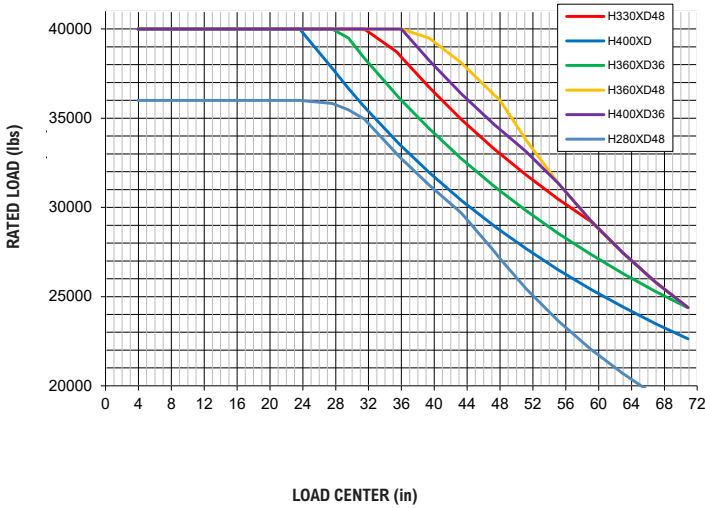
RATED LOAD VS. LOAD CENTER | DF-SS-FP CARRIAGE | U.S. CUSTOMARY



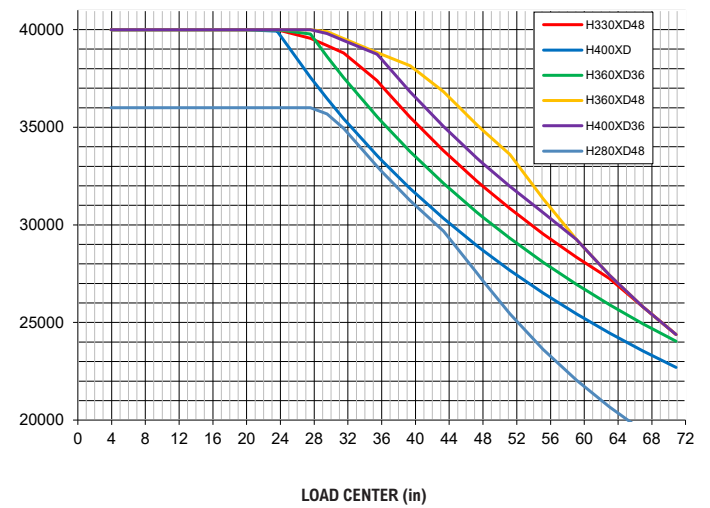
RATED LOAD VS. LOAD CENTER | STD PIN TYPE | U.S. CUSTOMARY



RATED LOAD VS. LOAD CENTER | STD PIN TYPE WITH FP | U.S. CUSTOMARY



RATED LOAD VS. LOAD CENTER | SIDE SHIFT PIN TYPE WITH FP | U.S. CUSTOMARY



FEATURES AND OPTIONS

PERFORMANCE	STD	OPT
Cummins QSB 6.7L Tier 4F diesel engine 164 hp (122 kW)*	x	
Cummins QSB 6.7L Tier 3 diesel engine 156 hp (116 kW)*	x	
Tier 4/Stage IV compliant	x	
Tier 3/Stage IIIA compliant	x	
Wastegate turbocharger, water cooled - Tier 3/Stage IIIA	x	
Variable geometry turbocharger, water cooled - Tier 4	x	
Delayed engine shutdown for turbo cooldown		x
On-demand cooling fan	x	
120 amp alternator	x	
Performance modes selectable in Integrated Performance Display	x	
Powertrain protection system	x	
Heavy duty air intake	x	
Heavy duty air intake (raised)		x
Low mount exhaust (below chassis)	x	
High mount exhaust		x
ZF Transmission WG161 3-speeds fwd/3-speeds reverse auto-shifting	x	
Kessler D81 drive axle with wet disc brakes	x	
DRIVE	STD	OPT
Travel speed limiter - unconditional and customer adjustable		x
Travel speed limiter - loaded (adjustable)		x
12.00 - 20 20PR Trelleborg Pneumatic Bias Ply drive and steer tires	x	
12.00 - R20 Michelin XZM Radial drive and steer tires		x
12.00 - R20 Trelleborg Radial drive and steer tires		x
12.00 - 20 Pneumatic Shaped Solid drive and steer tires		x
LIFT	STD	OPT
111cc Dual Pump Hydraulic System (H280XD48)	x	
126cc Dual Pump Hydraulic System	x	
On-Demand Load Sensing Hydraulic System	x	
Automatic throttle-up when lifting (in neutral or inching)	x	
2-stage non free lift mast	x	
2-stage full free lift mast		x
3-stage full free lift mast		x
Mast tilt - 6° forward/10° back		x
Mast tilt - 10.5° forward/12° back		x
Mast tilt - 15° forward/10° back	x	
Mast Tilt Indicator - mechanical		x
Hydraulic Accumulator		x
Pressure compensated lowering		x
Hydraulic system temperature protection with performance de-rate		x
HANDLING	STD	OPT
100" (2540mm) pin type carriage with mechanical fork locks	x	
100" (2540mm) pin type carriage with individual fork positioner		x
100" (2540mm) pin type apron-style sideshift carriage		x
100" (2540mm) pin type apron-style sideshift carriage with individual fork positioner		x
100" (2540mm) dual function sideshift carriage with individual fork positioner for integral forks		x
100" (2540mm) dual function sideshift carriage with individual fork positioner for quick disconnect forks		x
100" (2540mm) dual function sideshift carriage with simultaneous and individual fork positioner for quick disconnect forks		x
100" (2540mm) dual function sideshift carriage with simultaneous and individual fork positioner for integral forks		x
100" (2540mm) dual function sideshift carriage with simultaneous fork positioner for quick disconnect forks		x
96" (2440mm) length pin type forks	x	
96" (2440mm) length hook type forks		x
96" (2440mm) length integral forks		x

ERGONOMICS	STD	OPT
Open operator compartment (without doors & screens)	x	
Enclosed operator cabin		x
Manual tilt operator compartment for service	x	
Powered tilt operator compartment for service		x
Isolated cabin mounting for low noise and vibration	x	
Operator presence system	x	
Mechanical suspension seat	x	
Air suspension seat		x
Deluxe air suspension seat		x
Low backrest seat	x	
High backrest seat		x
Armrest on left side	x	
Cloth seat cover		x
Vinyl seat cover	x	
Seat heating		x
Seat ventilation		x
2-point high visibility seatbelt	x	
Lateral seat sliding mechanism		x
Floor mat	x	
Coat hook	x	
Front, top and rear wipers		x
"H"-pattern front wiper (enclosed operator cabin)		x
"I"-pattern front wiper (enclosed operator cabin)		x
Laminated glass operator compartment front window		x
Tinted operator compartment windows (doors, rear and top window)		x
Tinted operator compartment top window		x
Lexan top window		x
Plexiglass shield in front of front window		x
Wire mesh installed on top of operator compartment		x
Vertical steel bar front window guard		x
Operator shield wire mesh		x
7" Integrated Performance Display	x	
Touchpoint™ mini levers hydraulic control integrated in control arm	x	
Joystick hydraulic control integrated in control arm		x
Steering wheel without spinner knob	x	
Steering wheel with spinner knob		x
Directional control lever on steering column	x	
Hyster Monotrol® pedal directional control		x
Directional control on mini-levers or joystick		x
Park brake - push button applied	x	
Park brake - automatically applied		x
Heater with adjustable speed fan (enclosed operator cabin)	x	
Telescoping & tilting steering column	x	
USB outlet inside armrest	x	
24-12 volt DC converter with 1 socket and 2 USB outlets	x	
24-12 volt DC converter with 2 sockets and 2 USB outlets		x
Air conditioning		x
Automatic climate control		x
Reading light		x
Sun shades on top and rear		x
Sun visors front window		x
Trainer seat		x
Recirculation fan		x
Additional recirculation fan		x
Accessory mounting bracket on cab front right pillar		x
Document holder on cab front right pillar		x
Heated top- and/or rear window		x
Radio preparation set-up (wiring, two speakers and antenna)		x

*Standard or optional in select markets or on select models. Other options available through Special Products Engineering Department (SPED). Contact Hyster for details.

FEATURES AND OPTIONS


VISIBILITY	STD	OPT
Steel bars on top of cab (open operator compartment)	x	
Top window with armored glass (enclosed operator cabin)	x	
Steel bars under armored glass top window (enclosed operator cabin)		x
Interior wide angle mirrors	x	
Exterior mirrors mounted to cab		x
Rear view camera system		x
Radar object detection system		x
Halogen work lights		x
High Performance LED work lights		x
Two head lights mounted on front fenders		x
Four mast mounted work lights		x
Four cabin mounted work lights		x
Two rearward work lights mounted on the cabin		x
LED stop/tail/brake lights	x	
Turn signals, hazard & marker lights (LED)		x
OPERATION	STD	OPT
Air horn 112 dBA		x
Electric horn 105 dBA	x	
Visible alarm – Amber strobe light, ignition activated		x
Audible alarm – reverse direction activated 82–102 dB(A), self-adjusting	x	
Audible alarm – reverse direction white noise		x
Forward/reverse motion alarm		x
Blue LED spotlight – rear/front and rear		x
Air conditioning shut-off with open door		x
Automatic engine shutdown with timer		x
Lockable battery disconnect switch		x
Battery jump start connector (NATO plug)		x
Truck start with key switch and start button	x	
Operator password (display) for truck start	x	
Seatbelt interlock for truck start		x
Power distribution group with fuses	x	
Fuses below 30 amps replaced by electric circuit breakers		x
Non-lockable fuel cap	x	

OPERATION (continued)	STD	OPT
Lockable fuel cap		x
Fuel strainer in fuel filler neck		x
Hyster Tracker™ wireless asset management system	x	
Hyster Tracker™ wireless asset management - access/verification		x
Hyster Tracker™ wireless asset management - monitoring		x
Auto greasing system for base truck		x
24 volt electrical system	x	
Engine block heater 110 or 240 volt		x
Steer wheel lug nut protection		x
Front mud flaps		x
Rear mud flaps		x
Front and rear mud guards		x
Lifting eyes - 2 front and 2 rear		x
Wire mesh and plates belly pan		x
APPEARANCE	STD	OPT
Second capacity plate		x
Hyster yellow paint base truck	x	
Special paint base truck		x
Operator compartment special paint (complete cab)		x
Hazard warning striping on counterweight		x
SUPPLEMENTAL	STD	OPT
Literature package	x	
Operator's manual	x	
CE certification		x
U.L. Label - Standard Construction	x	
Warranty: 12 months /2,000 hours parts & labor manufacturer's warranty*	x	
Warranty: 12 months/2,000 hours parts manufacturer's warranty*	x	

*Standard or optional in select markets or on select models. Other options available through Special Products Engineering Department (SPED). Contact Hyster for details.



Hyster Company
P.O. Box 7006
Greenville, North Carolina
27835-7006

© Hyster Company. 2023, all rights reserved. Hyster and  are trademarks of Hyster-Yale Group, Inc.

Hyster products are subject to change without notice. Trucks may be shown with optional equipment and/or features not available in all regions.