



FACTORY INSTALLED ROTATOR ATTACHMENTS

Why settle on just any rotator when you can have one designed and engineered by a leading attachment manufacturer like Bolzoni Auramo? And now, with the factory installed attachment option, you can hit the ground running at the time of delivery with a factory-fitted rotator that has been certified and tested prior to leaving the Hyster® manufacturing facility.

WHY FACTORY FIT?

- Integrated to help streamline the ordering process
- Factory installed, certified and tested prior to delivery
- Backed by the trusted Hyster® brand and nationwide dealer network

AVAILABLE ON THE FOLLOWING MODELS:

- S40-70FT (all capacities within series)
- S50CT2
- H40-70FT (all capacities within series)
- H40XT, H60XT



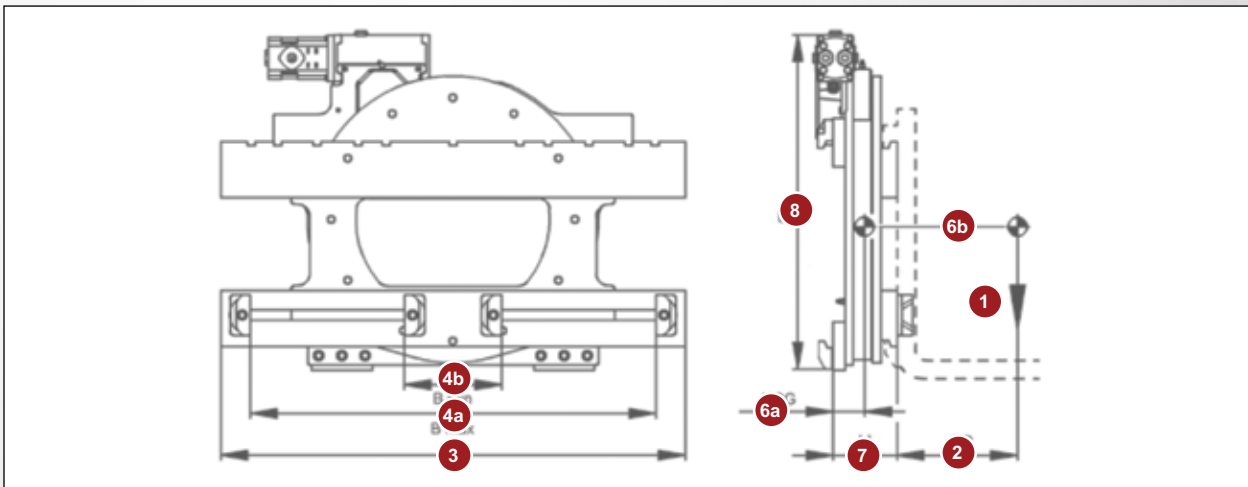
APPLICATIONS AND SPECIFICATIONS

Bolzoni Auramo rotator attachments are specifically designed for applications where working cycles require load rotation or emptying of containers.

- 360 degree and 180 degree rotation
- Fast and high-torque rotation with continuous rotation both ways
- Fork carriage is welded to the rotating frame for greater rigidity
- Side support fork arm for added strength
- Open center design and minimized dimensions provide optimal visibility
- Motor gear box on the right (driver side) provides optimal visibility

TYPICAL APPLICATIONS

- Agriculture
- Food Processing
- Metals
- Paper & Packaging
- Chemicals & Plastics
- Auto Parts Manufacturing




Circled dimensions correspond to the line numbers in the General Specifications chart.

			RC2010A	RC2510A	RC3511B
1	Capacity	lb (kg)	3600 (2000)	4500 (2500)	6300 (3500)
2	Load center	in (mm)	24 (600)	20 (500)	24 (600)
3	Fork carriage width	in (mm)	38.6 (980)	38.6 (980)	45.3 (1150)
4a	Fork opening (to outside of fork)	in (mm)	34 (866)	34 (866)	39.4 (1001)
4b	Fork opening (to inside of fork)	in (mm)	9.6 (240)	7.1 (178)	9.6 (245)
5	Weight	lb (kg)	375 (189)	404 (183)	678 (307)
6	Horizontal center of gravity	in (mm)	3.0 (73)	3.0 (73)	3.3 (86)
6b	Vertical center of gravity	in (mm)	11.0 (275)	11.2 (285)	13.3 (323)
7	Thickness	in (mm)	5.6 (142)	5.6 (142)	6.3 (160)
8	Height	in (mm)	28.7 (729)	28.5 (722)	32.8 (835)
9	Max torque	in/lbs	54000	73,000	107000
10	Rotation speed	RPM	4.7	4.4	5.8
11	Mounting class	ISO 2328	2	2A	3



CONTACT YOUR HYSTER DEALER TO LEARN MORE OR VISIT WWW.HYSTER.COM

Hyster, , STRONG PARTNERS. TOUGH TRUCKS. and Bolzoni Auramo are registered trademarks in the United States and certain other jurisdictions. Hyster products are subject to change without notice. © 2021 Hyster Company. All rights reserved.