



[WWW.HYSTER.COM](http://WWW.HYSTER.COM)

# ELECTRIC COUNTERBALANCED FORKLIFT

## PRODUCT BROCHURE

# J2.0-3.5XTLG



# RELIABILITY AND DURABILITY

---

- Proven and tested structural design is ideal for indoor and outdoor working conditions.
- Intensive environmental testing enables reliability and durability.
- Lithium battery:
  - Side charging minimises need to open battery compartment.
  - Automatic heating function manages temperature recovery during discharge and before charging.



# ERGONOMICS AND COMFORT

---

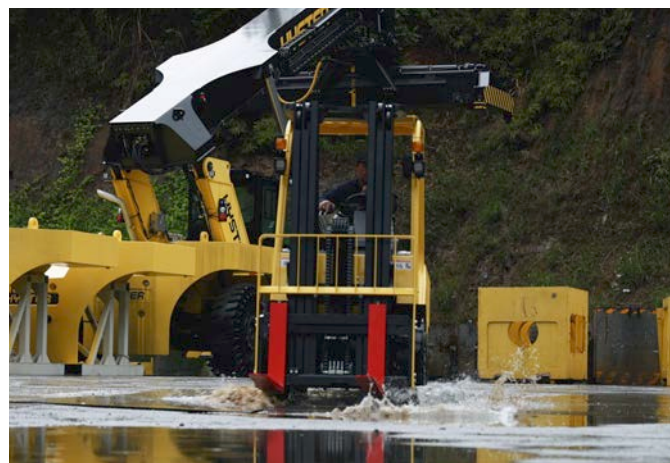
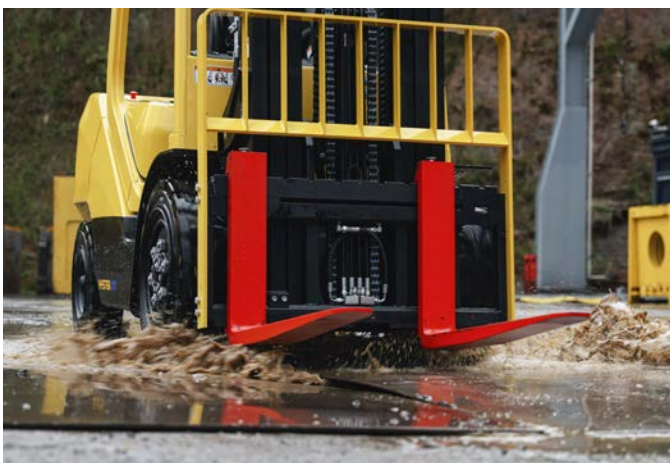
- Ergonomic design and optimized operator compartment improves driving experience.
- Multiple seat options to suit most operator sizes.
- Informative colour display including performance mode settings.
- Wide view mast provides good forward visibility.
- Large tyre size and high ground clearance provides optimal performance on uneven ground conditions.



# HIGH EFFICIENCY AND PERFORMANCE

---

- High efficiency permanent magnet motor and controller system:
  - Provides up to 95% working efficiency.
  - Reduces energy consumption by 20%.
  - IPX4 waterproof rating.
  - Enables continuous operation in wet conditions.
- BMS and controller with leakage detection system.
- Permanent magnet synchronous motor delivers high efficiency.



# OTHER FEATURES

---

- Standard curve deceleration
- Standard energy saving bright LED lights
- Standard USB charge ports
- Standard operator presence system
- Optional dual wheels
- Optional wet brake axle
- Optional automatic park brake
- Optional telemetry
- Optional minilevers



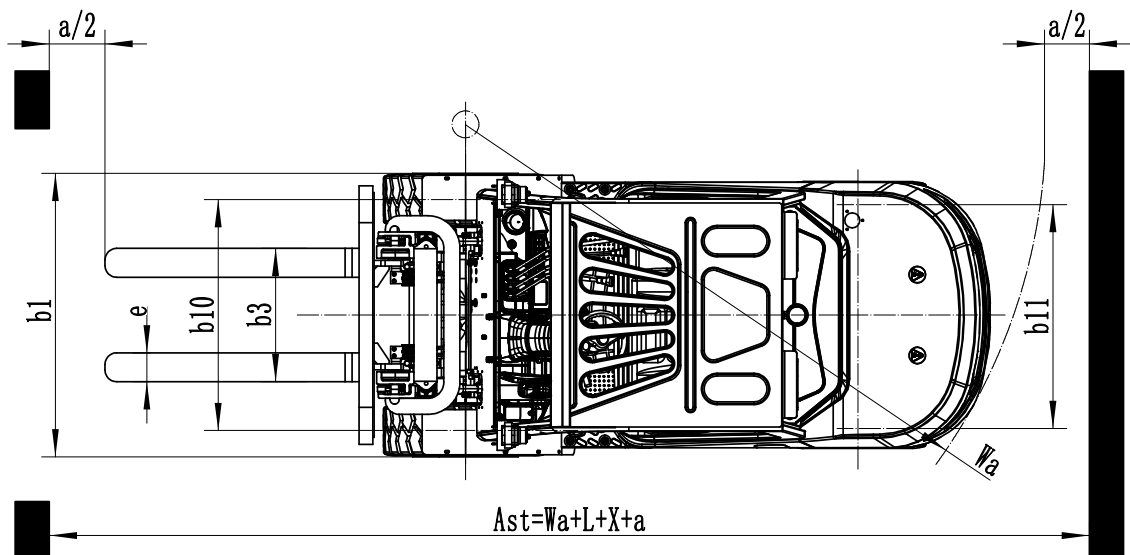
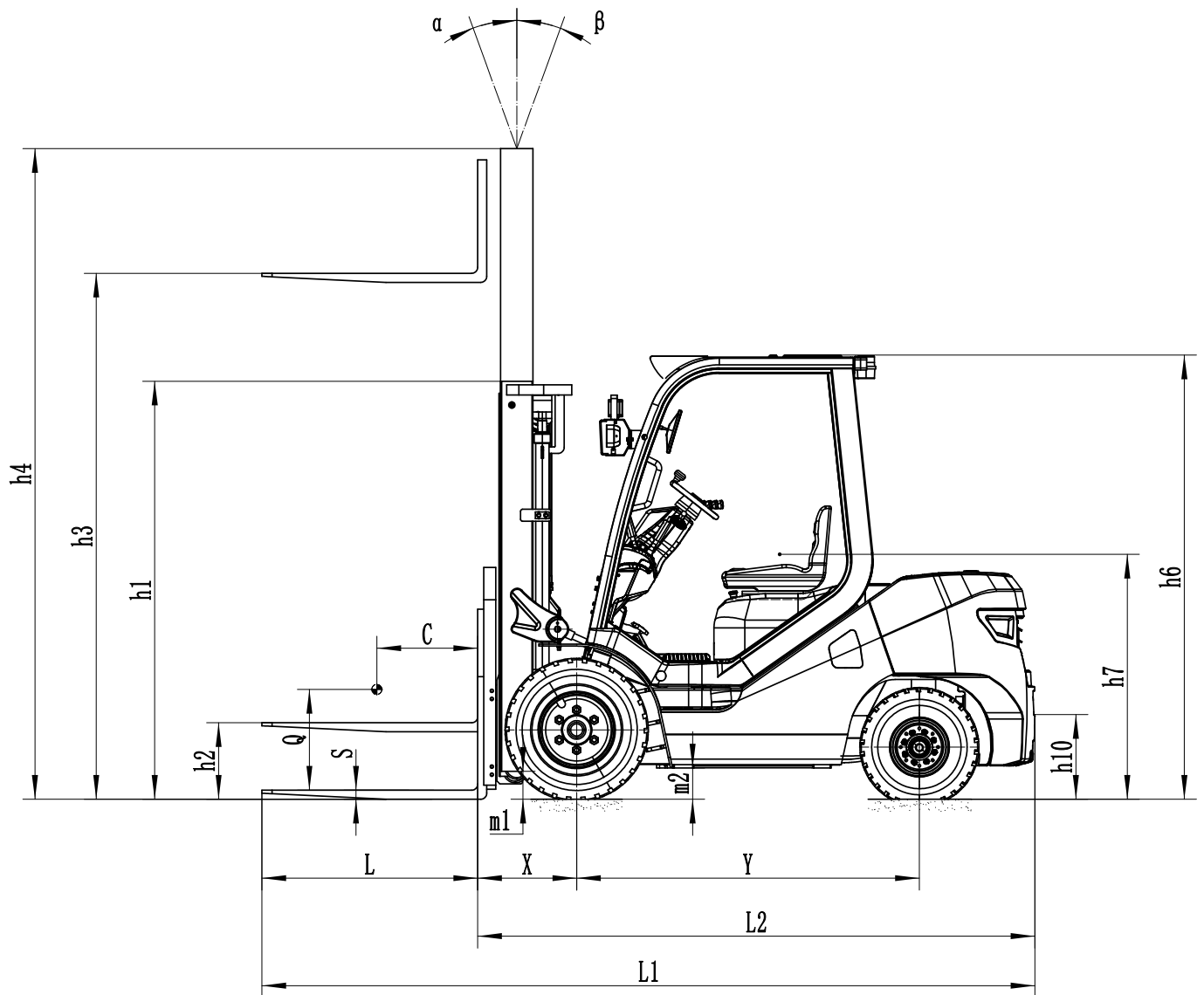
# J2.0-2.5XTLG SPECIFICATIONS

|                      |                 | Hyster  |  |              |              |              |              |      |
|----------------------|-----------------|---|--|--------------|--------------|--------------|--------------|------|
|                      |                 | J2.0XTLG  |  | J2.5XTLG     |              |              |              |      |
| DISTINGUISHING MARKS | 1.1             | Manufacturer  | Hyster                                       |              |              |              |              |      |
|                      | 1.2             | Model designation   | J2.0XTLG                                     |              | J2.5XTLG     |              |              |      |
|                      | 1.3             | Drive: electric(battery or mains), diesel, petrol, fuel gas     | Electric                                     |              |              |              |              |      |
|                      | 1.4             | Operator type: hand, pedestrian, standing, seated, order-picker | Seat   |              |              |              |              |      |
|                      | 1.5             | Rated capacity/rated load                                       | Q (kg)                                       | 2000         | 2500         |              |              |      |
|                      | 1.6             | Load centre distance  | c (mm)                                       | 500          |              |              |              |      |
|                      | 1.8             | Load distance, centre of drive axle to fork                     | x (mm)                                       | 476          | 476          |              |              |      |
|                      | 1.9             | Wheelbase (with mast vertical)                                  | y (mm)                                       | 1600         |              |              |              |      |
|                      | WEIGHTS         | 2.1   | Service weight                               | kg           | 3515         | 3645         | 3775         | 3905 |
| 2.2                  |                 | Axle loading, laden front/rear                                  | kg   | 4865/650     | 4980/665     | 5535/740     | 5650/755     |      |
| 2.3                  |                 | Axle loading, unladen front/rear                                | kg   | 1355/2160    | 1400/2245    | 1470/2305    | 1520/2385    |      |
| TYRES/CHASSIS        | 3.1             | Tyres: Solid rubber, superelastic, pneumatic, polyurethane      | Pneumatic                                    |              |              |              |              |      |
|                      | 3.2             | Tyre size, front  | 7.00-12-12PR                                 |              |              |              |              |      |
|                      | 3.3             | Tyre size, rear   | 6.00-9-10PR                                  |              |              |              |              |      |
|                      | 3.5             | Wheels, number front/rear                                       | 2/2  |              |              |              |              |      |
|                      | 3.6             | Tread, front  | b <sub>10</sub> (mm)                         | 970          |              |              |              |      |
|                      | 3.7             | Tread, rear   | b <sub>11</sub> (mm)                         | 980          |              |              |              |      |
|                      | DIMENSIONS      | 4.1   | Tilt of mast/fork carriage, forward/backward | α /β (°)     | 6/12         |              |              |      |
| 4.2                  |                 | Height, mast lowered  | h <sub>1</sub> (mm)                          | 2010         |              |              |              |      |
| 4.3                  |                 | Free lift   | h <sub>2</sub> (mm)                          | 160          |              |              |              |      |
| 4.4                  |                 | Lift  | h <sub>3</sub> (mm)                          | 3000         |              |              |              |      |
| 4.5                  |                 | Height, mast extended   | h <sub>4</sub> (mm)                          | 3990         |              |              |              |      |
| 4.7                  |                 | Height of overhead guard (cabin)                                | h <sub>e</sub> (mm)                          | 2180         |              |              |              |      |
| 4.8                  |                 | Seat height/stand height  | h <sub>r</sub> (mm)                          | 1190         |              |              |              |      |
| 4.12                 |                 | Towing coupling height  | h <sub>10</sub> (mm)                         | 250          |              |              |              |      |
| 4.19                 |                 | Overall length  | l <sub>1</sub> (mm)                          | 3630         | 3692         |              |              |      |
| 4.20                 |                 | Length to face of forks   | l <sub>2</sub> (mm)                          | 2560         | 2622         |              |              |      |
| 4.21                 |                 | Overall width   | b <sub>1</sub> (mm)                          | 1160         |              |              |              |      |
| 4.22                 |                 | Fork dimensions ISO2331   | s/e/l (mm)                                   | 40/122/1070  |              |              |              |      |
| 4.23                 |                 | Fork carriage ISO 2328. Class/type, A/B                         |  | IIA          |              |              |              |      |
| 4.24                 |                 | Fork carriage width   | b <sub>3</sub> (mm)                          | 1040         |              |              |              |      |
| 4.31                 |                 | Ground clearance, laden, below mast                             | m <sub>1</sub> (mm)                          | 125          |              |              |              |      |
| 4.32                 |                 | Ground clearance, centre of wheelbase                           | m <sub>2</sub> (mm)                          | 130          |              |              |              |      |
| 4.33                 |                 | Load dimension b <sub>12</sub> x l <sub>6</sub> crossways       | b <sub>12</sub> x l <sub>6</sub> (mm)        | 1000*1000    |              |              |              |      |
| 4.34.1               |                 | Aisle width with pallets 1000mm x 1200mm crossways              | A <sub>st</sub> (mm)                         | 4172         | 4226         |              |              |      |
| 4.35                 |                 | Turning radius  | W <sub>a</sub> (mm)                          | 2290         | 2350         |              |              |      |
| 4.36                 |                 | Inner turning radius  | b <sub>13</sub> (mm)                         | 745          |              |              |              |      |
| PERFORMANCE DATA     | 5.1             | Travel speed, laden/unladen                                     | km/h   | 15/15        | 19/19        | 15/15        | 19/19        |      |
|                      | 5.1.1           | Travel speed, laden/unladen, backwards                          | km/h   | 12/12        | 16/16        | 12/12        | 16/16        |      |
|                      | 5.2             | Lifting speed, laden/unladen                                    | mm/s   | 400/430      | 510/540      | 400/430      | 510/540      |      |
|                      | 5.3             | Lowering speed laden/unladen                                    | mm/s   | 420/500      |              |              |              |      |
|                      | 5.5             | Drawbar pull laden/unladen                                      | N  | 16000/13000  | 19000/15000  | 17000/15000  | 23000/16000  |      |
|                      | 5.8             | Maximum gradeability, laden/unladen                             | %  | 15/15        | 20/20        | 15/15        | 20/20        |      |
|                      | 5.9             | Acceleration time, laden/unladen 15m                            | sec  | 5.6/5.5      |              |              |              |      |
|                      | 5.10            | Service brake   |  | Hydraulic    |              |              |              |      |
|                      | ELECTRIC-ENGINE | 6.1   | Drive motor rating S2 60 min                 | Kw           | 15           | 21.6         | 15           | 21.6 |
|                      |                 | 6.2   | Lift motor rating at S3 15 %                 | Kw           | 15           | 22.6         | 15           | 22.6 |
| 6.3                  |                 | Battery according to DIN 43531/35/36 A, B, C, no                |  | no           |              |              |              |      |
| 6.4                  |                 | Battery voltage/nominal capacity K5                             | (V)/(Ah)                                     | 115.2V/228Ah | 153.6V/228Ah | 115.2V/228Ah | 153.6V/228Ah |      |
| 6.5                  |                 | Battery weight  | kg   | 235          | 330          | 235          | 330          |      |
| 6.6                  |                 | Energy consumption according to VDI cycle                       | kWh/h  | 6.32         | 7            | 6.32         | 7            |      |
| 6.7                  |                 | Turnover output   | t/h  | 180          | 210          | 180          | 210          |      |
| 6.8                  |                 | Energy consumption at turnover output                           | kWh in 1 h                                   | 7.76         | 7.14         | 7.76         | 7.14         |      |
| ADDITIONAL DATA      | 8.1             | Type of drive unit  |  | PM AC        |              |              |              |      |
|                      | 10.1            | Operating pressure for attachments                              | bar  | 140          |              |              |              |      |
|                      | 10.2            | Oil volume for attachments                                      | l/min  | 64           |              |              |              |      |
|                      | 10.7            | Sound pressure level at the driver's seat                       | dB (A)                                       | 64           | 66           | 64           | 66           |      |
|                      | 10.7.1          | Sound power level during the workcycle                          | dB (A)                                       | 82           | 81           | 82           | 81           |      |
|                      | 10.8            | Towing coupling, type DIN                                       |  | PIN          |              |              |              |      |

# J3.0-3.5XTLG SPECIFICATIONS

|                      |                      | Hyster  |  |                      |              |              |              |      |
|----------------------|----------------------|---|--|----------------------|--------------|--------------|--------------|------|
|                      |                      | J3.0XTLG  |  | J3.5XTLG             |              |              |              |      |
| DISTINGUISHING MARKS | 1.1                  | Manufacturer  | Hyster                                       |                      |              |              |              |      |
|                      | 1.2                  | Model designation   | J3.0XTLG                                     |                      | J3.5XTLG     |              |              |      |
|                      | 1.3                  | Drive: electric(battery or mains), diesel, petrol, fuel gas     | Electric                                     |                      |              |              |              |      |
|                      | 1.4                  | Operator type: hand, pedestrian, standing, seated, order-picker | Seat   |                      |              |              |              |      |
|                      | 1.5                  | Rated capacity/rated load                                       | Q (kg)                                       | 3000                 | 3500         |              |              |      |
|                      | 1.6                  | Load centre distance  | c (mm)                                       | 500                  |              |              |              |      |
|                      | 1.8                  | Load distance, centre of drive axle to fork                     | x (mm)                                       | 491                  | 510          |              |              |      |
|                      | 1.9                  | Wheelbase (with mast vertical)                                  | y (mm)                                       | 1700                 |              |              |              |      |
|                      | WEIGHTS              | 2.1   | Service weight                               | kg                   | 4275         | 4330         | 4675         | 4730 |
| 2.2                  |                      | Axle loading, laden front/rear                                  | kg   | 6416/859             | 6465/865     | 7210/965     | 7260/970     |      |
| 2.3                  |                      | Axle loading, unladen front/rear                                | kg   | 1710/2565            | 1732/2598    | 1846/2829    | 1868/2862    |      |
| TYRES/CHASSIS        | 3.1                  | Tyres: Solid rubber, superelastic, pneumatic, polyurethane      | Pneumatic                                    |                      |              |              |              |      |
|                      | 3.2                  | Tyre size, front  | 28x9-15-14PR                                 |                      |              |              |              |      |
|                      | 3.3                  | Tyre size, rear   | 6.50-10-10PR                                 |                      |              |              |              |      |
|                      | 3.5                  | Wheels, number front/rear                                       | 2/2  |                      |              |              |              |      |
|                      | 3.6                  | Tread, front  | b10 (mm)                                     | 1000                 |              |              |              |      |
|                      | 3.7                  | Tread, rear   | b11 (mm)                                     | 970                  |              |              |              |      |
|                      | DIMENSIONS           | 4.1   | Tilt of mast/fork carriage, forward/backward | $\alpha / \beta$ (°) | 6/12         |              |              |      |
| 4.2                  |                      | Height, mast lowered  | h1 (mm)                                      | 2150                 |              |              |              |      |
| 4.3                  |                      | Free lift   | h2 (mm)                                      | 165                  | 170          |              |              |      |
| 4.4                  |                      | Lift  | h3 (mm)                                      | 3000                 |              |              |              |      |
| 4.5                  |                      | Height, mast extended   | h4 (mm)                                      | 4100                 |              |              |              |      |
| 4.7                  |                      | Height of overhead guard (cabin)                                | he (mm)                                      | 2205                 |              |              |              |      |
| 4.8                  |                      | Seat height/stand height  | hr (mm)                                      | 1215                 |              |              |              |      |
| 4.12                 |                      | Towing coupling height  | h10 (mm)                                     | 260                  |              |              |              |      |
| 4.19                 |                      | Overall length  | l1 (mm)                                      | 3763                 | 3853         |              |              |      |
| 4.20                 |                      | Length to face of forks   | l2 (mm)                                      | 2693                 | 2783         |              |              |      |
| 4.21                 |                      | Overall width   | b1 (mm)                                      | 1228                 |              |              |              |      |
| 4.22                 |                      | Fork dimensions ISO2331   | s/e/l (mm)                                   | 45/122/1070          | 50/122/1070  |              |              |      |
| 4.23                 |                      | Fork carriage ISO 2328. Class/type, A/B                         |  | IIA                  |              |              |              |      |
| 4.24                 |                      | Fork carriage width   | b3 (mm)                                      | 1100                 |              |              |              |      |
| 4.31                 |                      | Ground clearance, laden, below mast                             | m1 (mm)                                      | 140                  |              |              |              |      |
| 4.32                 |                      | Ground clearance, centre of wheelbase                           | m2 (mm)                                      | 155                  |              |              |              |      |
| 4.33                 |                      | Load dimension b12 x l6 crossways                               | b12 x l6 (mm)                                | 1000*1000            |              |              |              |      |
| 4.34.1               |                      | Aisle width with pallets 1000mm x 1200mm crossways              | Ast (mm)                                     | 4336                 | 4425         |              |              |      |
| 4.35                 |                      | Turning radius  | Wa (mm)                                      | 2430                 | 2500         |              |              |      |
| 4.36                 | Inner turning radius | b13 (mm)  | 823  |                      |              |              |              |      |
| PERFORMANCE DATA     | 5.1                  | Travel speed, laden/unladen                                     | km/h   | 15/15                | 19/19        | 15/15        | 19/19        |      |
|                      | 5.1.1                | Travel speed, laden/unladen, backwards                          | km/h   | 12/12                | 16/16        | 12/12        | 16/16        |      |
|                      | 5.2                  | Lifting speed, laden/unladen                                    | mm/s   | 350/380              | 430/500      | 350/380      | 430/500      |      |
|                      | 5.3                  | Lowering speed laden/unladen                                    | mm/s   | 420/500              |              |              |              |      |
|                      | 5.5                  | Drawbar pull laden/unladen                                      | N  | 19000/16000          | 26000/17000  | 19000/16000  | 27000/17000  |      |
|                      | 5.8                  | Maximum gradeability, laden/unladen                             | %  | 15/15                | 20/20        | 15/15        | 20/20        |      |
|                      | 5.9                  | Acceleration time, laden/unladen 15m                            | sec  | 5.6/5.5              |              |              |              |      |
|                      | 5.10                 | Service brake   |  | Hydraulic            |              |              |              |      |
|                      | ELECTRIC-ENGINE      | 6.1   | Drive motor rating S2 60 min                 | Kw                   | 15           | 21.6         | 15           | 21.6 |
|                      |                      | 6.2   | Lift motor rating at S3 15 %                 | Kw                   | 15           | 22.6         | 15           | 22.6 |
| 6.3                  |                      | Battery according to DIN 43531/35/36 A, B, C, no                |  | no                   |              |              |              |      |
| 6.4                  |                      | Battery voltage/nominal capacity K5                             | (V)/(Ah)                                     | 115.2V/228Ah         | 153.6V/228Ah | 115.2V/228Ah | 153.6V/228Ah |      |
| 6.5                  |                      | Battery weight  | kg   | 235                  | 330          | 235          | 330          |      |
| 6.6                  |                      | Energy consumption according to VDI cycle                       | kWh/h  | 6.32                 | 7            | 6.32         | 7            |      |
| 6.7                  |                      | Turnover output   | t/h  | 180                  | 210          | 180          | 210          |      |
| 6.8                  |                      | Energy consumption at turnover output                           | kWh in 1 h                                   | 7.76                 | 7.14         | 7.76         | 7.14         |      |
| 8.1                  | Type of drive unit   |   | PM AC  |                      |              |              |              |      |
| ADDITIONAL DATA      | 10.1                 | Operating pressure for attachments                              | bar  | 140                  |              |              |              |      |
|                      | 10.2                 | Oil volume for attachments                                      | l/min  | 64                   |              |              |              |      |
|                      | 10.7                 | Sound pressure level at the driver's seat                       | dB (A)                                       | 64                   | 66           | 64           | 66           |      |
|                      | 10.7.1               | Sound power level during the workcycle                          | dB (A)                                       | 82                   | 81           | 82           | 81           |      |
|                      | 10.8                 | Towing coupling, type DIN                                       |  | PIN                  |              |              |              |      |

# TRUCK DIMENSIONS



| J2.0XTLG MAST DIMENSIONS                    |              |           |                |                                     |                                  |             |          |                            |           |                 |           |
|---|--------------|-----------|----------------|-------------------------------------|----------------------------------|-------------|----------|----------------------------|-----------|-----------------|-----------|
| Maximum Fork Height                         | Mast Tilt    |           | Lowered Height | Overall Extended Height without LBR | Overall Extended Height with LBR | Free Lift   |          | J2.0XTLG without sideshift |           |                 |           |
|   | Forward Tilt | Back Tilt |                |                                     |                                  | Without LBR | With LBR | Solid Tyres                |           | Pneumatic Tyres |           |
|   |              |           |                |                                     |                                  |             |          | 500 mm LC                  | 600 mm LC | 500 mm LC       | 600 mm LC |
| (mm)  | (°)          | (°)       | (mm)           | (mm)                                | (mm)                             | (mm)        | (kg)     | (kg)                       | (kg)      | (kg)            |           |
| <b>2-Stage Limited Free-Lift (LFL) Mast</b> |              |           |                |                                     |                                  |             |          |                            |           |                 |           |
| 3000  | 6            | 12        | 2010           | 3575                                | 3990                             | 160         | 160      | 2000                       | 1800      | 2000            | 1800      |
| 4000  | 6            | 6         | 2560           | 4575                                | 4990                             | 160         | 160      | 2000                       | 1800      | 2000            | 1800      |
| 4500  | 6            | 6         | 2810           | 5075                                | 5490                             | 160         | 160      | 1900                       | 1710      | 1850            | 1710      |
| 5000  | 6            | 6         | 3060           | 5575                                | 5990                             | 160         | 160      | 1800                       | 1620      | 1590            | 1550      |
| 5500  | 3            | 6         | 3360           | 6075                                | 6490                             | 160         | 160      | 1690                       | 1520      | 1150            | 1130      |
| 6000  | 3            | 6         | 3610           | 6575                                | 6990                             | 160         | 160      | 1520                       | 1400      | 870             | 860       |
| <b>2-Stage Full Free-Lift (FFL) Mast</b>    |              |           |                |                                     |                                  |             |          |                            |           |                 |           |
| 3000  | 6            | 12        | 2010           | 3590                                | 3990                             | 1420        | 1020     | 2000                       | 1800      | 2000            | 1800      |
| <b>3-Stage Full Free-Lift (FFL) Mast</b>    |              |           |                |                                     |                                  |             |          |                            |           |                 |           |
| 4500  | 6            | 6         | 2060           | 5017                                | 5490                             | 1440        | 1070     | 1900                       | 1730      | 1830            | 1730      |
| 4800  | 6            | 6         | 2160           | 5317                                | 5790                             | 1540        | 1170     | 1840                       | 1670      | 1710            | 1660      |
| 5500  | 3            | 6         | 2425           | 6017                                | 6490                             | 1800        | 1430     | 1670                       | 1510      | 1110            | 1110      |
| 6000  | 3            | 6         | 2610           | 6517                                | 6990                             | 1990        | 1620     | 1430                       | 1390      | 850             | 850       |
| 6500  | 3            | 6         | 2825           | 7017                                | 7490                             | 2215        | 1835     | 1170                       | 1170      | 610             | 610       |

| J2.5XTLG MAST DIMENSIONS                    |              |           |                |                                     |                                  |             |          |                            |           |                 |           |
|---|--------------|-----------|----------------|-------------------------------------|----------------------------------|-------------|----------|----------------------------|-----------|-----------------|-----------|
| Maximum Fork Height                         | Mast Tilt    |           | Lowered Height | Overall Extended Height without LBR | Overall Extended Height with LBR | Free Lift   |          | J2.5XTLG without sideshift |           |                 |           |
|   | Forward Tilt | Back Tilt |                |                                     |                                  | Without LBR | With LBR | Solid Tyres                |           | Pneumatic Tyres |           |
|   |              |           |                |                                     |                                  |             |          | 500 mm LC                  | 600 mm LC | 500 mm LC       | 600 mm LC |
| (mm)  | (°)          | (°)       | (mm)           | (mm)                                | (mm)                             | (mm)        | (kg)     | (kg)                       | (kg)      | (kg)            |           |
| <b>2-Stage Limited Free-Lift (LFL) Mast</b> |              |           |                |                                     |                                  |             |          |                            |           |                 |           |
| 3000  | 6            | 12        | 2010           | 3575                                | 3990                             | 160         | 160      | 2500                       | 2300      | 2500            | 2300      |
| 4000  | 6            | 6         | 2560           | 4575                                | 4990                             | 160         | 160      | 2500                       | 2300      | 2500            | 2300      |
| 4500  | 6            | 6         | 2810           | 5075                                | 5490                             | 160         | 160      | 2390                       | 2200      | 2080            | 2010      |
| 5000  | 6            | 6         | 3060           | 5575                                | 5990                             | 160         | 160      | 2270                       | 2090      | 1810            | 1760      |
| 5500  | 3            | 6         | 3360           | 6075                                | 6490                             | 160         | 160      | 1860                       | 1840      | 1350            | 1320      |
| 6000  | 3            | 6         | 3610           | 6575                                | 6990                             | 160         | 160      | 1500                       | 1480      | 1040            | 1030      |
| <b>2-Stage Full Free-Lift (FFL) Mast</b>    |              |           |                |                                     |                                  |             |          |                            |           |                 |           |
| 3000  | 6            | 12        | 2010           | 3590                                | 3990                             | 1420        | 1020     | 2500                       | 2300      | 2500            | 2300      |
| <b>3-Stage Full Free-Lift (FFL) Mast</b>    |              |           |                |                                     |                                  |             |          |                            |           |                 |           |
| 4500  | 6            | 6         | 2060           | 5017                                | 5490                             | 1440        | 1070     | 2340                       | 2120      | 2020            | 1990      |
| 4800  | 6            | 6         | 2160           | 5317                                | 5790                             | 1540        | 1170     | 2270                       | 2060      | 1890            | 1870      |
| 5500  | 3            | 6         | 2425           | 6017                                | 6490                             | 1800        | 1430     | 1710                       | 1710      | 1280            | 1280      |
| 6000  | 3            | 6         | 2610           | 6517                                | 6990                             | 1990        | 1620     | 1410                       | 1410      | 1010            | 1010      |
| 6500  | 3            | 6         | 2825           | 7017                                | 7490                             | 2215        | 1835     | 1120                       | 1150      | 740             | 740       |

| J3.0XTLG MAST DIMENSIONS                    |              |           |                |                                     |                                  |             |          |                            |           |                 |           |
|---|--------------|-----------|----------------|-------------------------------------|----------------------------------|-------------|----------|----------------------------|-----------|-----------------|-----------|
| Maximum Fork Height                         | Mast Tilt    |           | Lowered Height | Overall Extended Height without LBR | Overall Extended Height with LBR | Free Lift   |          | J3.0XTLG without sideshift |           |                 |           |
|   | Forward Tilt | Back Tilt |                |                                     |                                  | Without LBR | With LBR | Solid Tyres                |           | Pneumatic Tyres |           |
|   |              |           |                |                                     |                                  |             |          | 500 mm LC                  | 600 mm LC | 500 mm LC       | 600 mm LC |
| (mm)  | (°)          | (°)       | (mm)           | (mm)                                | (mm)                             | (mm)        | (kg)     | (kg)                       | (kg)      | (kg)            |           |
| <b>2-Stage Limited Free-Lift (LFL) Mast</b> |              |           |                |                                     |                                  |             |          |                            |           |                 |           |
| 3000  | 6            | 12        | 2010           | 3575                                | 3990                             | 160         | 160      | 3000                       | 2910      | 3000            | 2910      |
| 4000  | 6            | 6         | 2560           | 4575                                | 4990                             | 160         | 160      | 3000                       | 2850      | 3000            | 2780      |
| 4500  | 6            | 6         | 2810           | 5075                                | 5490                             | 160         | 160      | 2860                       | 2660      | 2750            | 2580      |
| 5000  | 6            | 6         | 3060           | 5575                                | 5990                             | 160         | 160      | 2760                       | 2570      | 2420            | 2350      |
| 5500  | 3            | 6         | 3360           | 6075                                | 6490                             | 160         | 160      | 2340                       | 2290      | 1920            | 1870      |
| 6000  | 3            | 6         | 3610           | 6575                                | 6990                             | 160         | 160      | 1800                       | 1760      | 1380            | 1360      |
| <b>2-Stage Full Free-Lift (FFL) Mast</b>    |              |           |                |                                     |                                  |             |          |                            |           |                 |           |
| 3000  | 6            | 12        | 2010           | 3590                                | 3990                             | 1420        | 1020     | 3000                       | 2900      | 3000            | 2900      |
| <b>3-Stage Full Free-Lift (FFL) Mast</b>    |              |           |                |                                     |                                  |             |          |                            |           |                 |           |
| 4500  | 6            | 6         | 2060           | 5017                                | 5490                             | 1440        | 1070     | 2790                       | 2540      | 2680            | 2540      |
| 4800  | 6            | 6         | 2160           | 5317                                | 5790                             | 1540        | 1170     | 2720                       | 2470      | 2610            | 2470      |
| 5500  | 3            | 6         | 2425           | 6017                                | 6490                             | 1800        | 1430     | 2190                       | 2190      | 1860            | 1860      |
| 6000  | 3            | 6         | 2610           | 6517                                | 6990                             | 1990        | 1620     | 1630                       | 1630      | 1280            | 1280      |
| 6500  | 3            | 6         | 2825           | 7017                                | 7490                             | 2215        | 1835     | 1220                       | 1220      | 820             | 820       |

| J3.5XTLG MAST DIMENSIONS                    |              |           |                |                                     |                                  |             |          |                            |           |                 |           |
|---|--------------|-----------|----------------|-------------------------------------|----------------------------------|-------------|----------|----------------------------|-----------|-----------------|-----------|
| Maximum Fork Height                         | Mast Tilt    |           | Lowered Height | Overall Extended Height without LBR | Overall Extended Height with LBR | Free Lift   |          | J3.5XTLG without sideshift |           |                 |           |
|   | Forward Tilt | Back Tilt |                |                                     |                                  | Without LBR | With LBR | Solid Tyres                |           | Pneumatic Tyres |           |
|   |              |           |                |                                     |                                  |             |          | 500 mm LC                  | 600 mm LC | 500 mm LC       | 600 mm LC |
| (mm)  | (°)          | (°)       | (mm)           | (mm)                                | (mm)                             | (mm)        | (kg)     | (kg)                       | (kg)      | (kg)            |           |
| <b>2-Stage Limited Free-Lift (LFL) Mast</b> |              |           |                |                                     |                                  |             |          |                            |           |                 |           |
| 3000  | 6            | 12        | 2010           | 3575                                | 3990                             | 160         | 160      | 3500                       | 3450      | 3500            | 3450      |
| 4000  | 6            | 6         | 2560           | 4575                                | 4990                             | 160         | 160      | 3500                       | 3320      | 3310            | 3080      |
| 4500  | 6            | 6         | 2810           | 5075                                | 5490                             | 160         | 160      | 3380                       | 3210      | 2960            | 2780      |
| 5000  | 6            | 6         | 3060           | 5575                                | 5990                             | 160         | 160      | 2980                       | 2810      | 2470            | 2320      |
| 5500  | 3            | 6         | 3360           | 6075                                | 6490                             | 160         | 160      | 2430                       | 2290      | 1950            | 1840      |
| 6000  | 3            | 6         | 3610           | 6575                                | 6990                             | 160         | 160      | 1980                       | 1870      | 1520            | 1440      |
| <b>2-Stage Full Free-Lift (FFL) Mast</b>    |              |           |                |                                     |                                  |             |          |                            |           |                 |           |
| 3000  | 6            | 12        | 2010           | 3590                                | 3990                             | 1420        | 1020     | 3500                       | 3440      | 3500            | 3440      |
| <b>3-Stage Full Free-Lift (FFL) Mast</b>    |              |           |                |                                     |                                  |             |          |                            |           |                 |           |
| 4500  | 6            | 6         | 2060           | 5017                                | 5490                             | 1440        | 1070     | 3270                       | 2970      | 2870            | 2810      |
| 4800  | 6            | 6         | 2160           | 5317                                | 5790                             | 1540        | 1170     | 3090                       | 2900      | 2630            | 2590      |
| 5500  | 3            | 6         | 2425           | 6017                                | 6490                             | 1800        | 1430     | 2350                       | 2310      | 1920            | 1880      |
| 6000  | 3            | 6         | 2610           | 6517                                | 6990                             | 1990        | 1620     | 1880                       | 1860      | 1450            | 1430      |
| 6500  | 3            | 6         | 2825           | 7017                                | 7490                             | 2215        | 1835     | 1410                       | 1400      | 920             | 920       |

Note: For integral sideshift deduct 50kg from stated capacity, all ratings with 1070 mm forks, dual tyre capacities available upon request

# HYSTER<sup>®</sup> DEALERS



Contact your nearest  
Hyster<sup>®</sup> Dealership by  
visiting [www.hyster.com](http://www.hyster.com)



## HYSTER PACIFIC

1/23 Rowood Road, Prospect NSW 2148  
Tel: +61 (2) 9795 3800 Fax: +61 (2) 9792 8484

## HYSTER ASIA

2 Venture Drive, #23-28 Vision Exchange, Singapore 608526  
Tel: +65 6863 3387 Fax: +65 6863 3349

[www.hyster.com](http://www.hyster.com)



HysterAsiaPacific



HysterAsiaPacific



Hyster Asia-Pacific