

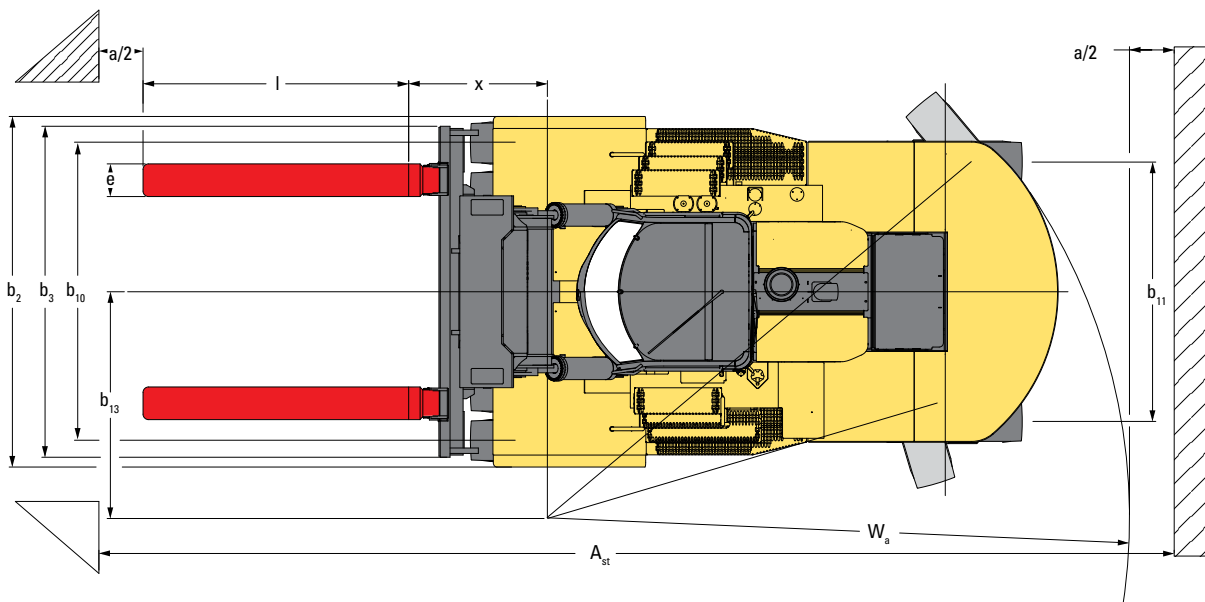
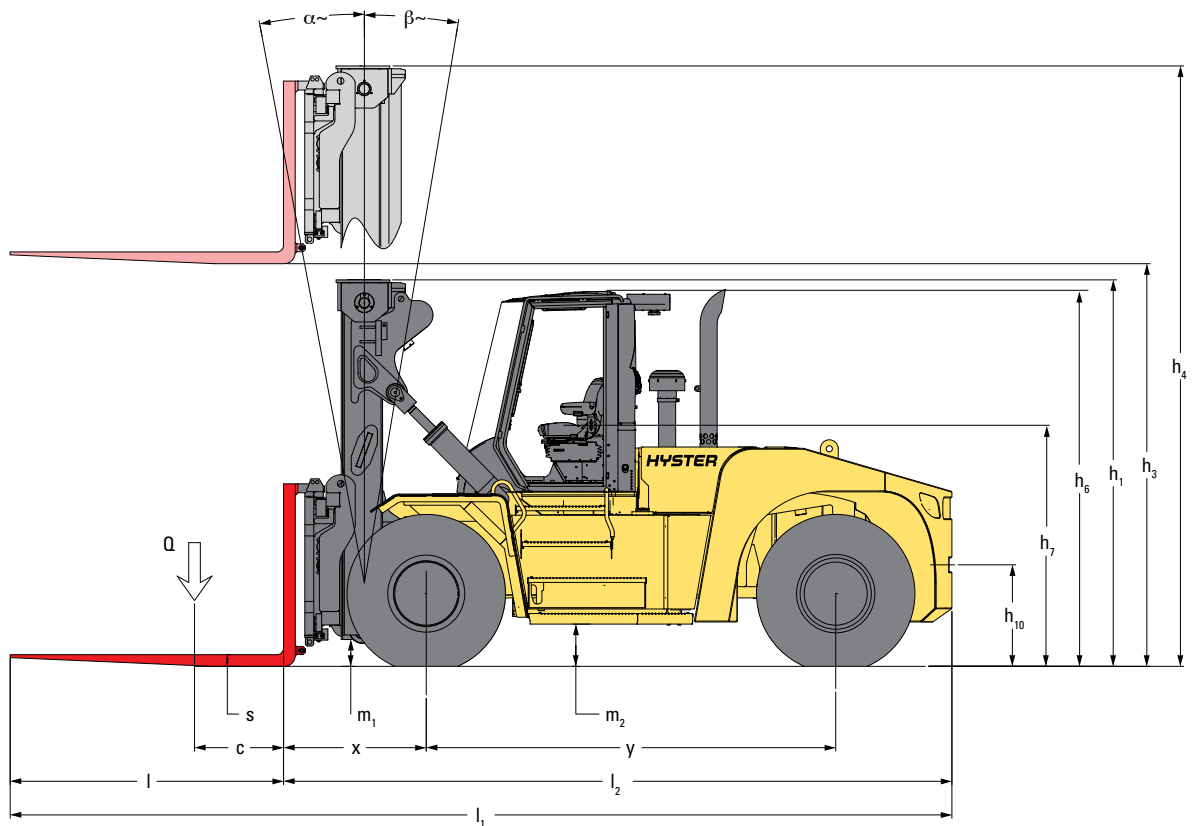
H25-32XD SERIES



HEAVY DUTY FORKLIFT PRODUCT TECHNICAL GUIDE



TRUCK DIMENSIONS



● = Centre of gravity of unladen truck

$$A_{ST} = W_a + x + l_6 + a \text{ (if } b_{12}/2 < b_{13}\text{)}$$

$$A_{ST} = W_a + ((l_6+x)^2 + (b_{12}/2-b_{13})^{2.0})^{0.5} + a \text{ (if } b_{12}/2 > b_{13} \text{ and } W_a > b_{13} \cdot b_{12}/2\text{)}$$

$$A_{ST} = b_{13} + b_{12}/2 ((l_6+x)^2 + (b_{12}/2-b_{13})^{2.0})^{0.5} + a \text{ (if } b_{12}/2 > b_{13} \text{ and } W_a < b_{13} \cdot b_{12}/2\text{)}$$

a = Minimum operating clearance = 10% of A_{ST}
(VDI standard = 200 mm BITA recommendation = 300 mm)

l_6 = load lengths

b_{12} = load width

GENERAL	1-1	Manufacturer			HYSTER	
	1-2	Model designation			H25XD9 / H32XD12	
	1-3	Powertrain / drivetrain			Diesel	
ENGINE	7-1	Engine manufacturer / model			Cummins / QSB 6.7	Mercedes-Benz OM936 / 7.7
	7-1a	Emission legislation			Stage IIIA	Stage V
	7-2	Engine power output according to ISO 1585		kW @ rpm	194@2200	180@1800
	7-2-1	Engine power output - Peak		kW @ rpm	201@2000	180@1800
	7-3	Rated speed		rpm	2,200	
	7-3-1	Engine torque at 1/min		Nm @ rpm	990@1,500	1,000@1200-1600
	7-4	Number of cylinders / displacement		# / cm ³	6 / 6,690	6 / 7,698
	7-5	Fuel consumption according to VDI cycle		l/h	On request	
	7-8	Alternator output		Amps	120	150
	7-9	Electrical system voltage		V	24	
	7-10	Battery voltage, rated capacity		V / Ah	24 / 102	
MISC	10-1	Operating pressure for attachments		MPa	22.5	
	10-2	Oil volume for attachments		l/m	100	
	10-3	Hydraulic tank capacity (1)		l	237 / 274	
	10-4	Fuel tank capacity (2)		l	304 / 364	
	10-4-1	DEF/AdBlue Tank capacity		l	N/A	38
	10-5	Steering design		Type	Hydraulic power steering	
10-6	Number of steering rotations		#	6		

GENERAL	1-1	Manufacturer			HYSTER	
	1-2	Model designation			H25XD9-12	H28XD12 / H32XD9-12
DRIVETRAIN	8-1	Type of drive unit		Type	Torque Converter	
	8-2	Transmission manufacturer / type		Type	ZF 5WG211	
	8-3	Transmission speed forward / backward		#	5 / 3	
	8-5	Wheel drive / drive axle manufacturer / type		Type	AxleTech / PRC 1794W4H	AxleTech / PRC 3806W4H
	8-11	Service brake		Type	Oil immersed (wet) disc	
	8-12	Parking brake		Type	Spring applied, dry disc on drive axle	

(1) H25XD9 (237L) All other models 274L.

(2) H25XD9 (304L) All other models 364L.

NOTES:

Specifications are affected by the condition of the vehicle and how it is equipped, as well as the nature and condition of the operating area. Inform your dealer of the nature and condition of the intended operating area when purchasing your Hyster® truck.


NOTICE:

Care must be exercised when handling elevated loads. Operators must be trained and must read, understand and follow the instructions contained in the Operating Manual.

All values are nominal values and they are subject to tolerances. For further information, please contact the manufacturer.

Hyster products are subject to change without notice.

Lift trucks illustrated may feature optional equipment. Values may vary with alternative configurations.

 **Safety:** This truck conforms to the current EU and ANSI requirements.

CERTIFICATION: Hyster lift trucks meet the design and construction requirements of B56.1-1969, per OSHA Section 1910.178(a)(2), and also comply with the B56.1 revision in effect at time of manufacture. Certification of compliance with the applicable ANSI standards appears on the lift truck. Performance specifications are for a truck equipped as described under Standard Equipment on this Technical Guide. Performance specifications are affected by the condition of the vehicle and how it is equipped, as well as by the nature, condition of the operating area, proper service and maintenance of the vehicle. If these specifications are critical, the proposed application should be discussed with your dealer.

NOTE: Specifications, unless otherwise listed, are for a standard truck without optional equipment.

Specification data is based on VDI 2198.

H25XD9 / H25XD12 / H28XD12 SPECIFICATIONS

			HYSTER								
			H25XD9		H25XD12		H28XD12				
GENERAL	1-1	Manufacturer	HYSTER								
	1-2	Model designation	H25XD9		H25XD12		H28XD12				
	1-3	Powertrain / drivetrain	Diesel								
	1-4	Operator type	Seated								
	1-5	Load capacity at load centre, nominal	Q	kg	25,000			28,000			
	1-6	Load centre	C ₁	mm	900		1,200				
	1-8	Load distance (1)	x	mm	1,189			1,274			
	1-9	Wheelbase	y	mm	3,655		4,315		4,315		
	WEIGHT	2-1	Service weight		kg	37,985		38,456		45,616	
2-2		Axle loading with load, front / rear		kg	58,534	4,451	58,205	5,250	67,530	6,086	
2-3		Axle loading without load, front / rear		kg	19,245	18,739	19,364	19,091	23,476	22,139	
WHEELS	3-1	Tyre type		Type	Pneumatic						
	3-2	Tyre size, front		0	14.00 - 24 28PR			16.00 - 25 32PR			
	3-3	Tyre size, rear		0	14.00 - 24 28PR			16.00 - 25 32PR			
	3-5	Wheels, number front / rear (x = driven wheels)		#	x4 / 2						
	3-6	Tread, front	b ₁₀	mm	2,279			2,424			
	3-7	Tread, rear	b ₁₁	mm	2,381			2,338			
	4-1	Mast tilt, forward / backward	α/β	deg	6° / 10°						
DIMENSIONS	4-2	Height, mast lowered (2)		h ₁	mm	4,099			4,224		
	4-3	Free lift		h ₂	mm	0					
	4-4	Lift (3)		h ₃	mm	4,265					
	4-5	Height, mast extended		h ₄	mm	6,231			6,356		
	4-7	Height of overhead guard (open cab)		h ₆	mm	3,399			3,495		
	4-7-1	Height of overhead guard (closed cab)		h ₆	mm	3,426			3,522		
	4-7-2	Height of overhead guard (closed cab w/ airco)		h ₆	mm	3,426			3,522		
	4-7-3	Height of overhead guard (closed cab w/ strobe light)		h ₆	mm	3,523			3,619		
	4-7-4	Height of overhead guard (closed cab w/ work lights)		h ₆	mm	3,575			3,671		
	4-7-5	Height of overhead guard (closed cab w/ airco & strobe light)		h ₆	mm	3,553			3,649		
	4-8	Seat Height to SIP (4)		h ₇	mm	2,193			2,292		
	4-9	Coupling height		h ₁₀	mm	935			1,031		
	4-19	Overall length		l ₁	mm	8,321		8,981		9,066	
	4-20	Length to face of forks		l ₂	mm	5,881		6,541		6,626	
	4-21	Overall width across drive tyres		b ₂	mm	3,220			3,430		
	4-22	Fork dimensions ISO 2331		s/e/l	mm	105 / 280	2,440	105 / 280	2,440	105 / 300	2,440
	4-23	Carriage type				Dual Function					
	4-24	Carriage width		b ₃	mm	3,040			3,200		
	4-25	Width over forks (min / max)		b ₅	mm	1,430 / 2,970			1,480 / 3,140		
	4-25a	Width over forks alternate position (min/max)		b ₅	mm	880 / 2,420			930 / 2,590		
	4-30	Sideshift @ width over forks		b ₈ b ₅	mm	+/-385 / 2,200			+/-415 / 2,310		
	4-31	Ground clearance, lowest point		m ₁	mm	219			227		
	4-32	Ground clearance, centre of wheelbase		m ₂	mm	406			502		
	4-33-1	Load size		b x l	mm	2400		2400		2400	
	4-34-1-1	Aisle width (a=10%)		Ast	mm	8,915		9,774		9,859	
	4-34-1-2	Aisle width (a=0)		Ast	mm	9,115		9,974		10,059	
	4-34-1-3	Aisle width (a=200 mm)		Ast	mm	9,807		10,751		10,845	
	4-33-2	Load size		b x l	mm	1800		1800		1800	
	4-34-2-1	Aisle width (a=10%)		Ast	mm	9,147		10,091		10,185	
	4-34-2-2	Aisle width (a=0)		Ast	mm	8,315		9,174		9,259	
	4-34-2-3	Aisle width (a=200 mm)		Ast	mm	8,515		9,374		9,459	
	4-35	Outside turning radius		W _a	mm	8,326		6,185		6,185	
4-36	Internal turning radius (6)		b ₁₃	mm	2,040		2,589		2,589		
PERFORMANCE	5-1	Travel speed, with / without load		km/h	25		25		25		
	5-2	Lifting speed, with / without load		m/s	0.33	0.35	0.33	0.35	0.27	0.29	
	5-2-1	Lifting speed, with 70% load		m/s	0.34			0.28			
	5-3	Lowering speed with / without load		m/s	0.50	0.50	0.50	0.50	0.50	0.50	
	5-5	Drawbar pull - 1.6 km/h (1 mph), with / without load		kN	196	200	196	200	197	200	
	5-6	Drawbar pull - max, with / without load		kN	238	242	238	242	240	245	
	5-7	Gradeability - 1.6 km/h 1 mph, with / without load (5)		%	33 / 34		33 / 35		28 / 35		
	5-8	Gradeability - max, with / without load (5)		%	42 / 34		41 / 35		35 / 35		

(1) Centre of drive axle to front face of forks

(2) Unladen with new tyres

(3) Bottom of Forks

(4) SIP to drive axle plus radius of tyres to ground using standard tyres

(5) Gradeability figures are provided for comparison of tractive performance, but are not intended to endorse the operation of vehicle on the stated inclines.

(6) Distance centre truck to centre of internal turning radius.

H30XD9 / H30XD12 / H32XD9 / H32XD12 SPECIFICATIONS

GENERAL	1-1	Manufacturer		HYSTER				
	1-2	Model designation		H30XD9	H30XD12	H32XD9	H32XD12	
	1-3	Powertrain / drivetrain		Diesel				
	1-4	Operator type		Seated				
WEIGHT	1-5	Load capacity at load centre, nominal	Q	kg	29,700	30,000	31,950	32,000
	1-6	Load centre	C ₁	mm	900	1,200	900	1,200
	1-8	Load distance ⁽¹⁾	x	mm	1,274			
	1-9	Wheelbase	y	mm	3,935	4,315	3,935	4,825
WEIGHT	2-1	Service weight		kg	45,325	46,262	45,935	45,868
	2-2	Axle loading with load, front / rear		kg	69,549 / 5,477	70,740 / 5,522	73,096 / 4,789	71,898 / 5,970
	2-3	Axle loading without load, front / rear		kg	23,440 / 21,885	23,540 / 22,723	23,495 / 22,441	23,490 / 22,378
WHEELS	3-1	Tyre type		Pneumatic				
	3-2	Tyre size, front		16.00 - 25 32PR				
	3-3	Tyre size, rear		16.00 - 25 32PR				
	3-5	Number of tyres, front / rear (x = driven wheels)		x4 / 2				
	3-6	Tread, front	b ₁₀	mm	2,424			
	3-7	Tread, rear	b ₁₁	mm	2,338			
	DIMENSIONS	4-1	Mast tilt, forward / backward	α/β	deg	6° / 10°		
4-2		Height, mast lowered ⁽²⁾	h ₁	mm	4,224			
4-3		Free lift	h ₂	mm	0			
4-4		Lift ⁽³⁾	h ₃	mm	4,265			
4-5		Height, mast extended	h ₄	mm	6,356			
4-7		Height of overhead guard (open cab)	h ₆	mm	3,495			
4-7-1		Height of overhead guard (closed cab)	h ₆	mm	3,522			
4-7-2		Height of overhead guard (closed cab w/ airco)	h ₆	mm	3,522			
4-7-3		Height of overhead guard (closed cab w/ strobe lights)	h ₆	mm	3,619			
4-7-4		Height of overhead guard (closed cab w/ work lights)	h ₆	mm	3,671			
4-7-5		Height of overhead guard (closed cab w/ airco & strobe lights)	h ₆	mm	3,649			
4-8		Seat Height to SIP ⁽⁴⁾	h ₇	mm	2,292			
4-12		Coupling height	h ₁₀	mm	1,031			
4-19		Overall length	l ₁	mm	8,686	9,066	8,686	9,576
4-20		Length to face of forks	l ₂	mm	6,246	6,626	6,246	7,136
4-21		Overall width across tyres	b ₂	mm	3,430			
4-22		Fork dimensions ISO 2331	s/e/l	mm	105 / 300 / 2,440			
4-23		Carriage type			Dual Function			
4-24		Carriage width	b ₃	mm	3,200			
4-25		Width over forks (min / max)	b ₅	mm	1,480 / 3,140			
4-25a		Width over forks alternate (min / max)	b ₅	mm	930 / 2,590			
4-30		Sideshift @ width over forks	b ₈	mm	+/-415 / 2,310			
4-31		Ground clearance, laden, below mast	m ₁	mm	227			
4-32		Ground clearance, centre of wheelbase	m ₂	mm	502			
4-33-1		Load size	b x l	mm	2,400 x 2,400			
4-34-1-1		Aisle width (a=10%)	Ast	mm	10,302	10,845	10,302	11,574
4-34-1-2		Aisle width (a=0)	Ast	mm	9,365	9,859	9,365	10,522
4-34-1-3		Aisle width (a=200mm)	Ast	mm	9,565	10,059	9,565	10,722
4-33-2		Load size	b x l	mm	1,800 x 1,800			
4-34-2-1		Aisle width (a=10%)	Ast	mm	9,642	10,185	9,642	10,914
4-34-2-2		Aisle width (a=0)	Ast	mm	8,765	9,259	8,765	9,992
4-34-2-3		Aisle width (a=200mm)	Ast	mm	8,965	9,459	8,965	10,122
4-35		Outside turning radius	W _a	mm	5,691	6,185	5,691	6,848
4-36	Internal turning radius ⁽⁶⁾	b ₁₃	mm	2,273	2,589	2,273	3,013	
PERFORMANCE	5	Travel speed, with / without load		km/h	25 / 25			
	5-2-1	Lifting speed, with 70% load		m/s	0.28			
	5-3	Lowering speed with / without load		m/s	0.50 / 0.50			
	5-5	Drawbar pull - 1.6 km/h 1 mph, with / without load		kN	197 / 202		196 / 202	
	5-6	Drawbar pull - max, with / without load		kN	239 / 245	239 / 244	239 / 244	239 / 244
	5-7	Gradeability - 1.6 km/h 1 mph, with / without load ⁽⁵⁾		%	28 / 35	27 / 35	27 / 34	27 / 36
	5-8	Gradeability - max, with / without load ⁽⁵⁾		%	34 / 35	34 / 35	33 / 34	33 / 36

(1) Centre of drive axle to front face of forks

(2) Unladen with new tyres

(3) Bottom of Forks

(4) SIP to drive axle plus radius of tyres to ground using standard tyres

(5) Gradeability figures are provided for comparison of tractive performance, but are not intended to endorse the operation of vehicle on the stated inclines.

(6) Distance centre truck to centre of internal turning radius.

MAST AND CAPACITY INFORMATION

H25XD9 RATED CAPACITY KG @ 900 MM AND @1200 LOAD CENTRE

	Lift height h ₃ (mm)	Lowered height h ₁ (mm)	Free lift height h ₂ (m)	Extended height h ₄ (mm)	Dual Function Side Shift & Fork Positioning carriage without ZERO IN-TO-IN fork positioning			Dual Function Side Shift & Fork Positioning carriage with ZERO IN-TO-IN fork positioning		
					Capacity @ 900 mm load centre (kg)	Mast tilt (forward/ backward) (°)	Capacity @ 1,200 mm load centre (kg)	Capacity @ 900 mm load centre (kg)	Mast tilt (forward/ backward) (°)	Capacity @ 1,200 mm load centre (kg)
2 STAGE NFL	3,155	3,491	0	5,016	25,000	6 / 10	22,700	25,000	6 / 10	22,700
	3,760	3,794	0	5,621	25,000	6 / 10	22,640	25,000	6 / 10	22,640
	4,370	4,099	0	6,231	25,000	6 / 10	22,600	25,000	6 / 10	22,600
	4,980	4,404	0	6,841	25,000	6 / 10	22,540	25,000	6 / 10	22,540
	6,200	5,014	0	8,061	25,000	6 / 10	22,400	25,000	6 / 10	22,400
	9,250	6,539	0	11,111	23,720	6 / 6	21,000	20,520	6 / 6	21,000 (1)

H25XD12 RATED CAPACITY KG @1200 LOAD CENTRE

	Lift height h ₃ (mm)	Lowered height h ₁ (mm)	Free lift height h ₂ (m)	Extended height h ₄ (mm)	Dual Function Side Shift & Fork Positioning carriage without ZERO IN-TO-IN fork positioning		Dual Function Side Shift & Fork Positioning carriage with ZERO IN-TO-IN fork positioning	
					Capacity @ 1,200 mm load centre (kg)	Mast tilt (forward/ backward) (°)	Capacity @ 1,200 mm load centre (kg)	Mast tilt (forward/ backward) (°)
2 STAGE NFL	3,155	3,491	0	5,016	25,000	6 / 10	25,000	6 / 10
	3,760	3,794	0	5,621	25,000	6 / 10	25,000	6 / 10
	4,370	4,099	0	6,231	25,000	6 / 10	25,000	6 / 10
	4,980	4,404	0	6,841	25,000	6 / 10	25,000	6 / 10
	6,200	5,014	0	8,061	25,000	6 / 10	25,000	6 / 10
	9,250	6,539	0	11,111	22,300	6 / 6	20,300 (1)	6 / 6

H28XD12 RATED CAPACITY KG @ 900 MM AND @1200 LOAD CENTRE

	Lift height h ₃ (mm)	Lowered height h ₁ (mm)	Free lift height h ₂ (m)	Extended height h ₄ (mm)	Dual Function Side Shift & Fork Positioning carriage without ZERO IN-TO-IN fork positioning			Dual Function Side Shift & Fork Positioning carriage with ZERO IN-TO-IN fork positioning		
					Capacity @ 900 mm load centre (kg)	Mast tilt (forward/ backward) (°)	Capacity @ 1,200 mm load centre (kg)	Capacity @ 900 mm load centre (kg)	Mast tilt (forward/ backward) (°)	Capacity @ 1,200 mm load centre (kg)
2 STAGE NFL	2,850	3,464	0	4,836	31,860	6 / 10	28,000	31,860	6 / 10	28,000
	3,155	3,616	0	5,141	31,860	6 / 10	28,000	31,860	6 / 10	28,000
	3,760	3,919	0	5,746	31,860	6 / 10	28,000	31,860	6 / 10	28,000
	4,370	4,224	0	6,356	31,860	6 / 10	28,000	31,860	6 / 10	28,000
	6,200	5,139	0	8,186	31,860	6 / 10	28,000	31,860	6 / 10	28,000
	6,810	5,444	0	8,716	31,700	6 / 10	27,860	31,700	6 / 10	27,860
	9,250	7,174	0	11,746	30,920	6 / 6	27,180	30,920 (1)	6 / 6	27,180 (1)
	9,860	7,479	0	12,356	30,600	6 / 6	26,900	29,660 (1)	6 / 6	26,900 (1)

H30XD9 RATED CAPACITY KG @ 900 MM AND @1200 LOAD CENTRE

	Lift height h ₃ (mm)	Lowered height h ₁ (mm)	Free lift height h ₂ (m)	Extended height h ₄ (mm)	Dual Function Side Shift & Fork Positioning carriage without ZERO IN-TO-IN fork positioning			Dual Function Side Shift & Fork Positioning carriage with ZERO IN-TO-IN fork positioning		
					Capacity @ 900 mm load centre (kg)	Mast tilt (forward/ backward) (°)	Capacity @ 1,200 mm load centre (kg)	Capacity @ 900 mm load centre (kg)	Mast tilt (forward/ backward) (°)	Capacity @ 1,200 mm load centre (kg)
2 STAGE NFL	2,850	3,464	0	4,836	30,000	6 / 10	27,000	30,000	6 / 10	27,000
	3,155	3,616	0	5,141	30,000	6 / 10	27,000	30,000	6 / 10	27,000
	3,760	3,919	0	5,746	30,000	6 / 10	26,940	30,000	6 / 10	26,940
	4,370	4,224	0	6,356	30,000	6 / 10	26,880	30,000	6 / 10	26,880
	6,200	5,139	0	8,186	30,000	6 / 10	26,620	30,000	6 / 10	26,620
	6,810	5,444	0	8,716	29,840	6 / 10	26,420	29,840 (1)	6 / 10	26,420 (1)
	9,250	7,174	0	11,746	28,880	6 / 6	25,360	28,880 (1)	6 / 6	25,360 (1)
	9,860	7,479	0	12,356	28,580	6 / 6	25,120	28,580 (1)	6 / 6	25,120 (1)

(1) Note: Carriage with ZERO IN-TO-IN fork positioning not recommended in combination with lift heights above 6200 mm

MAST AND CAPACITY INFORMATION

H30XD12 RATED CAPACITY KG @ 900 MM AND @1200 LOAD CENTRE

	Lift height h ₃ (mm)	Lowered height h ₁ (mm)	Free lift height h ₂ (m)	Extended height h ₄ (mm)	Dual Function Side Shift & Fork Positioning carriage without ZERO IN-TO-IN fork positioning			Dual Function Side Shift & Fork Positioning carriage with ZERO IN-TO-IN fork positioning		
					Capacity @ 900 mm load centre (kg)	Mast tilt (forward/ backward) (°)	Capacity @ 1,200 mm load centre (kg)	Capacity @ 900 mm load centre (kg)	Mast tilt (forward/ backward) (°)	Capacity @ 1,200 mm load centre (kg)
2 STAGE NFL	2,850	3,464	0	4,836	32,000	6 / 10	30,000	32,000	6 / 10	30,000
	3,155	3,616	0	5,141	32,000	6 / 10	30,000	32,000	6 / 10	30,000
	3,760	3,919	0	5,746	32,000	6 / 10	30,000	32,000	6 / 10	30,000
	4,370	4,224	0	6,356	32,000	6 / 10	30,000	32,000	6 / 10	30,000
	6,200	5,139	0	8,186	32,000	6 / 10	30,000	32,000	6 / 10	30,000
	6,810	5,444	0	8,716	31,840	6 / 10	29,840	31,840	6 / 10	29,840
	9,250	7,174	0	11,746	31,100	6 / 6	29,000	31,100 ⁽¹⁾	6 / 6	29,000 ⁽¹⁾
	9,860	7,479	0	12,356	30,880	6 / 6	29,680	29,840 ⁽¹⁾	6 / 6	28,720 ⁽¹⁾

H32XD9 RATED CAPACITY KG @ 900 MM AND @1200 LOAD CENTRE

	Lift height h ₃ (mm)	Lowered height h ₁ (mm)	Free lift height h ₂ (m)	Extended height h ₄ (mm)	Dual Function Side Shift & Fork Positioning carriage without ZERO IN-TO-IN fork positioning			Dual Function Side Shift & Fork Positioning carriage with ZERO IN-TO-IN fork positioning		
					Capacity @ 900 mm load centre (kg)	Mast tilt (forward/ backward) (°)	Capacity @ 1,200 mm load centre (kg)	Capacity @ 900 mm load centre (kg)	Mast tilt (forward/ backward) (°)	Capacity @ 1,200 mm load centre (kg)
2 STAGE NFL	2,850	3,464	0	4,836	32,000	6 / 10	28,680	32,000	6 / 10	28,680
	3,155	3,616	0	5,141	32,000	6 / 10	28,640	32,000	6 / 10	28,640
	3,760	3,919	0	5,746	32,000	6 / 10	28,560	32,000	6 / 10	28,560
	4,370	4,224	0	6,356	32,000	6 / 10	28,500	32,000	6 / 10	28,500
	6,200	5,139	0	8,186	32,000	6 / 10	28,240	32,000	6 / 10	28,240
	6,810	5,444	0	8,716	31,840	6 / 10	28,040	31,840	6 / 10	28,040
	9,250	7,174	0	11,746	30,020	6 / 6	26,360	30,020 ⁽¹⁾	6 / 6	26,360 ⁽¹⁾
	9,860	7,479	0	12,356	29,420	6 / 6	26,160	29,420 ⁽¹⁾	6 / 6	26,120 ⁽¹⁾

H32XD12 RATED CAPACITY KG @1200 LOAD CENTRE

	Lift height h ₃ (mm)	Lowered height h ₁ (mm)	Free lift height h ₂ (m)	Extended height h ₄ (mm)	Dual Function Side Shift & Fork Positioning carriage without ZERO IN-TO-IN fork positioning		Dual Function Side Shift & Fork Positioning carriage with ZERO IN-TO-IN fork positioning	
					Capacity @ 1,200 mm load centre (kg)	Mast tilt (forward/ backward) (°)	Capacity @ 1,200 mm load centre (kg)	Mast tilt (forward/ backward) (°)
2 STAGE NFL	2,850	3,464	0	4,836	32,000	6 / 10	32,000	6 / 10
	3,155	3,616	0	5,141	32,000	6 / 10	32,000	6 / 10
	3,760	3,919	0	5,746	32,000	6 / 10	32,000	6 / 10
	4,370	4,224	0	6,356	32,000	6 / 10	32,000	6 / 10
	6,200	5,139	0	8,186	32,000	6 / 10	32,000	6 / 10
	6,810	5,444	0	8,716	32,000	6 / 10	32,000	6 / 10
	9,250	7,174	0	11,746	31,020	6 / 6	31,020	6 / 6
	9,860	7,479	0	12,356	30,720	6 / 6	29,820	6 / 6

(1) Note: Carriage with ZERO IN-TO-IN fork positioning not recommended in combination with lift heights above 6200 mm

STANDARD AND OPTIONAL EQUIPMENT

PERFORMANCE	STD	OPT			
Mercedes OM936 7.7L Stage V Diesel Engine 180 kW @ 2200 rpm	Stage V		3280mm Pin Type Carriage with Individual Fork Positioner (H28XD-32XD9/12)		X
Cummins QSB 6.7L Stage IIIA diesel engine	Stage IIIA		3100mm Pin Type Apron-Style Sideshift Carriage (H25XD9/12)		X
Heavy duty air intake	X		3280mm Pin Type Apron-Style Sideshift Carriage (H28XD-32XD9/12)		X
Raised air intake pre-filter		X	3100mm Pin Type Apron-Style Sideshift Carriage with Individual Fork Positioner (H25XD9/12)		X
Hydrodynamic 5-speed ZF WG211 transmission	X		3280mm Pin Type Apron-Style Sideshift Carriage with Individual Fork Positioner (H28XD-32XD9/12)		X
AxleTech Drive Axle PRC1756 W4H with oil-immersed brakes (H25XD9/12)	X		1500mm Pin Type Coil Ram - 356mm Outside Diameter - 600mm Top of Ram to Ground		X
AxleTech Drive Axle PRC3806 W4H with oil-immersed brakes (H28-32XD9/12)	X		1800mm Pin Type Coil Ram - 356mm Outside Diameter - 600mm Top of Ram to Ground		X
DRIVE	STD	OPT			
Travel Speed Limiter - unconditional and customer adjustable - pre-set to 20km/hr	X		1500mm Hook Type Coil Ram - 356mm Outside Diameter - 600mm Top of Ram to Ground		X
14.00 x 24 24PR Pneumatic Steer and Drive	X		1800mm Hook Type Coil Ram - 356mm Outside Diameter - 600mm Top of Ram to Ground		X
14.00 - R24 Michelin XZM radial drive and steer tyres (H25XD9/12)		X	2440mm Long x 105mm Thick x 280mm Wide - Pin Type Forks with Standard Taper (H25XD9/12)		X
14.00 - R24 Trelleborg radial drive and steer tyres (H25XD9/12)		X	2440mm Long x 105mm Thick x 300mm Wide - Pin Type Forks with Standard Taper (H28-32XD9/12)		X
16.00 - 25 32PR Pneumatic bias ply drive and steer tyres (H28-32XD9/12)	X		2440mm Long x 105mm Thick x 280mm Wide - Hook Type Forks with Standard Taper (H25XD9/12)	X	
16.00 - 25 32PR Continental straddlemaster bias ply drive and steer tyres (H28-32XD9/12)		X	2440mm Long x 105mm Thick x 300mm Wide - Hook Type Forks with Standard Taper (H28-32XD9/12)	X	
16.00 - R25 Michelin XZM radial drive and steer tyres (H28-32XD9/12)		X	2440mm Long x 110mm Thick x 300mm Wide - Pin Type Forks with Standard Taper (H28-32XD9/12)		X
Spare wheels and tyres		X	2440mm Long x 110mm Thick x 300mm Wide - Hook Type Forks with Standard Taper (H28-32XD9/12)		X
LIFT	STD	OPT	ERGONOMICS	STD	OPT
Single stage MONO mast		X	Open operator compartment (without doors and screens)	X	
2-stage non-free lift mast	X		Enclosed operator cabin		X
2-stage full free lift mast		X	Powered tilt operator compartment for service		X
Mast tilt - 15° Forward / 10° Back		X	Manual tilt operator compartment for service	X	
Mast tilt - 6° Forward / 10° Back	X		Isolated cabin mounting for low noise and vibration	X	
Mast tilt - 6° Forward / 6° Back		X	Operator presence system	X	
Mast Tilt Indicator - Mechanical		X	Mechanical suspension seat	X	
Hydraulic Accumulator		X	Air suspension seat		X
Pressure compensated lowering	X		Deluxe air suspension seat		X
HANDLING	STD	OPT	Low backrest seat	X	
3000mm Quick Disconnect Hook Type Dual Function Sideshift Carriage with Simultaneous and Individual Fork Positioner - 410 or 0mm in-to-in (H25XD9/12)	X		High backrest seat		X
3000mm Quick Disconnect Hook Type Dual Function Sideshift Carriage with Individual Fork Positioner and 1 Spare Auxiliary Function - 410 or 0mm in-to-in (H25XD9/12)		X	Additional armrest on left side		X
3000mm Quick Disconnect Hook Type Dual Function Sideshift Carriage with Simultaneous and Individual Fork Positioner - 870 or 320mm in-to-in (H25XD9/12)		X	Cloth seat cover		X
3000mm Quick Disconnect Hook Type Dual Function Sideshift Carriage with Individual Fork Positioner and 1 Spare Auxiliary Function - 870 or 320mm in-to-in (H25XD9/12)		X	Vinyl seat cover	X	
3180mm Quick Disconnect Hook Type Dual Function Sideshift Carriage with Simultaneous and Individual Fork Positioner (H28-32XD9/12)	X		Seat heating		X
3180mm Quick Disconnect Hook Type Dual Function Sideshift Carriage with Simultaneous and Individual Fork Positioner - 880 or 330mm in-to-in (H28-32XD9/12)		X	Seat ventilation		X
3180mm Quick Disconnect Hook Type Dual Function Sideshift Carriage with Individual Fork Position and 1 Spare Auxiliary Function - 420 or 0mm in-to-in (H28-32XD9/12)		X	2-point high visibility seatbelt	X	
3180mm Quick Disconnect Hook Type Dual Function Sideshift Carriage with Individual Fork Positioner and 1 Spare Auxiliary Function - 880 or 330mm in-to-in (H28-32XD9/12)		X	Lateral seat sliding mechanism		X
3100mm Pin Type Side Shift frame Carriage (H25XD9/12)		X	Floor mat	X	
3100mm Pin Type Carriage with Mechanical Fork Locks (H25XD9/12)		X	Coat hook	X	
3280mm Pin Type Carriage with Mechanical Fork Locks (H28XD-32XD9/12)		X	Front, top and rear wipers with individual controlled washers		X
3100mm Pin Type Carriage with Individual Fork Positioner (H25XD9/12)		X	"H"-pattern front wiper (Enclosed operator cabin)		X
			"I"-pattern front wiper (Enclosed operator cabin)	X	
			Top window with armoured glass (Enclosed operator cabin)	X	
			Steel bars under armoured glass top window (enclosed operator cabin)		X
			Tinted operator compartment windows (all)		X
			Tinted operator compartment top window		X
			Plexiglass shield in front of front window		X
			Wire mesh installed on top of operator compartment		X
			Operator shield wire mesh		X
			7" Integrated performance display	X	
			Touchpoint™ mini levers hydraulic control integrated in control arm	X	
			Joystick hydraulic control integrated in control arm		X
			Steering wheel with spinner knob	X	

STANDARD AND OPTIONAL EQUIPMENT

Directional control lever		X	Auto greasing system for basic truck and outer mast		X
Hyster Monotrol pedal directional control		X	24 volt electrical system	X	
Directional control on Mini-levers or Joystick	X		Steer wheel lug nut protection		X
Park brake - manual	X		Front mud flaps		X
Park brake - automatic		X	Rear mud flaps		X
Heater with adjustable speed fan (enclosed operator cabin)	X		Lifting eyes - 2 front and 2 rear		X
Diesel fueled cabin heater		X	APPEARANCE	STD	OPT
Telescoping and tilting steering column	X		Hyster yellow paint base truck	X	
USB outlet inside armrest	X		Special paint base truck		X
24-12 DC converter with 2 sockets and 2 USB outlets		X	Operator compartment special paint (outside only)		X
Automatic climate control		X	Wheel Rim Side View Painted Same Colour as Base Truck		X
Reading light		X	Hazard warning striping on counterweight		X
Sun shades on top and rear		X	SUPPLEMENTAL	STD	OPT
Sun visors front window		X	Literature package	X	
Trainer seat		X	Operator's manual	X	
Recirculation fan		X	CE certification*	X	
Accessory mounting bar on cab front right pillar		X	Warranty: 12 Months / 2,000 Hours Parts manufacturer's warranty		X
Document holder on cab front right pillar		X	Warranty: 24 Months / 4,000 Hours Parts manufacturer's warranty	X	
Heated top- and/or rear window		X			
Radio preparation set-up (wiring, two speakers and antenna)		X			
Bluetooth radio with 2 speakers and antenna		X			
VISIBILITY	STD	OPT			
Exterior mirrors mounted to cab		X			
Interior wide angle mirrors	X				
Rear view camera system		X			
Radar object detection system		X			
Halogen work lights	X				
LED work lights		X			
High Performance LED work lights		X			
Two head lights mounted on front fenders		X			
Mast mounted work lights		X			
Four cabin mounted work lights		X			
Two rearward work lights mounted on the cabin	X				
LED stop/tail/brake lights	X				
Turn signals, hazard and marker lights (LED)	X				
OPERATION	STD	OPT			
Air horn 112 dBA		X			
Electric horn 105 dBA	X				
Audible alarm – reverse direction activated 82–102 dB(A), self-adjusting		X			
Audible alarm – reverse direction white noise		X			
Forward / reverse motion alarm		X			
Blue LED spotlight – rear / front and rear		X			
Seatbelt interlock for engine start		X			
Tyre pressure monitoring system		X			
Air-conditioning or automatic climate control off with open door		X			
Automatic truck shutdown with timer		X			
Lockable battery disconnect switch		X			
Battery jump start connector (NATO plug)		X			
Truck Start with key switch and start button	X				
Operator password (display) for truck start		X			
Seatbelt interlock for truck start		X			
Power distribution group with fuses	X				
Fuses partially replaced by electric circuit breakers		X			
Non-lockable fuel cap	X				
Lockable fuel cap		X			
Diesel fuel inlet strainer in filler neck		X			
Hyster Tracker wireless asset management system	X				
Hyster Tracker wireless asset management - Access / Verification		X			
Hyster Tracker wireless asset management - Monitoring		X			

*Standard for Stage V and optional for Stage IIIA
 Other options available through Special Products Engineering Department (SPED).
 Contact Hyster for details.

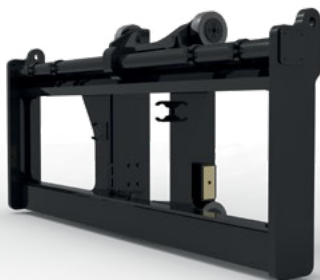
Range of 2 Stage NFL Masts



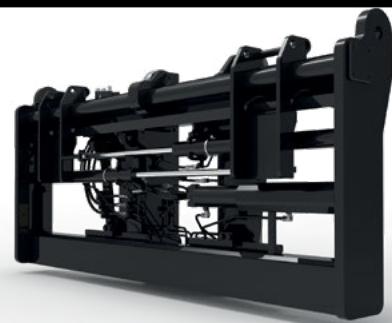
Pin Type and Quick Disconnect Hook Type Forks



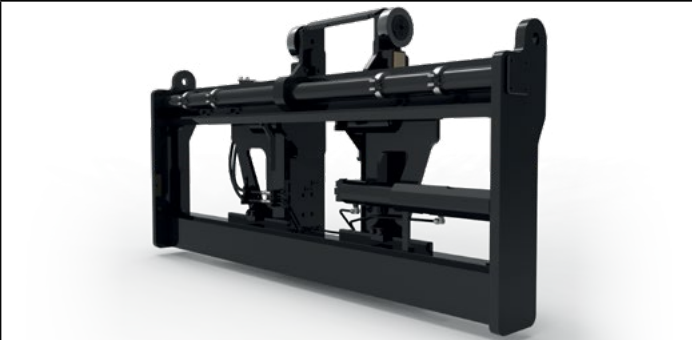
3.100 mm wide Standard Carriage – Pin Type Forks



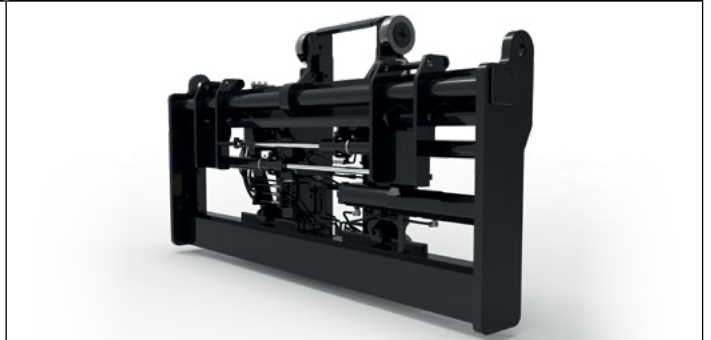
3.100 mm wide Carriage with Fork Positioning – Individual Fork Control – Pin Type Forks



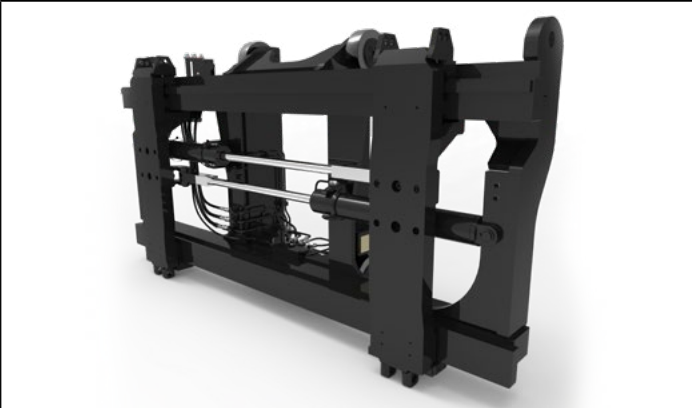
3.100 mm wide Side shift frame Carriage – Pin Type Forks



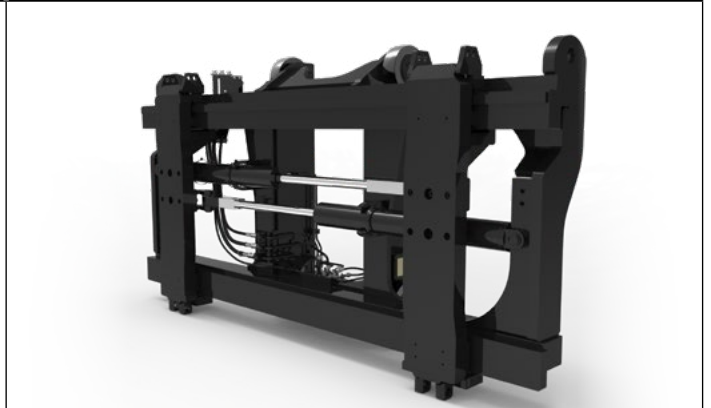
3.100 mm wide Side shift frame carriage with Fork Positioning – Individual Fork Control – Pin Type Forks



3.040 mm wide Hook Type Mount Dual Function Carriage with Side shift and Fork Positioning – Individual Fork Control – Hook Type Forks



3.200 mm wide Multi Purpose Dual Function Carriage with Side shift and Fork Positioning – Individual Fork Control – Hook Type Forks



Mono Mast



Integrated Coil Ram Carriage



Side shift frame Pin Type Mount Integrated Coil Ram Carriage




Coil Ram





HYSTER EUROPE
Centennial House, Building 4.5, Frimley Business Park,
Frimley, Surrey, GU16 7SG, United Kingdom

Visit us online at www.hyster.com or call us at **+44 (0) 1276 538500**.

Hyster-Yale Material Handling, Inc. trading as Hyster Europe.
Registered Address: Centennial House, Building 4.5, Frimley Business Park, Frimley, Surrey GU16 7SG, United Kingdom.
Registered in England and Wales. Company Registration Number: 02636775.
© 2024 Hyster-Yale Materials Handling, Inc., all rights reserved. Hyster and  are trademarks of Hyster-Yale Group, Inc.
Hyster products are subject to change without notice. Trucks may be shown with optional equipment.



Safety: This truck conforms to the current EU requirements