

THE HYSTER® A SERIES DISTINCTLY HYSTER, BUILT FOR YOU



Discover the A Series, built to meet the needs of the application and operator.



➤ DELIVERS WHAT IT PROMISES



Excellent all-round visibility provides overview and safety in heavy depot traffic



Operator comfort and ergonomic workplace for long shifts



Reduced downtime reducing servicing requirements



Economical to run due to highly fuel efficient engine



Extremely reliable due to robust construction



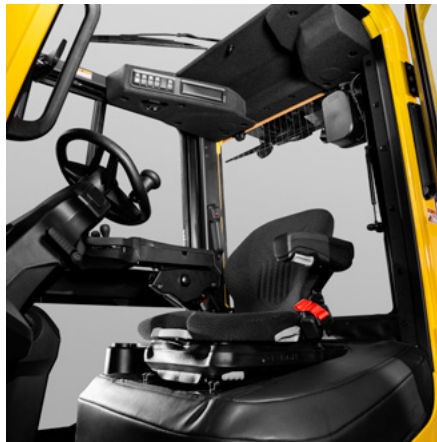
Comprehensive driver assistance systems

RIGHT FOR YOUR APPLICATION

MODULAR EQUIPMENT FOR OPTIMISED HANDLING



Clear cabin provides more shoulder room and **excellent all-round visibility**



Comfort in all conditions, configurable cabin options including air conditioning



Easy access, low level step reduces operator fatigue and increases productivity.



Advanced features including, anti chain slack, fork laser line, load weight display, **increase productivity and reduce damage**



Up to 27% less fuel consumption than leading competitors*



The optional maintenance-free **DSS solution** helps to reduce the likelihood of tip overs and reminds operators of **safe operating practices**.

*According to standard test EN 16796, which is set out by the VDI. This compares all values of fuel consumption that have been published by each of the following European based manufacturers. Linde, STILL, Jungheinrich, Toyota, Nissan, Komatsu.



HYSTER EUROPE

Centennial House, Frimley Business Park, Frimley, Surrey, GU16 7SG, England.

T: +44 (0) 1276 538500 | E: info@hyster.com | www.hyster.com

HYSTER EUROPE

HYSTER-YALE UK LIMITED trading as Hyster Europe.

Registered Address: Centennial House, Building 4.5, Frimley Business Park, Frimley, Surrey GU16 7SG, United Kingdom.

Registered in England and Wales. Company Registration Number: 02636775.

©2024 HYSTER-YALE UK LIMITED, all rights reserved. HYSTER,  and STRONG PARTNERS. TOUGH TRUCKS. are trademarks of HYSTER-YALE Group, Inc. Hyster products are subject to change without notice. Forklift trucks illustrated may feature optional equipment.



10004925

