

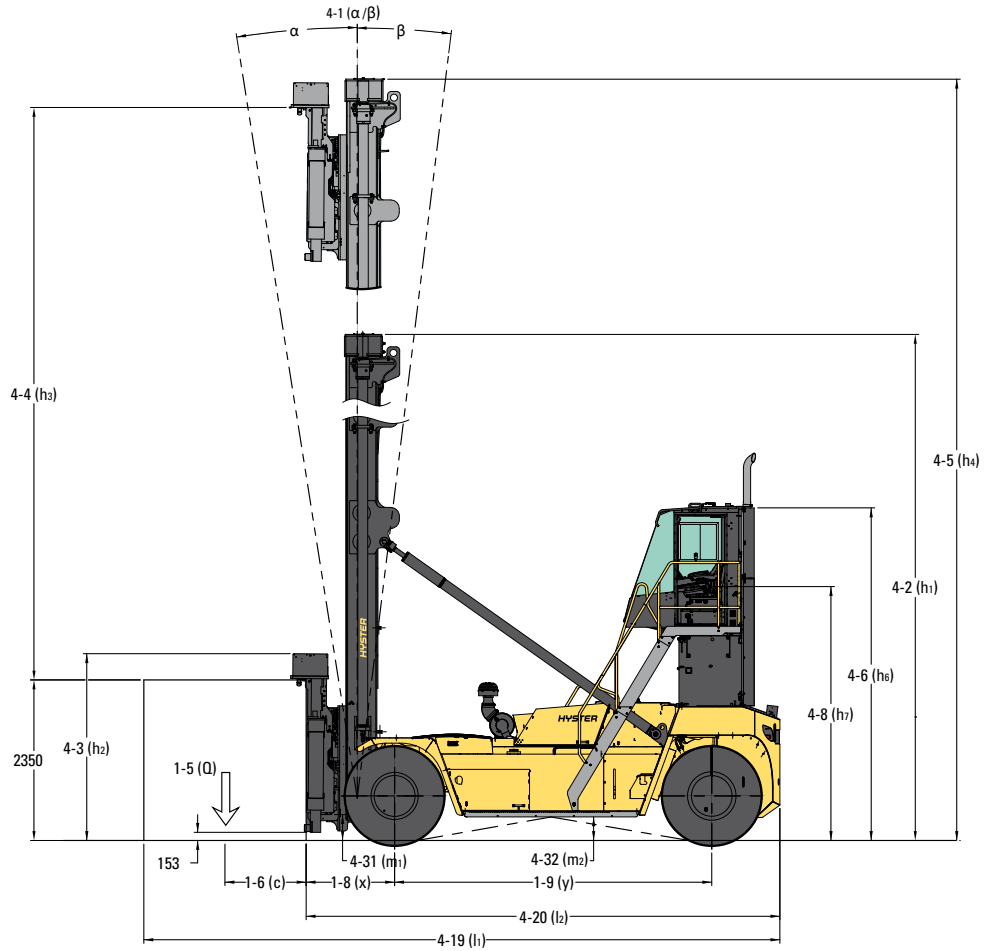
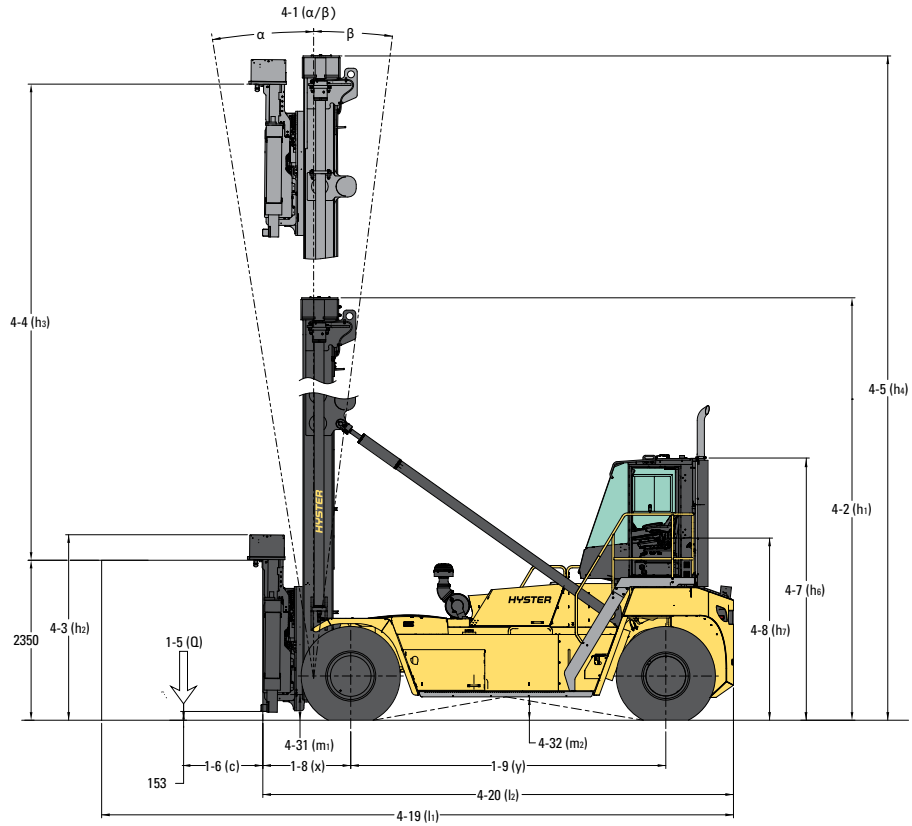
H180-230XD-EC/D SERIES



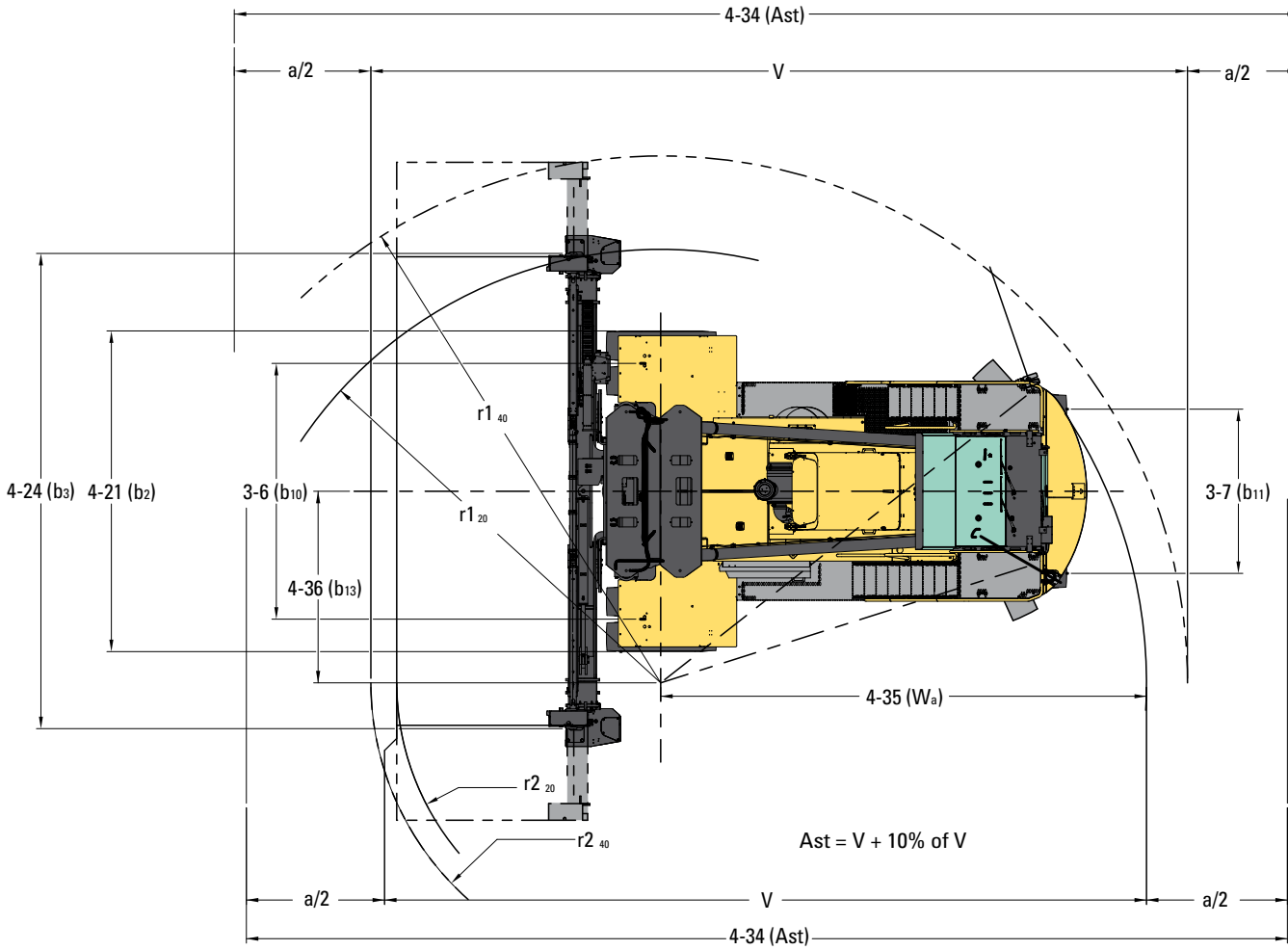
EMPTY CONTAINER HANDLER PRODUCT TECHNICAL GUIDE



DIMENSIONS



DIMENSIONS



- r_1 = radius of swing of container rear corner
- r_2 = radius of swing of container front corner
- W_s = outside turning radius of the truck
- a = total operating clearance:
= 200 mm (100 mm each side acc. VDI) see VDI line 4-34-3 and 4-34-4
- V = (theoretical) 90° stacking aisle width, no intrusive stacking:
 $V = r_2 + \text{the larger of } r_1, \text{ or } W_s$
- Ast = (practical) 90° stacking aisle width, no intrusive stacking and with clearance:
 $Ast = V + a$

H180XD-EC6 | H180XD-EC7 SPECIFICATIONS

				HYSTER				HYSTER							
				H180XD-EC6				H180XD-EC7							
GENERAL	1-1	Manufacturer				HYSTER				HYSTER					
	1-2	Model designation (AM)				H180XD-EC6				H180XD-EC7					
	1-3	Powertrain / drivetrain				Diesel				Diesel					
	1-4	Operator type				Seated				Seated					
	1-5	Load capacity at load center, nominal (1) AM	Q	lb	kg	18,000		8,165		18,000		8,165			
	1-6	Load center	c	in	mm	48		1,220		48		1,220			
	1-8	Load distance	x	in	mm	53		1,357		53		1,357			
	1-9	Wheelbase	y	in	mm	177		4,500		177		4,500			
	1-10	Container stacking height, 8'6" / 9'6"			#	6 / 5				7 / 6					
	WEIGHT	2-1	Service weight		lb	kg	78,392		35,558		81,377		36,912		
2-2		Axle loading with load, front / rear		lb	kg	77,852	35,313	18,065	8,194	81,117	36,794	17,787	8,068		
2-3		Axle loading without load, front / rear		lb	kg	50,563	22,935	27,829	12,623	53,828	24,416	27,551	12,497		
WHEELS	3-1	Tire type		Type	Pneumatic				Pneumatic						
	3-2	Tire size, front			14.00-24 24PR				14.00-24 24PR						
	3-3	Tire size, rear			14.00-24 24PR				14.00-24 24PR						
	3-5	Number of tires, front / rear (X driven)		#	x4 / 2				x4 / 2						
	3-6	Tread, front	b ₁₀	in	mm	129		3,282		129		3,282			
	3-7	Tread, rear	b ₁₁	in	mm	83		2,108		83		2,108			
DIMENSIONS	4-1	Mast tilt, forward / backward		α/β	Degree				4 / 3						
	4-2	Height, mast lowered		h ₁	in	mm	374		9,495		425		10,795		
	4-3	Freelift		h ₂	in	mm	0		0		0		0		
	4-4	Lift		h ₃	in	mm	545		13,850		648		16,450		
	4-4-1	Lift minimum (3)		h _{3.1.1}	in	mm	91		2,318		91		2,318		
	4-4-2	Lift maximum (3)		h _{3.1.2}	in	mm	637		16,168		739		18,768		
	4-5	Height, mast extended			in	mm	646		16,420		749		19,020		
	4-7-1	Height of overhead guard (closed cab)			in	mm	149		3,791		149		3,791		
	4-7-3	Height of overhead guard (closed cab w/ strobe light)			in	mm	149		3,791		149		3,791		
	4-7-4	Height of overhead guard (closed cab w/ work lights)			in	mm	156		3,961		156		3,961		
	4-8	Seat height to SIP (3) (4)			in	mm	104		2,650		104		2,650		
	4-19	Overall length			l ₁	in	mm	365		9,264		365		9,264	
	4-20	Length to face of spreader			l ₂	in	mm	269		6,824		269		6,824	
	4-21	Overall width across drive tires			b ₂	in	mm	162		4,110		162		4,110	
	4-23	Width across spreader, retracted / extended				in	mm	240	6,084	481	12,218	240	6,084	481	12,218
	4-30	Sideshift				in	mm	+/-24		+/-600		+/-24		+/-600	
4-31	Ground clearance, lowest point			m ₁	in	mm	12		293		12		293		
4-32	Ground clearance, center of wheelbase			m ₂	in	mm	15		383		15		383		
4-33	Aisle width with 20' container; no operating clearance * REDUCED / FULL stroke			Ast ₂₀	in	mm	418	10,614	400	10,144	418	10,614	400	10,144	
4-34	Aisle width with 40' container; no operating clearance * REDUCED / FULL stroke			Ast ₄₀	in	mm	558	14,180	546	13,875	558	14,180	546	13,875	
4-35	Outside turning radius, reduced / full stroke			W _a	in	mm	268	6,797	249	6,327	268	6,797	249	6,327	
4-36	Internal turning radius, reduced / full stroke			b ₁₃	in	mm	64	1,619	30	763	64	1,619	30	763	
PERFORMANCE	PERFORMANCE						Tier 3 / Stage IIIA				Tier 3 / Stage IIIA				
	5-1	Travel speed, with / without load			mph	km/h	12.4	20	15.5	25	12.4	20	15.5	25	
	5-2	Lifting speed, with / without load			ft/min	m/s	100	0.51	132	0.67	100	0.51	132	0.67	
	5-3	Lowering speed with / without load			ft/min	m/s	108	0.55	108	0.55	108	0.55	108	0.55	
	5-5	Drawbar pull - 1 mph (1.6 km/h), with / without load			lb	kN	36,000	160	36,200	161	36,000	160	36,200	161	
	5-6	Drawbar pull - max, with / without load			lb	kN	43,400	193	43,600	194	43,200	192	43,600	194	
	5-7	Gradeability - 1 mph (1.6 km/h), with / without load (5)				%	40 / 39				39 / 38				
	5-8	Gradeability - max, with / without load (5)				%	49 / 39				48 / 38				

H200XD-EC7 | H200XD-EC8 SPECIFICATIONS

					HYSTER				HYSTER								
					H200XD-EC7				H200XD-EC8								
GENERAL	1-1	Manufacturer			HYSTER				HYSTER								
	1-2	Model designation (AM)			H200XD-EC7				H200XD-EC8								
	1-3	Powertrain / drivetrain			Diesel				Diesel								
	1-4	Operator type			Seated				Seated								
	1-5	Load capacity at load center, nominal (1) AM	Q	lb	kg	20,000		9,072		20,000		9,072					
	1-6	Load center	c	in	mm	48		1,220		48		1,220					
	1-8	Load distance	x	in	mm	53		1,357		53		1,357					
	1-9	Wheelbase	y	in	mm	177		4,500		177		4,500					
	1-10	Container stacking height, 8'6" / 9'6"		#	#	7 / 6				8 / 7							
	WEIGHT	2-1	Service weight			lb	kg	85,755		38,898		91,463		41,487			
2-2		Axle loading with load, front / rear			lb	kg	84,201	38,193	21,286	9,655	85,751	38,896	23,237	10,540			
2-3		Axle loading without load, front / rear			lb	kg	53,482	24,259	32,273	14,639	57,236	25,962	31,830	14,438			
WHEELS	3-1	Tire type			Type				Pneumatic bias ply				Pneumatic radial				
	3-2	Tire size, front							14.00-24 24PR				14.00-R24				
	3-3	Tire size, rear							14.00-24 24PR				14.00-R24				
	3-5	Number of tires, front / rear (X driven)			#				x4 / 2				x4 / 2				
	3-6	Tread, front			b ₁₀	in	mm	129		3,282		138		3,507			
	3-7	Tread, rear			b ₁₁	in	mm	83		2,108		83		2,108			
DIMENSIONS	4-1	Mast tilt, forward / backward			α/β	Degree			4 / 3				4 / 3				
	4-2	Height, mast lowered			h ₁	in	mm	425		10,795		476		12,095			
	4-3	Freelift			h ₂	in	mm	0		0		0		0			
	4-4	Lift			h ₃	in	mm	648		16,450		750		19,050			
	4-4-1	Lift minimum (3)			h _{3.1.1}	in	mm	91		2,318		91		2,318			
	4-4-2	Lift maximum (3)			h _{3.1.2}	in	mm	739		18,768		841		21,368			
	4-5	Height, mast extended				in	mm	749		19,020		851		21,620			
	4-7-1	Height of overhead guard (closed cab)				in	mm	149		3,791		149		3,791			
	4-7-2	Height of overhead guard (closed cab w/ airco)				in	mm	149		3,791		149		3,791			
	4-7-3	Height of overhead guard (closed cab w/ strobe light)				in	mm	149		3,791		149		3,791			
	4-7-4	Height of overhead guard (closed cab w/ work lights)				in	mm	156		3,961		156		3,961			
	4-8	Seat height to SIP (3) (4)			h ₇	in	mm	104		2,650		104		2,650			
	4-19	Overall length			l ₁	in	mm	365		9,264		365		9,264			
	4-20	Length to face of spreader			l ₂	in	mm	269		6,824		269		6,824			
	4-21	Overall width across drive tires			b ₂	in	mm	162		4,110		171		4,335			
	4-23	Width across spreader, retracted / extended				in	mm	240	6,084	481	12,218	240	6,084				
	4-30	Sideshift				in	mm	+/-24		+/-600		+/-24		+/-600			
	4-31	Ground clearance, lowest point			m ₁	in	mm	12		293		12		293			
	4-32	Ground clearance, center of wheelbase			m ₂	in	mm	15		383		15		383			
	4-33	Aisle width with 20' container; no operating clearance * REDUCED / FULL stroke			Ast ₂₀	in	mm	418	10,614	400	10,144	418	10,614	400	10,144		
4-34	Aisle width with 40' container; no operating clearance * REDUCED / FULL stroke			Ast ₄₀	in	mm	558	14,180	546	13,875	558	14,180	546	13,875			
4-35	Outside turning radius, reduced / full stroke			W _a	in	mm	268	6,797	249	6,327	268	6,797	249	6,327			
4-36	Internal turning radius, reduced / full stroke			b ₁₃	in	mm	64	1,619	30	763	59	1,507	26	651			
PERFORMANCE	PERFORMANCE				Tier 3 / Stage IIIA				Tier 3 / Stage IIIA								
	5-1	Travel speed, with / without load				mph	km/h	12.4	20	15.5	25	12.4	20	15.5	25		
	5-2	Lifting speed, with / without load				ft/min	m/s	100	0.51	132	0.67	91	0.46	120	0.61		
	5-3	Lowering speed with / without load				ft/min	m/s	108	0.55	108	0.55	108	0.55	108	0.55		
	5-5	Drawbar pull - 1 mph (1.6 km/h), with / without load				lb	kN	35,700	159	36,200	161	33,000	147	33,500	149		
	5-6	Drawbar pull - max, with / without load				lb	kN	43,200	192	43,600	194	40,000	178	40,500	180		
	5-7	Gradeability - 1 mph (1.6 km/h), with / without load (5)				%				36 / 36				31 / 35			
	5-8	Gradeability - max, with / without load (5)				%				45 / 36				39 / 35			

H200XD-ECD7 | H190XD-ECD8 SPECIFICATIONS

					HYSTER				HYSTER				
					H200XD-ECD7				H190XD-ECD8				
GENERAL	1-1	Manufacturer											
	1-2	Model designation (AM)											
	1-3	Powertrain / drivetrain											
	1-4	Operator type											
	1-5	Load capacity at load center, nominal (1) AM	Q	lb	kg	20,000	9,072		19,000	8,618			
	1-6	Load center	c	in	mm	48	1,220		48	1,220			
	1-8	Load distance	x	in	mm	52	1,309		52	1,309			
	1-9	Wheelbase	y	in	mm	177	4,500		177	4,500			
	1-10	Container stacking height, 8'6" / 9'6"		#	#	6 + 1 / 5 + 1				7 + 1 / 6 + 1			
	WEIGHT	2-1	Service weight										
2-2		Axle loading with load, front / rear		lb	kg	86,174	39,088	20,679	9,380	89,512	40,602	20,395	9,251
2-3		Axle loading without load, front / rear		lb	kg	55,182	25,030	31,830	14,438	62,929	28,544	31,546	14,309
WHEELS	3-1	Tire type			Type	Pneumatic radial				Pneumatic radial			
	3-2	Tire size, front				14.00-R24				14.00-R24			
	3-3	Tire size, rear				14.00-R24				14.00-R24			
	3-5	Number of tires, front / rear (X driven)		#		x4 / 2				x4 / 2			
	3-6	Tread, front	b ₁₀	in	mm	129	3,282		129	3,282			
	3-7	Tread, rear	b ₁₁	in	mm	83	2,108		83	2,108			
	DIMENSIONS	4-1	Mast tilt, forward / backward	α/β		Degree	4 / 3				4 / 3		
4-2		Height, mast lowered	h ₁	in	mm	374	9,495		425	10,795			
4-3		Freelift	h ₂	in	mm	0	0		0	0			
4-4		Lift	h ₃	in	mm	545	13,850		648	16,450			
4-4-1		Lift minimum (3)	h _{3.1.1}	in	mm	97	2,472		97	2,472			
4-4-2		Lift maximum (3)	h _{3.1.2}	in	mm	643	16,322		745	18,922			
4-5		Height, mast extended		in	mm	646	16,420		749	19,020			
4-7-1		Height of overhead guard (closed cab)		in	mm	149	3,791		149	3,791			
4-7-2		Height of overhead guard (closed cab w/ airco)		in	mm	149	3,791		149	3,791			
4-7-3		Height of overhead guard (closed cab w/ strobe light)		in	mm	149	3,791		149	3,791			
4-7-4		Height of overhead guard (closed cab w/ work lights)		in	mm	156	3,961		156	3,961			
4-8		Seat height to SIP (4)	h ₇	in	mm	104	2,650		104	2,650			
4-19		Overall length	l ₁	in	mm	365	9,264		363	9,214			
4-20		Length to face of spreader	l ₂	in	mm	267	6,776		267	6,776			
4-21		Overall width across drive tires	b ₂	in	mm	162	4,110		162	4,110			
4-23		Width across spreader, retracted / extended		in	mm	259	6,566	500	12,700	259	6,566	500	12,700
4-30		Sideshift		in	mm	+/-24		+/-600		+/-24		+/-600	
4-31		Ground clearance, lowest point	m ₁	in	mm	12	293		12	293			
4-32	Ground clearance, center of wheelbase	m ₂	in	mm	15	383		15	383				
4-33	Aisle width with 20' container; no operating clearance * REDUCED / FULL stroke	Ast ₂₀	in	mm	416	10,566	398	10,096	416	10,566	398	10,096	
4-34	Aisle width with 40' container; no operating clearance * REDUCED / FULL stroke	Ast ₄₀	in	mm	566	14,382	554	14,081	566	14,382	554	14,081	
4-35	Outside turning radius, reduced / full stroke	W _a	in	mm	268	6,797	249	6,327	268	6,797	249	6,327	
4-36	Internal turning radius, reduced / full stroke	b ₁₃	in	mm	64	1,619	30	763	64	1,619	30	763	
PERFORMANCE	PERFORMANCE					Tier 3 / Stage IIIA				Tier 3 / Stage IIIA			
	5-1	Travel speed, with / without load		mph	km/h	12.4	20	15.5	25	12.4	20	15.5	25
	5-2	Lifting speed, with / without load		ft/min	m/s	91	0.46	120	0.61	91	0.46	120	0.61
	5-3	Lowering speed with / without load		ft/min	m/s	108	0.55	108	0.55	108	0.55	108	0.55
	5-5	Drawbar pull - 1 mph (1.6 km/h), with / without load		lb	kN	33,300	148	33,500	149	33,000	147	33,500	149
	5-6	Drawbar pull - max, with / without load		lb	kN	40,000	178	40,500	180	40,000	178	40,500	180
	5-7	Gradeability - 1 mph (1.6 km/h), with / without load (5)			%	33 / 39				32 / 38			
	5-8	Gradeability - max, with / without load (5)			%	41 / 39				39 / 38			

H210XD-ECD8 | H230XD-ECD8 | H230XD-ECD9 SPECIFICATIONS

					HYSTER				HYSTER				HYSTER					
					H210XD-ECD8				H230XD-EC8				H230XD-ECD9					
GENERAL	1-1	Manufacturer																
	1-2	Model designation (AM)																
	1-3	Powertrain / drivetrain			Diesel				Diesel				Diesel					
	1-4	Operator type			Seated				Seated				Seated					
	1-5	Load capacity at load center, nominal (1) AM	Q	lb	kg	21,000	9,525	23,000	10,433	23,000	10,433	23,000	10,433					
	1-6	Load center	c	in	mm	48	1,220	48	1,220	48	1,220	48	1,220					
	1-8	Load distance	x	in	mm	52	1,309	52	1,309	52	1,309	52	1,309					
	1-9	Wheelbase	y	in	mm	177	4,500	177	4,500	177	4,500	177	4,500					
	1-10	Container stacking height, 8'6" / 9'6"	#	#	7 + 1 / 6 + 1				7 + 1 / 6 + 1				8 + 1 / 7 + 1					
	WEIGHT	2-1	Service weight			lb	kg	92,343	41,886	94,461	42,847	97,440	44,198					
2-2		Axle loading with load, front / rear AM			lb	kg	92,960	42,166	21,427	9,719	96,408	43,730	22,436	10,177	99,664	45,207	22,024	9,990
2-3		Axle loading without load, front / rear			lb	kg	58,524	26,546	33,817	15,339	58,528	26,548	35,933	16,299	61,785	28,025	35,653	16,172
WHEELS	3-1	Tire type			Type				Pneumatic radial				Pneumatic radial					
	3-2	Tire size, front							14.00-R24				14.00-R24					
	3-3	Tire size, rear							14.00-R24				14.00-R24					
	3-5	Number of tires, front / rear (X driven)			#				x4 / 2				x4 / 2					
	3-6	Tread, front	b ₁₀	in	mm	138	3,507	138	3,507	138	3,507	138	3,507					
	3-7	Tread, rear	b ₁₁	in	mm	83	2,108	83	2,108	83	2,108	83	2,108					
DIMENSIONS	4-1	Mast tilt, forward / backward			α/β				4 / 3				4 / 3					
	4-2	Height, mast lowered			h ₁	in	mm	425	10,795	425	10,795	476	12,095					
	4-3	Freelift			h ₂	in	mm	0	0	0	0	0	0					
	4-4	Lift			h ₃	in	mm	648	16,450	648	16,450	750	19,050					
	4-4-1	Lift minimum (3)			h _{3,1.1}	in	mm	97	2,472	97	2,472	97	2,472					
	4-4-2	Lift maximum (3)			h _{3,1.2}	in	mm	745	18,922	745	18,922	847	21,522					
	4-5	Height, mast extended				in	mm	749	19,020	749	19,020	851	21,620					
	4-7-1	Height of overhead guard (closed cab)				in	mm	149	3,791	149	3,791	149	3,791					
	4-7-2	Height of overhead guard (closed cab w/ airco)				in	mm	149	3,791	149	3,791	149	3,791					
	4-7-3	Height of overhead guard (closed cab w/ strobe light)				in	mm	149	3,791	149	3,791	149	3,791					
	4-7-4	Height of overhead guard (closed cab w/ work lights)				in	mm	156	3,961	156	3,961	156	3,961					
	4-8	Seat height to SIP (3) (4)			h ₇	in	mm	104	2,650	104	2,650	104	2,650					
	4-19	Overall length			l ₁	in	mm	363	9,216	363	9,216	363	9,216					
	4-20	Length to face of spreader			l ₂	in	mm	267	6,776	267	6,776	267	6,776					
	4-21	Overall width across drive tires			b ₂	in	mm	162	4,110	171	4,335	171	4,335					
	4-23	Width across spreader, retracted / extended				in	mm	259	6,566	500	12,700	259	6,566	500	12,700			
4-30	Sideshift				in	mm	+/-24		+/-600		+/-24		+/-600					
4-31	Ground clearance, lowest point			m ₁	in	mm	12	293	12	293	12	293						
4-32	Ground clearance, center of wheelbase			m ₂	in	mm	15	383	15	383	15	383						
4-33	Aisle width with 20' container; no operating clearance * REDUCED / FULL stroke			Ast ₂₀	in	mm	416	10,566	398	10,096	416	10,566	398	10,096				
4-34	Aisle width with 40' container; no operating clearance * REDUCED / FULL stroke			Ast ₄₀	in	mm	566	14,382	554	14,081	566	14,382	554	14,081				
4-35	Outside turning radius, reduced / full stroke			W _a	in	mm	268	6,797	249	6,327	268	6,797	249	6,327				
4-36	Internal turning radius, reduced / full stroke			b ₁₃	in	mm	59	1,507	26	651	59	1,507	26	651				
PERFORMANCE	PERFORMANCE																	
	5-1	Travel speed, with / without load			mph	km/h	12.4	20	15.5	25	12.4	20	15.5	25	12.4	20	15.5	25
	5-2	Lifting speed, with / without load			ft/min	m/s	91	0.46	120	0.61	91	0.46	120	0.61	91	0.46	120	0.61
	5-3	Lowering speed with / without load			ft/min	m/s	108	0.55	108	0.55	108	0.55	108	0.55	108	0.55	108	0.55
	5-5	Drawbar pull - 1 mph (1.6 km/h), with / without load			lb	kN	33,000	147	33,500	149	33,000	147	33,500	149	33,000	147	33,300	148
	5-6	Drawbar pull - max, with / without load			lb	kN	40,000	178	40,500	180	39,800	177	40,200	179	39,800	177	40,200	179
	5-7	Gradeability - 1 mph (1.6 km/h), with / without load (5)							30 / 37				29 / 37					
	5-8	Gradeability - max, with / without load (5)							37 / 37				36 / 37					

POWERTRAINS

ENGINE	1-1	Manufacturer			HYSTER		HYSTER	
	1-2	Model designation			H180-200XD-EC6-8		H190-230XD-ECD7-9	
	1-3	Power type			Diesel		Diesel	
	7-1	Engine manufacturer / model			Cummins / QSB 6.7		Cummins / QSB 6.7	
	7-1a	EPA Tier Compliance			Tier 3 / Stage IIIA		Tier 3 / Stage IIIA	
	7-2	Engine power - rated	hp	kW	220@2200	164@2200	220@2200	164@2200
	7-2-1	Engine - peak	hp	kW	231@2000	172@2200	231@2000	172@2200
	7-3	Rated speed	rpm	rpm	2,200		2,200	
	7-3-1	Engine torque @ rpm (1.min)	lb-ft	N-m	700@1500	949@1500	700@1500	949@1500
	7-4	Number of cylinders / displacement	# / in3	# / cm3	6 / 408	6 / 6,690	6 / 408	6 / 6,690
	x	Turbocharger	Type		Wastegate, water-cooled		Wastegate, water-cooled	
	7-8	Alternator output	Amps		120		120	
	7-9	Electrical system voltage	V		24		24	
	7-10	Battery voltage, normal capacity	V / Ah		24 / 102		24 / 102	
DRIVE	8-0	Drive control / transmission	Type		Powershift Transmission		Powershift Transmission	
	8-1	Type of drive unit	Type		Torque Converter		Torque Converter	
	8-2	Transmission manufacturer / type	Type		ZF 5WG211		F 5WG211	
	8-2-1	Transmission speeds forward / backward	#		5 / 3		5 / 3	
	8-3	Wheel drive / drive axel manufacturer / type	Type		AxleTech / PRC 1756W3H		AxleTech / PRC 1756W3H	
	8-11	Service brake	Type		Oil immersed (wet) disc		Oil immersed (wet) disc	
	8-12	Parking brake	Type		Spring applied, dry disc on drive axle		Spring applied, dry disc on drive axle	
SPREADER	9-1	Spreader manufacturer / type	Type		Elme / 586TB MPS		Elme / 584LD PPS	
	9-1-1	Pile slope, mechanical	in	mm	+/- 8.1	+/- 205	+/- 7.6	+/- 192
	9-1-2	Pile slope total, powered	Degrees		+/- 6		+/- 6	
	9-3	Size of containers	ft		ISO 20' & 40'		ISO 20' & 40'	
	9-4	Sideshift (total)	in	mm	+/- 23.6	+/- 600	+/- 23.6	+/- 600
9-4-1	Telescoping time, extend/retract	sec	sec	10 / 13		10 / 13		
MISC	10-1	Operating pressure for attachments	psi	Mpa	3,263	22.5	3,263	22.5
	10-2	Oil volume for attachments	gpm	l/m	19	72	19	72
	10-3	Hydraulic tank capacity	gal	l	71	268	71	268
	10-4	Fuel tank capacity	gal	l	92	350	92	350
	10-4-1	DEF/AdBlue Tank capacity	gal	l	N/A	N/A	N/A	N/A
	10-5	Steering design	Type		Hydrostatic		Hydrostatic	
10-6	Number of steering rotations	#		5.0		5.0		

NOTES:

Specifications are affected by the condition of the vehicle and how it is equipped, as well as the nature and condition of the operating area. Inform your dealer of the nature and condition of the intended operating area when purchasing your Hyster® truck.

- (1) Raised cabin may result in reduced capacity since the "carry" height will be higher.
- (2) Minimum/maximum height of twistlocks
- (3) With raised cabin position add 39" / 1000 mm
- (4) SIP to drive axle plus radius of tires to ground using standard tires
- (5) Gradeability figures are provided for comparison of tractive performance, but are not intended to endorse the operation of vehicle on the stated inclines.

All capacities are according to EN1551.

All specifications and capacities are valid for trucks equipped with a Hyster® container handling spreader for handling ISO containers.

NOTICE:

Care must be exercised when handling elevated loads. Operators must be trained and must read, understand and follow the instructions contained in the Operating Manual.

All values are nominal values and they are subject to tolerances. For further information, please contact the manufacturer.


Hyster products are subject to change without notice.

Lift trucks illustrated may feature optional equipment. Values may vary with alternative configurations.

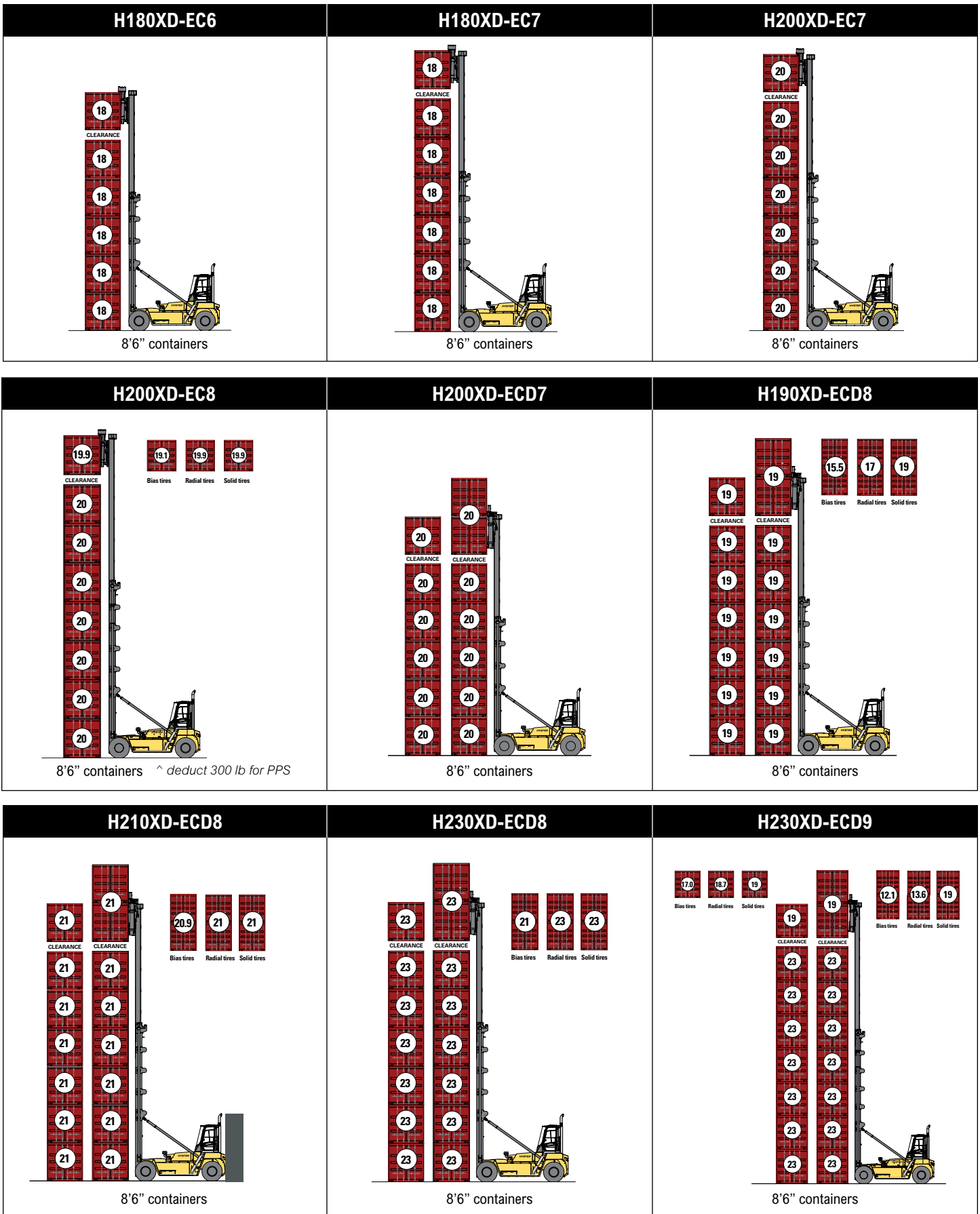
CERTIFICATION: Hyster lift trucks meet the design and construction requirements of B56.1-1969, per OSHA Section 1910.178(a)(2), and also comply with the B56.1 revision in effect at time of manufacture. Certification of compliance with the applicable ANSI standards appears on the lift truck. Performance specifications are for a truck equipped as described under Standard Equipment on this Technical Guide. Performance specifications are affected by the condition of the vehicle and how it is equipped, as well as by the nature, condition of the operating area, proper service and maintenance of the vehicle. If these specifications are critical, the proposed application should be discussed with your dealer.

NOTE: Specifications, unless otherwise listed, are for a standard truck without optional equipment.

Specification data is based on VDI 2198.

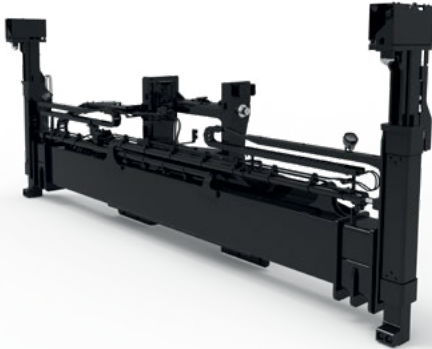
 Safety: This truck conforms to the current EU and ANSI requirements.

RATED CAPACITIES AND STACKING HEIGHTS (SHOWN IN 1,000LB)



SPREADERS AND ENGAGEMENT SYSTEMS

SINGLE CONTAINER SPREADER 588 TB



Single handling container spreader with Vertical Twist-locks

Suitable for:

- 20' or 40' ISO containers of 8' (2.44 m)
- WTP (Wide Twist-lock Position) containers
- Approx. 2.45-2.50 m wide "pallet-wide" 20' or 40' containers, with ISO-like 'chamfered' corner castings

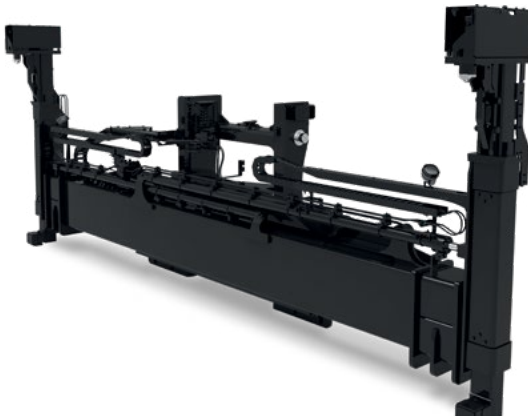
Not suitable for:

- US "Domestic" containers
- Approx. 2.45-2.60 m wide "CPC" containers (Cellular Pallet-wide Containers) with non-ISO corner castings
- Mechanical Pile Slope (standard) +/- 8.1 in (+/- 205mm)

Powered Pile Slope (optional) +/- 6 degrees

Sideshift +/- 23.6 in (+/- 600 mm)

SINGLE CONTAINER SPREADER 586 TB



Single container handling spreader with Vertical Twist-locks

Removable "inset" container blocks

Suitable for:

- 20' or 40' ISO containers of 8' (2.44 m)
- WTP (Wide Twist-lock Position) containers
- US "Domestic" containers
- Approx. 2.45-2.50 m wide "pallet-wide" 20' or 40' containers, with ISO-like 'chamfered' corner castings

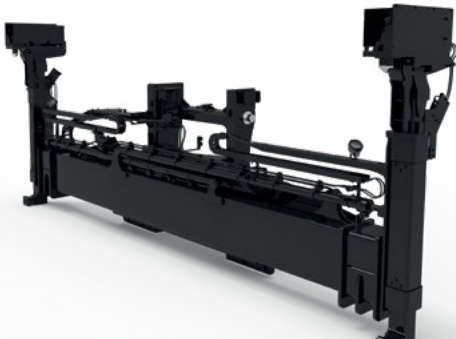
- Approx. 2.45-2.60 m wide "CPC" containers (Cellular Pallet-wide Containers) with non-ISO top corners castings

- Mechanical Pile Slope (standard) +/- 8.1 in (+/- 205mm)

- Powered Pile Slope (optional) +/- 6 degrees

- Sideshift +/- 23.6 in (+/- 600 mm)

SINGLE CONTAINER SPREADER 589 TB



Single container handling spreader with Vertical Twistlocks
Forward Reach function on the twist-locks (3.9"-6.9" / 100-176 mm)

Suitable for:

- 20' or 40' ISO containers of 8' (2.44 m)
- WTP (Wide Twist-lock Position) containers
- US "Domestic" containers
- Approx. 2.45-2.50 m wide "pallet-wide" 20' or 40' containers, with ISO-like 'chamfered' corner castings

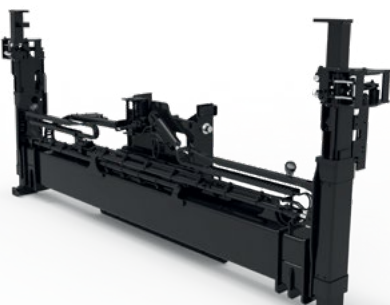
- Approx. 2.45-2.60 m wide "CPC" containers (Cellular Pallet-wide Containers) with non-ISO top corners castings

- Mechanical Pile Slope (standard) +/- 8.1 in (+/- 205mm)

- Powered Pile Slope (optional) +/- 6 degrees

- Sideshift +/- 23.6 in (+/- 600 mm)

DOUBLE CONTAINER SPREADER 584 LD



Double handle container spreader:

- Picking container(s) at the front (hooks) and side (clamps) of the corner castings

- Available with speed limitation features for laden/unladen condition

- Powered Pile Slope (standard) +/- 6 degrees

- Sideshift +/- 23.6 in (+/- 600mm)

FEATURES AND OPTIONS

PERFORMANCE	STD	OPT
Cummins QSB 6.7L diesel engine rated 220 hp tier 3 / 164 kW Stage IIIA	x	
Tier 3 / stage IIIA compliant	x	
Wastegate turbocharger, water cooled	x	
Hibernate idle	x	
Hydraulically driven on-demand cooling fan	x	
120 amp alternator	x	
Powertrain protection system	x	
ZF transmission 5WG211 5-spd fwd / 3-spd reverse auto-shifting	x	
AxleTech drive axle PRC1756 W3H with wet disc brakes	x	
LIFT	STD	OPT
On-Demand Load Sensing Hydraulic System	x	
Automatic throttle-up when lifting (in neutral or inching)	x	
Variable lap mast for low roller forces	x	
2 cylinder / 2 chain design	x	
2 Stage Non Free Lift Mast	x	
Mast tilt - 4° Forward / 3° Back	x	
Hydraulic accumulator	x	
Pressure compensated lowering		x
Hydraulic system temperature protection with performance de-rate		x
HANDLING	STD	OPT
Hyster 586TB single spreader, with removable blocks for ISO or wide containers	x	
Hyster 588TB single handling 20-40ft empty container spreader with vertical twist-locks		x
Hyster 589TB single spreader, with hydraulically adjustable head for ISO or wide containers		x
Hyster 584LD double handling 20-40ft empty container spreader with hooks and side clamps*	x	
Mast lift height sensor		x
Mechanical pile slope	x	
Powered pile slope*		x
Automatic one-touch extend/retract (20'/40') for spreader		x
Mast tilt indicator - mechanical		x
ERGONOMICS	STD	OPT
Enclosed Classic Cabin	x	
Powered tilt operator compartment for service		x
Manual tilt operator compartment for service	x	
Raised cabin height		x
Cabin automatic tip-up (for high stacking)		x
Operator presence system	x	
Mechanical suspension seat	x	
Air suspension seat		x
Deluxe air suspension seat		x
Low backrest seat	x	
High backrest seat		x
Armrest on left side	x	
Cloth seat cover	x	
Vinyl seat cover		x
2-point high visibility seatbelt	x	
Lateral seat sliding mechanism		x

Dome interior light	x	
Front, top and rear wipers	x	
"I"-pattern front wiper	x	
Left side handrails, stairway and cabin door	x	
Right side handrails, stairway and cabin door	x	
Wire mesh installed on top of operator compartment		x
7" Integrated Performance Display	x	
Dual 7" Integrated Performance Displays*		x
Joystick hydraulic control integrated in control arm	x	
Steering wheel with spinner knob	x	
Directional control lever on steering column	x	
Directional control on joystick		x
Park brake - manual	x	
Park brake - automatic		x
Interior wide angle mirrors	x	
Heater with adjustable speed fan	x	
USB outlet inside armrest	x	
24-12 DC converter with 1 socket and 2 USB outlets	x	
24-12 DC converter with 2 sockets and 2 USB outlets		x
Air conditioning	x	
Reading light		x
Sun shades on top and rear	x	
Sun visors front window		x
Cloth trainer seat with 2-point seatbelt		x
Recirculation fan	x	
Accessory mounting bar on cab front right pillar		x
Document holder on cab front right pillar	x	
Heated top window		x
Radio preparation with 2 speakers and antenna		x
VISIBILITY	STD	OPT
Steel bars under armoured glass top window	x	
External wide angle mirrors mounted on rear of front fenders	x	
Exterior mirrors mounted to handrails		x
Rear view camera system		x
LED work lights	x	
Four LED head lights mounted on front fenders	x	
Four forward work lights mounted on the cabin	x	
Two rearward work lights mounted on the cabin	x	
LED twistlock indicator lights	x	
LED stop / tail / brake lights	x	
Turn signals, hazard & marker lights (LED)	x	
2 additional LED spreader work lights pointed towards the twistlocks		x
APPEARANCE	STD	OPT
Hyster yellow paint base truck	x	
OPERATION	STD	OPT
Air horn 112 dBA	x	
Visible alarm – amber strobe light	x	
OPERATION (continued)	STD	OPT

*Standard on double handling models.


FEATURES AND OPTIONS

Audible alarm – reverse direction activated	x	
Blue LED spotlight - rear		x
Seatbelt interlock for engine start and truck operation		x
Air conditioning shut-off with open door	x	
Automatic engine shutdown with timer		x
Delayed engine shutdown for turbo cooldown		x
Lockable battery disconnect switch		x
Battery jump start connector (NATO plug)		x
Truck start with key switch and start button	x	
Operator password (display) for truck start	x	
Fuses partially replaced by electric circuit breakers		x
Non-lockable fuel cap	x	
Lockable fuel cap		x
Hyster Tracker™ wireless asset management - access / verification		x
Hyster Tracker™ wireless asset management - monitoring	x	
Tire pressure monitoring system		x
Load weight indicator		x
Auto greasing system for spreader		x
Auto greasing system for base truck, outer mast with centralized greasing system for inner mast		x
Centralized greasing system for top end mast		x
24 volt electrical system	x	
Steer wheel lug nut protection	x	
Front and rear mud guards		x
SUPPLEMENTAL	STD	OPT
Literature package	x	
Operator's manual	x	
CE certification		x
Warranty: 12 months / 2,000 hours parts & labor manufacturer's warranty	x	

*Standard on double handling models.



Hyster Company
P.O. Box 7006
Greenville, North Carolina
27835-7006

© 2025 Hyster-Yale Materials Handling, Inc., all rights reserved.
Hyster and  are trademarks of Hyster-Yale Materials Handling, Inc.
Hyster products are subject to change without notice. Trucks may be shown with optional equipment and/or features not available in all regions.