



**STRONG PARTNERS.  
TOUGH TRUCKS.™**

# **SL1.5UT**

## **ELECTRIC RIDER STACKER**

**[WWW.HYSTER.COM](http://WWW.HYSTER.COM)**

## > SL1.5UT OVERVIEW

The Hyster® electric walkie stacker SL1.5UT is designed for productivity and flexibility. Combining simple to use controls for easy maneuverability, and technology features to maximize operator performance.

### Productivity

- Maintenance free AC motors
- Multi-function display with BDI and hour meter
- Handle equipped with emergency reversing button
- Auto deceleration function
- Low speed switch
- Variable speed control
- Sideways battery removal with rollers
- Mast cushioning for low-noise operation
- Built-in pressure relief valve protects from overloads
- Emergency power disconnect switch
- 240Ah traction battery
- Cold storage configuration (option)

### Optimum Structural Design

- Low centre of gravity enhances stability
- Full free lift mast options for low overhead clearance
- Durable plastic covers
- Adjustable balance caster wheel improves stability

### Serviceability

- Low voltage protection setting extends the battery life
- CANbus technology
- Simple electronic components makes troubleshooting and servicing more efficient
- Hall effect sensors reduce wear and increase component life

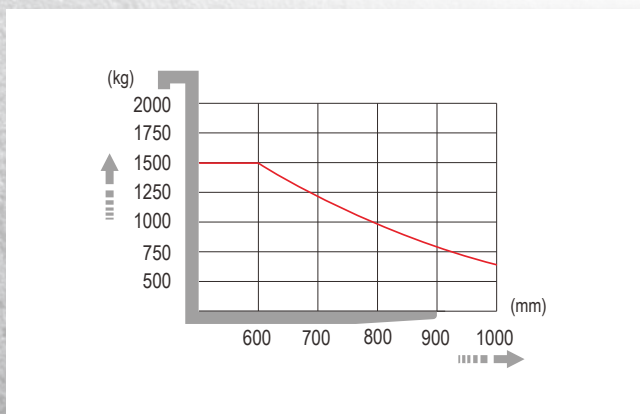


Tiller Handle (standard)  
(Left & Right Handed)

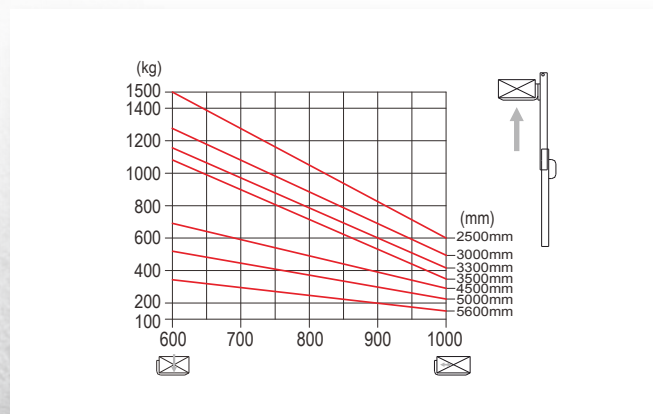


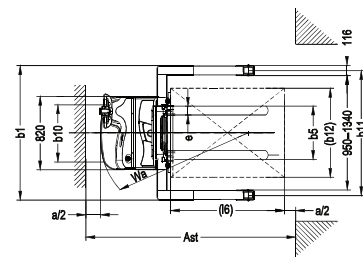
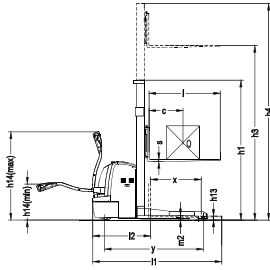
Adjustable Straddle  
Legs

### Load Center Chart



### Load Capacity Chart





MODEL		SL1.5UT							
Load capacity	Q (kg)	1500							
Load center distance	c (mm)	600							
Load distance, center of drive axle to fork	x (mm)	697							
Fork height, lowered	h13 (mm)	70							
Wheelbase	y (mm)	1420							
Axle loading, laden front/rear	kg	1440/1280							
Axle loading, unladen front/rear	kg	870/350							
Tires		polyurethane							
Tire size, front	mm	250×70							
Tire size, rear	mm	80×84							
Additional wheels (dimensions)	mm	150×60							
Wheels, number front rear (x=driven wheels)		1x+1/4							
Tread, front	b10 (mm)	520							
Tread, rear	b11 (mm)	1040-1430							
Mast height, lowered	h1 (mm)	1805	2055	2205	2305	2120	2280	2480	
Free lift	h2 (mm)	1300	1550	1700	1800	1570	1740	1940	
Max. lift height	h3 (mm)	2500	3000	3300	3500	4500	5000	5600	
Mast height, extended	h4 (mm)	3025	3525	3825	4025	5080	5560	6160	
Height of tiller in drive position min./max.	h14 (mm)	670/1300							
Overall length	l1 (mm)	1980							
Length to face of forks	l2 (mm)	915							
Overall width	b1 (mm)	1170-1560							
Fork dimensions	s/e/l (mm)	40/100/1070 (1150)							
Width overall forks	b5 (mm)	200-800							
Ground clearance, center of wheelbase	m2 (mm)	35							
Aisle width for pallets 1000x1200 crossways	Ast (mm)	2480							
Aisle width for pallets 800x1200 lengthways	Ast (mm)	2465							
Turning radius	Wa (mm)	1610							
Travel speed, laden/unladen	Km/h	5.8/6							
Lift speed, laden/unladen	m/s	0.11/0.15							
Lowering speed, laden/unladen	m/s	0.12/0.12							
Max. gradeability, laden/unladen	%	8/15							
Service brake		Electromagnetic							
Battery voltage, nominal capacity K5	V/Ah	24/240							
Battery weight	kg	240							
Battery dimensions l/w/h	mm	675x254x500							
Sound lever at the driver's ear acc. to DIN12503	dB (A)	65							
Service weight (without battery)	kg	1180/1205/1220/1230/1280/1300/1320							


## SL1.5UT POWER PLUG TYPE





Hyster Company  
P.O. Box 7006  
Greenville, North Carolina  
27835-7006  
Part No. SL1.5UT/BTG/CARIB  
4/2020 Litho in U.S.A.

Visit us online at [www.hyster.com](http://www.hyster.com) or call us at **1-800-HYSTER-1**.

Hyster,  and STRONG PARTNERS, TOUGH TRUCKS, are registered trademarks in the United States and certain other jurisdictions. Hyster products are subject to change without notice.

Trucks may be shown with optional equipment. © 2020 Hyster Company. All rights reserved.