

# H1050-1150XD-CH SERIES

---



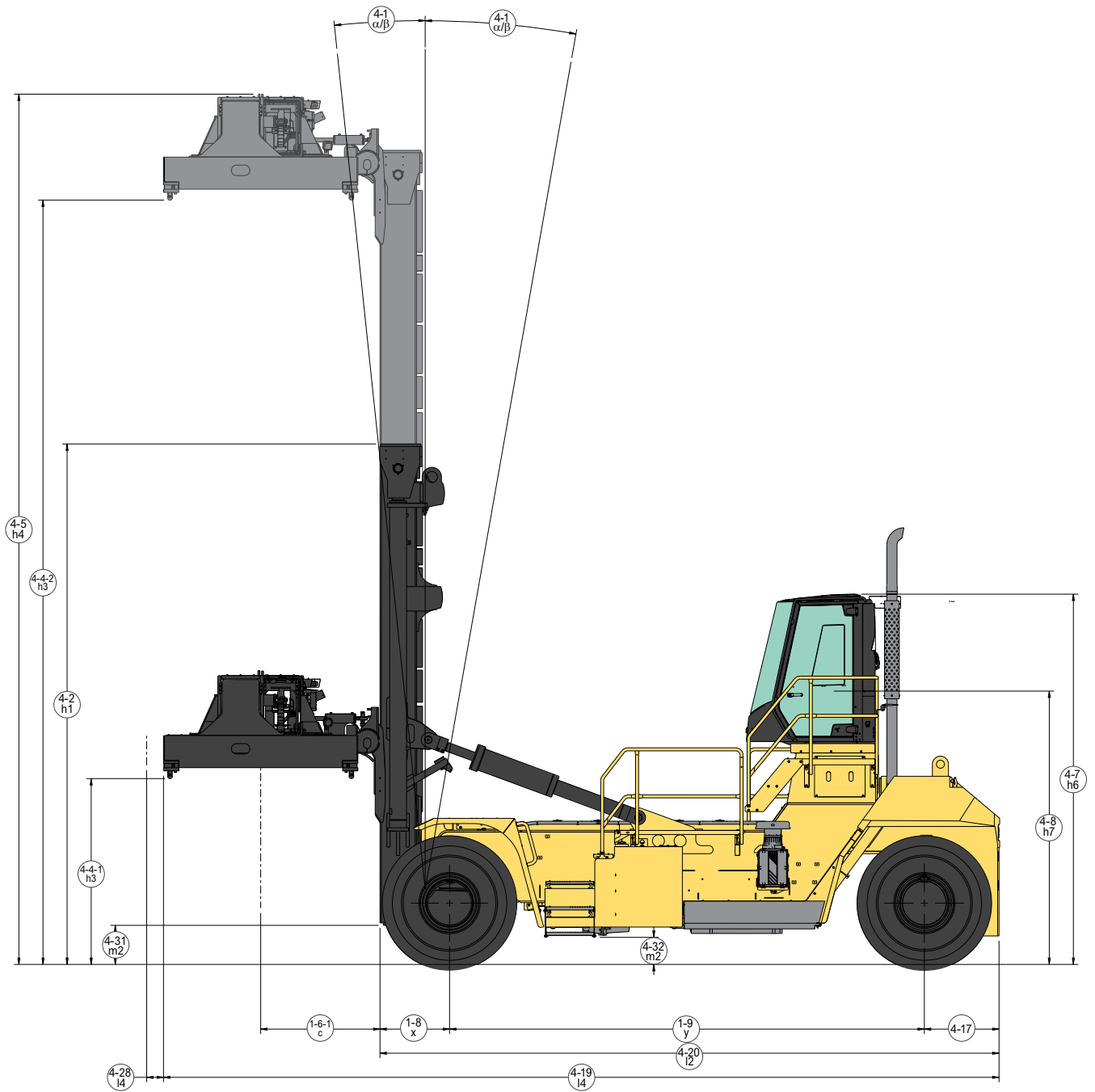
**CONTAINER HANDLER**

**PRODUCT TECHNICAL GUIDE**

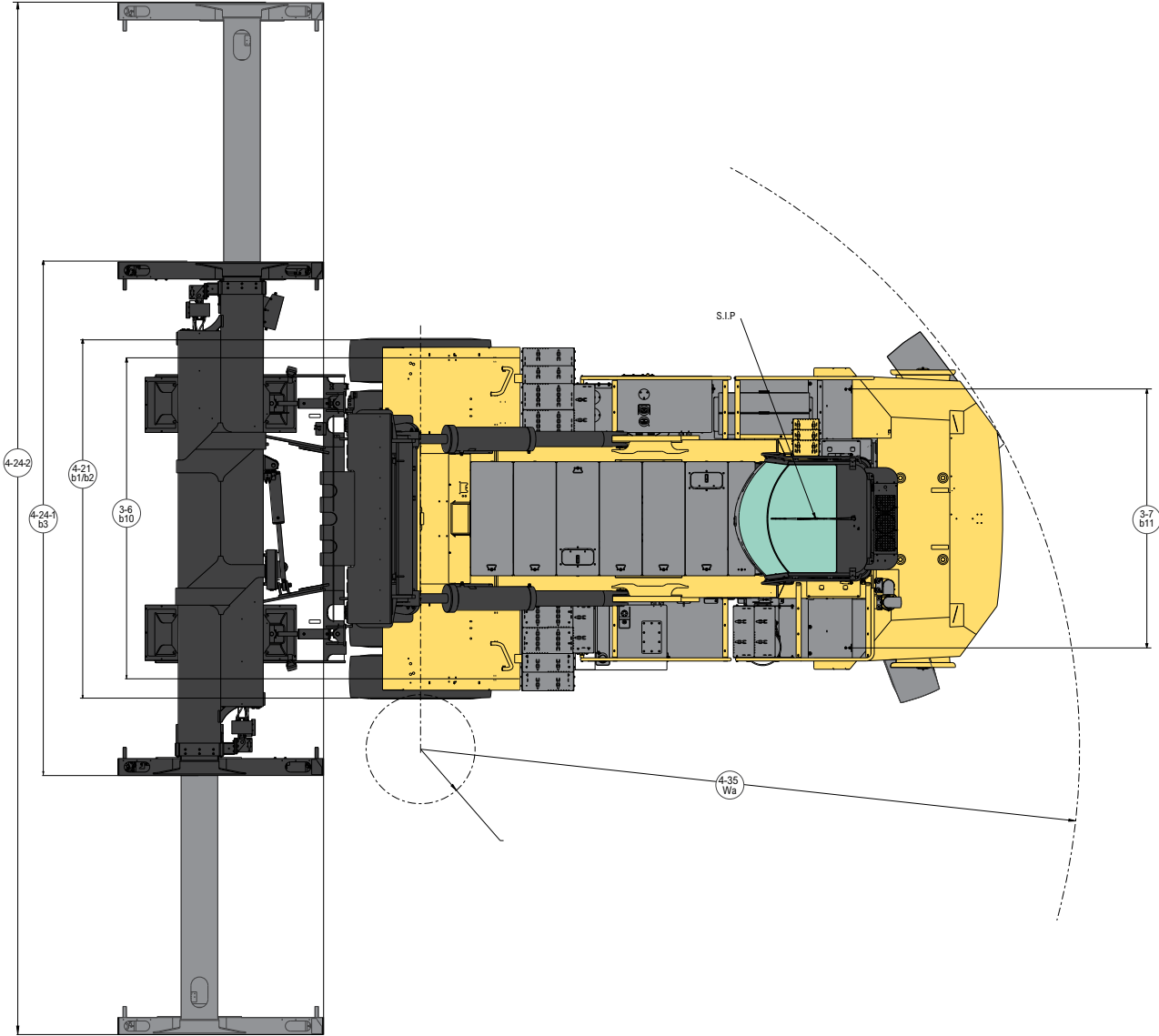


[WWW.HYSTER.COM](http://WWW.HYSTER.COM)

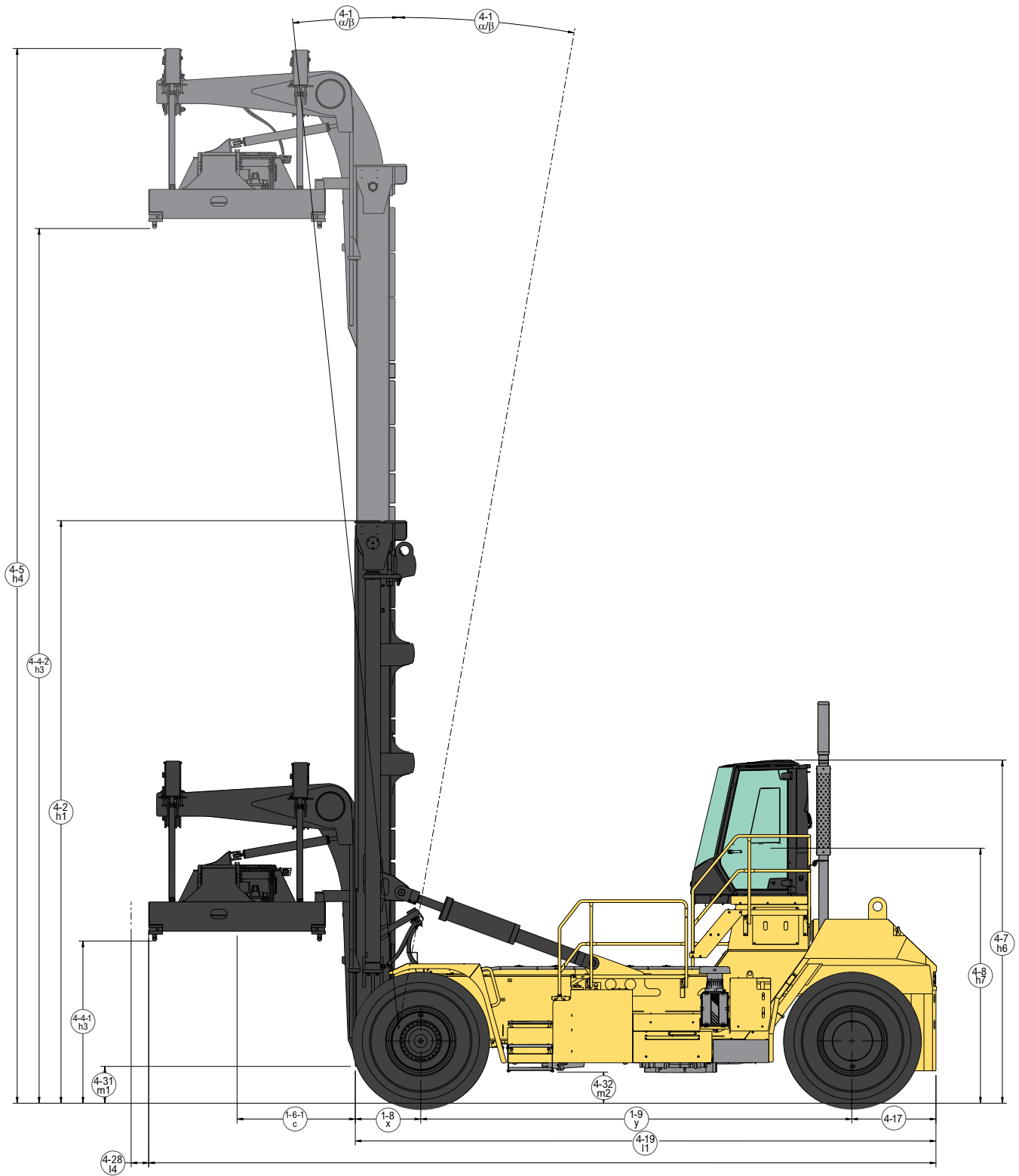
# DEDICATED CARRIAGE DIMENSIONS



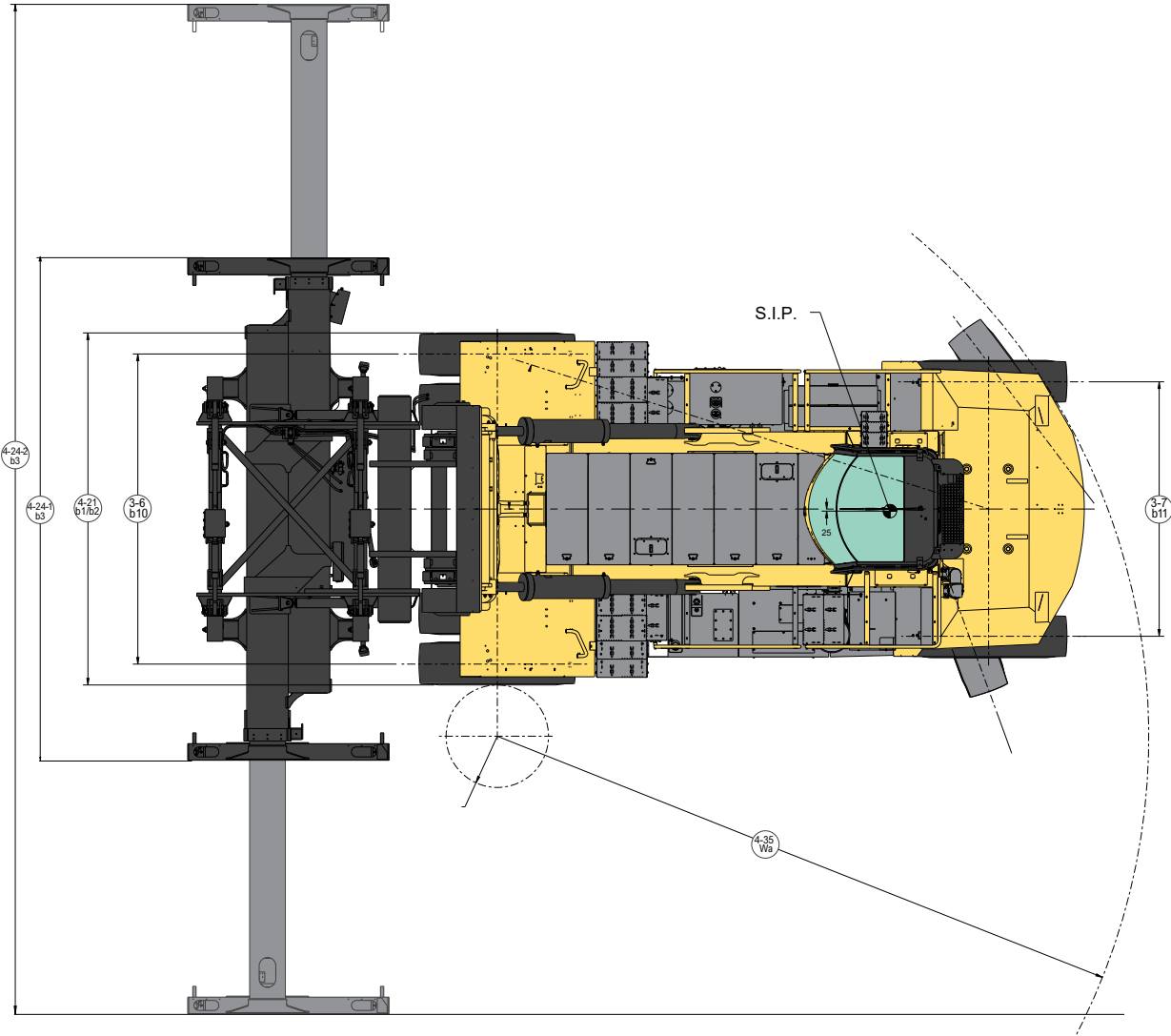
# DEDICATED CARRIAGE DIMENSIONS



# GANTRY CARRIAGE DIMENSIONS



# GANTRY CARRIAGE DIMENSIONS



# H1050XD-CH5 | H1150XD-CH 5 HIGH SPECIFICATIONS

|             |   |   |                           | HYSTER      |                 |            |          | HYSTER      |                 |            |         |         |        |
|-------------|---|---|---------------------------|-------------|-----------------|------------|----------|-------------|-----------------|------------|---------|---------|--------|
|             |   |   |                           | H1050XD-CH5 |                 |            |          | H1150XD-CH5 |                 |            |         |         |        |
| GENERAL     | 1-1   | Manufacturer  |                           |             |                 |            |          |             |                 |            |         |         |        |
|             | 1-2   | Model designation   |                           |             |                 |            |          |             |                 |            |         |         |        |
|             | 1-3   | Powertrain / drivetrain   |                           |             | Diesel          |            |          |             | Diesel          |            |         |         |        |
|             | 1-4   | Operator type   |                           |             | Seated          |            |          |             | Seated          |            |         |         |        |
|             | 1-5-1   | Rated load capacity - extended  | Q                         | lb          | kg              | 82,670     | 37,500   | 90,390      | 41,000          | 90,390     | 41,000  |         |        |
|             | 1-5-2   | Rated load capacity - retracted   |                           | lb          | kg              | 90,390     | 41,000   | 90,390      | 41,000          | 90,390     | 41,000  |         |        |
|             | 1-6-1   | Load center distance - extended   | c                         | in          | mm              | 69         | 1,739    | 69          | 1,739           | 69         | 1,739   |         |        |
|             | 1-6-2   | Load center distance - retracted  |                           | in          | mm              | 59         | 1,509    | 59          | 1,509           | 59         | 1,509   |         |        |
|             | 1-8   | Load distance (1)   | x                         | in          | mm              | 35.4       | 900      | 35.4        | 900             | 35.4       | 900     |         |        |
|             | 1-9   | Wheelbase   | y                         | in          | mm              | 232        | 5,900    | 232         | 5,900           | 232        | 5,900   |         |        |
| 1-10-1      | Stacking height at first row (number x container height)          |   | 5 x 9'6"                  |             |                 |            | 5 x 9'6" |             |                 |            |         |         |        |
| 1-10-2      | Stacking height at first row (number x container height)          |   | 5 x 8'6"                  |             |                 |            | 5 x 8'6" |             |                 |            |         |         |        |
| WEIGHTS     | 2-1   | Total truck weight without load (2)                                     |                           | lb          | kg              | 162,950    | 73,913   | 169,231     | 76,762          | 169,231    | 76,762  |         |        |
|             | 2-2   | Axle loading with load, front / rear                                    |                           | lb          | kg              | 232,114    | 21,226   | 105,285     | 9,628           | 232,466    | 27,154  | 105,445 | 12,317 |
|             | 2-3   | Axle loading without load, front / rear                                 |                           | lb          | kg              | 105,447    | 57,503   | 47,830      | 26,083          | 105,793    | 63,438  | 47,987  | 28,775 |
| WHEELS      | 3-1   | Tire type   |                           |             | Pneumatic       |            |          |             | Pneumatic       |            |         |         |        |
|             | 3-2   | Tire size, front  |                           |             | 18.00 - 25 40PR |            |          |             | 18.00 - 25 40PR |            |         |         |        |
|             | 3-3   | Tire size, rear   |                           |             | 18.00 - 25 40PR |            |          |             | 18.00 - 25 40PR |            |         |         |        |
|             | 3-5   | Number of tires, front / rear (X driven)                                |                           |             | x 4 / 2         |            |          |             | x 4 / 2         |            |         |         |        |
|             | 3-6   | Track width, front  | b10                       | in          | mm              | 146        | 3,703    | 146         | 3,703           | 146        | 3,703   |         |        |
|             | 3-7   | Track width, rear   | b11                       | in          | mm              | 120        | 3,060    | 120         | 3,060           | 120        | 3,060   |         |        |
|             | DIMENSIONS  | 4-1   | Mast tilt, forward / back |             |                 | α/β Degree |          |             |                 | 6°F / 10°B |         |         |        |
| 4-2         |   | Height, mast lowered (3)  | h1                        | in          | mm              | 368        | 9,357    | 368         | 9,352           | 368        | 9,352   |         |        |
| 4-3         |   | Freelift  | h2                        | in          | mm              | 0          | 0        | 0           | 0               | 0          | 0       |         |        |
| 4-4-1       |   | Lift height at load center c1, minimum (4)                              | h3                        | in          | mm              | 91         | 2,303    | 91          | 2,303           | 91         | 2,303   |         |        |
| 4-4-2       |   | Lift height at load center c1, maximum (4)                              | h3                        | in          | mm              | 589        | 14,953   | 589         | 14,953          | 589        | 14,953  |         |        |
| 4-5         |   | Height, extended  | h4                        | in          | mm              | 681        | 17,298   | 681         | 17,293          | 681        | 17,293  |         |        |
| 4-7         |   | Height, top of operator compartment (closed cab)                        | h6                        | in          | mm              | 183.5      | 4,660    | 183.5       | 4,660           | 183.5      | 4,660   |         |        |
| 4-7-1       |   | Height, top of operator compartment (closed cab w/o A/C)                |                           | in          | mm              | 185.2      | 4,703    | 185.2       | 4,703.0         | 4,703      | 4,758   |         |        |
| 4-7-2       |   | Height, top of operator compartment (closed cab w A/C)                  |                           | in          | mm              | 187.3      | 4,758    | 187.3       | 4,758           | 187.3      | 4,758   |         |        |
| 4-7-3       |   | Height, top of operator compartment ( w strobe light)                   |                           | in          | mm              | 188.2      | 4,780    | 188.2       | 4,780           | 188.2      | 4,780   |         |        |
| 4-7-4       |   | Height, top of operator compartment (closed cab w work lights)          |                           | in          | mm              | 190.5      | 4,839    | 190.5       | 4,839           | 190.5      | 4,839   |         |        |
| 4-7-5       |   | Height, top of operator compartment (closed cab w A/C and strobe light) |                           | in          | mm              | 188.2      | 4,780    | 188.2       | 4,780           | 188.2      | 4,780   |         |        |
| 4-8         |   | Seat height to seat point index (5)                                     | h7                        | in          | mm              | 138.8      | 3,525    | 138.8       | 3,525           | 138.8      | 3,525   |         |        |
| 4-17        |   | Overhang  |                           | in          | mm              | 43         | 1,093    | 43          | 1,093           | 43         | 1,093   |         |        |
| 4-19        |   | Overall length  | l1                        | in          | mm              | 421        | 10,698   | 421         | 10,698          | 421        | 10,698  |         |        |
| 4-20        |   | Length to face of spreader  | l2                        | in          | mm              | 314        | 7,968    | 314         | 7,968           | 314        | 7,968   |         |        |
| 4-21        |   | Overall width across all of truck                                       | b1/b2                     | in          | mm              | 165        | 4,200    | 165         | 4,200           | 165        | 4,200   |         |        |
| 4-23        |   | Carriage spreader   |                           |             | Type            |            |          |             | MPS Gantry      |            |         |         |        |
| 4-24-1      |   | Spreader width, retracted   | b3                        | in          | mm              | 240        | 6,100    | 240         | 6,100           | 240        | 6,100   |         |        |
| 4-24-2      |   | Spreader width, extended  |                           | in          | mm              | 480        | 12,200   | 480         | 12,200          | 480        | 12,200  |         |        |
| 4-28        |   | Reach distance  | l4                        | in          | mm              | +/- 9.1    | +/- 230  | +/- 9.1     | +/- 230         | +/- 9.1    | +/- 230 |         |        |
| 4-30        |   | Reach lateral from vehicle center line                                  | b8                        | in          | mm              | +/- 15.7   | +/- 400  | +/- 15.7    | +/- 400         | +/- 15.7   | +/- 400 |         |        |
| 4-31        |   | Ground clearance, below mast - laden                                    | m1                        | in          | mm              | 14.1       | 358      | 14.1        | 357             | 14.1       | 357     |         |        |
| 4-32        | Ground clearance, center of wheelbase                             | m2  | in                        | mm          | 13.0            | 329        | 12.9     | 328         | 12.9            | 328        |         |         |        |
| 4-34-1      | Aisle width, 20' container (no operating clearance)               | Ast   | in                        | mm          | 461             | 11,715     | 461      | 11,715      | 461             | 11,715     |         |         |        |
| 4-34-2      | Aisle width, 20' container with 7.8" (200 mm) clearance           | Ast   | in                        | mm          | 469             | 11,915     | 469      | 11,915      | 469             | 11,915     |         |         |        |
| 4-34-3      | Aisle width, 20' container with 10% operating clearance           | Ast   | in                        | mm          | 507             | 12,885     | 507      | 12,885      | 507             | 12,885     |         |         |        |
| 4-34-4      | Aisle width, 40' container (no operating clearance)               | Ast   | in                        | mm          | 553             | 14,045     | 553      | 14,045      | 553             | 14,045     |         |         |        |
| 4-34-5      | Aisle width, 40' container with 7.8" (200 mm) operating clearance | Ast   | in                        | mm          | 561             | 14,245     | 561      | 14,245      | 561             | 14,245     |         |         |        |
| 4-34-6      | Aisle width, 40' container with 10% operating clearance           | Ast   | in                        | mm          | 608             | 15,450     | 608      | 15,450      | 608             | 15,450     |         |         |        |
| 4-35        | Outside turning radius  | Wa  | in                        | mm          | 316             | 8,015      | 316      | 8,015       | 316             | 8,015      |         |         |        |
| PERFORMANCE | TIER 4F   |   |                           | TIER 4F     |                 |            |          | TIER 4F     |                 |            |         |         |        |
|             | 5-1   | Travel speed, with / without load                                       |                           | mph         | km/h            | 13.0       | 14.3     | 21          | 23              | 13.0       | 14.3    | 21      | 23     |
|             | 5-1-1   | Travel speed - backwards, with / without load                           |                           | mph         | km/h            | 13.0       | 14.3     | 21          | 23              | 13.0       | 14.3    | 21      | 23     |
|             | 5-2   | Lifting speed, with / without load                                      |                           | ft/min      | m/s             | 51         | 59       | 0.26        | 0.30            | 51         | 59      | 0.26    | 0.30   |
|             | 5-3   | Lowering speed, with / without load                                     |                           | ft/min      | m/s             | 98         | 98       | 0.50        | 0.50            | 98         | 98      | 0.50    | 0.50   |
|             | 5-5   | Drawbar pull - 1 mph (1.6 km/h), with / without load                    |                           | lb          | kN              | 55,753     | 55,753   | 248         | 248             | 55,753     | 55,753  | 248     | 248    |
|             | 5-6   | Drawbar pull - max, with / without load                                 |                           | lb          | kN              | 61,822     | 61,822   | 275         | 275             | 61,822     | 61,822  | 275     | 275    |
|             | 5-7   | Gradeability - 1 mph (1.6 km/h), with / without load (6)                |                           | %           |                 | 24         |          | 38          |                 | 24         |         | 38      |        |
|             | 5-7-1   | Gradeability - max, with / without load (6)                             |                           | %           |                 | 34         |          | 46          |                 | 34         |         | 46      |        |
|             | TIER 3  |   |                           | TIER 3      |                 |            |          | TIER 3      |                 |            |         |         |        |
|             | 5-1   | Travel speed, with / without load                                       |                           | mph         | km/h            | 13.0       | 14.3     | 21          | 23              | 13.0       | 14.3    | 21      | 23     |
|             | 5-1-1   | Travel speed, with / without load, backwards                            |                           | mph         | km/h            | 13.0       | 14.3     | 21          | 23              | 13.0       | 14.3    | 21      | 23     |
|             | 5-2   | Lifting speed, with / without load                                      |                           | ft/min      | m/s             | 51         | 59       | 0.26        | 0.30            | 51         | 59      | 0.26    | 0.30   |
|             | 5-3   | Lowering speed, with / without load                                     |                           | ft/min      | m/s             | 98         | 98       | 0.50        | 0.50            | 98         | 98      | 0.50    | 0.50   |
|             | 5-5   | Drawbar pull - 1 mph (1.6 km/h), with /without load                     |                           | lb          | kN              | 55,753     | 55,753   | 248         | 248             | 55,753     | 55,753  | 248     | 248    |
|             | 5-6   | Drawbar pull - stall, with / without load                               |                           | lb          | kN              | 61,822     | 61,822   | 275         | 275             | 61,822     | 61,822  | 275     | 275    |
|             | 5-7   | Gradeability - 1 mph (1.6 km/h), with / without load (6)                |                           | %           |                 | 24         |          | 38          |                 | 24         |         | 38      |        |
| 5-8         | Gradeability - max, with / without load (6)                       |   | %                         |             | 34              |            | 46       |             | 34              |            | 46      |         |        |

# H1150XD-CH6 | H1150XD-CH 6-HIGH SPECIFICATIONS

|             |   |   |     | HYSTER      |                 |            |        | HYSTER      |                 |           |        |         |        |
|-------------|---|---|-----|-------------|-----------------|------------|--------|-------------|-----------------|-----------|--------|---------|--------|
|             |   |   |     | H1150XD-CH6 |                 |            |        | H1150XD-CH6 |                 |           |        |         |        |
| GENERAL     | 1-1   | Manufacturer  |     |             |                 |            |        |             |                 |           |        |         |        |
|             | 1-2   | Model designation                                       |     |             |                 |            |        |             |                 |           |        |         |        |
|             | 1-3   | Powertrain / drivetrain                                 |     |             | Diesel          |            |        |             | Diesel          |           |        |         |        |
|             | 1-4   | Operator type   |     |             | Seated          |            |        |             | Seated          |           |        |         |        |
|             | 1-5-1   | Rated load capacity - extended                          | Q   | lb          | kg              | 81,600     | 37,000 |             | 81,600          | 37,000    |        |         |        |
|             | 1-5-2   | Rated load capacity - retracted                         |     | lb          | kg              | 81,600     | 37,000 |             | 81,600          | 37,000    |        |         |        |
|             | 1-6-1   | Load center distance - extended                         | c   | in          | mm              | 69         | 1,739  |             | 69              | 1,739     |        |         |        |
|             | 1-6-2   | Load center distance - retracted                        |     | in          | mm              | 59         | 1,509  |             | 59              | 1,509     |        |         |        |
|             | 1-8   | Load distance (1)                                       | x   | in          | mm              | 35.4       | 900    |             | 35.4            | 900       |        |         |        |
|             | 1-9   | Wheelbase   | y   | in          | mm              | 232        | 5,900  |             | 232             | 5,900     |        |         |        |
| 1-10-1      | Stacking height at first row (number x container height)                |   |     |             | 6 x 9'6"        |            |        |             | 6 x 9'6"        |           |        |         |        |
| 1-10-2      | Stacking height at first row (number x container height)                |   |     |             | 6 x 8'6"        |            |        |             | 6 x 8'6"        |           |        |         |        |
| WEIGHTS     | 2-1   | Total truck weight without load (2)                     |     | lb          | kg              | 175,830    | 79,755 |             | 177,898         | 80,693    |        |         |        |
|             | 2-2   | Axle loading with load, front / rear                    |     | lb          | kg              | 239,541    | 26,683 | 108,654     | 12,103          | 240,915   | 27,373 | 109,277 | 12,416 |
|             | 2-3   | Axle loading without load, front / rear                 |     | lb          | kg              | 112,868    | 62,962 | 51,196      | 28,559          | 114,246   | 63,652 | 51,821  | 28,872 |
| WHEELS      | 3-1   | Tire type   |     |             | Pneumatic       |            |        |             | Pneumatic       |           |        |         |        |
|             | 3-2   | Tire size, front  |     |             | 18.00 - 25 40PR |            |        |             | 18.00 - 33 40PR |           |        |         |        |
|             | 3-3   | Tire size, rear   |     |             | 18.00 - 25 40PR |            |        |             | 18.00 - 33 40PR |           |        |         |        |
|             | 3-5   | Number of tires, front / rear (X driven)                |     |             | x 4 / 2         |            |        |             | x 4 / 2         |           |        |         |        |
|             | 3-6   | Track width, front                                      | b10 | in          | mm              | 173        | 4,400  |             | 173             | 4,400     |        |         |        |
|             | 3-7   | Track width, rear                                       | b11 | in          | mm              | 120        | 3,060  |             | 120             | 3,060     |        |         |        |
|             | 4-1   | Mast tilt, forward / back                               | α/β | Degree      |                 | 6°F / 10°B |        |             |                 | 6°F / 8°B |        |         |        |
| 4-2         | Height, mast lowered (3)  | h1  | in  | mm          | 425             | 10,802     |        | 429         | 10,895          |           |        |         |        |
| 4-3         | Freelift  | h2  | in  | mm          | 0               | 0          |        | 0           | 0               |           |        |         |        |
| 4-4-1       | Lift height at load center c1, minimum (4)                              | h3  | in  | mm          | 91              | 2,303      |        | 91          | 2,303           |           |        |         |        |
| 4-4-2       | Lift height at load center c1, maximum (4)                              | h3  | in  | mm          | 703             | 17,853     |        | 703         | 17,853          |           |        |         |        |
| 4-5         | Height, extended  | h4  | in  | mm          | 795             | 20,193     |        | 799         | 20,286          |           |        |         |        |
| 4-7         | Height, top of operator compartment (closed cab)                        | h6  | in  | mm          | 183.5           | 4,660      |        | 187.0       | 4,750           |           |        |         |        |
| 4-7-1       | Height, top of operator compartment (closed cab w/o A/C)                |   | in  | mm          | 185.2           | 4,703.0    | 4,703  | 4,758       | 188.7           | 4,793.0   | 4,793  | 4,848   |        |
| 4-7-2       | Height, top of operator compartment (closed cab w A/C)                  |   | in  | mm          | 187.3           | 4,758      |        | 190.9       | 4,848           |           |        |         |        |
| 4-7-3       | Height, top of operator compartment ( w strobe light)                   |   | in  | mm          | 188.2           | 4,780      |        | 191.8       | 4,872           |           |        |         |        |
| 4-7-4       | Height, top of operator compartment (closed cab w work lights)          |   | in  | mm          | 190.5           | 4,839      |        | 194.1       | 4,931           |           |        |         |        |
| 4-7-5       | Height, top of operator compartment (closed cab w A/C and strobe light) |   | in  | mm          | 188.2           | 4,780      |        | 191.8       | 4,872           |           |        |         |        |
| 4-8         | Seat height to seat point index (5)                                     | h7  | in  | mm          | 138.8           | 3,525      |        | 142.3       | 3,615           |           |        |         |        |
| 4-17        | Overhang  |   | in  | mm          | 43              | 1,093      |        | 43          | 1,093           |           |        |         |        |
| 4-19        | Overall length  | l1  | in  | mm          | 421             | 10,698     |        | 421         | 10,698          |           |        |         |        |
| 4-20        | Length to face of spreader  | l2  | in  | mm          | 314             | 7,968      |        | 314         | 7,968           |           |        |         |        |
| 4-21        | Overall width across all of truck                                       | b1/b2   | in  | mm          | 193             | 4,900      |        | 193         | 4,900           |           |        |         |        |
| 4-23        | Carriage spreader   |   |     | Type        | MPS Gantry      |            |        |             | MPS Gantry      |           |        |         |        |
| 4-24-1      | Spreader width, retracted   | b3  | in  | mm          | 240             | 6,100      |        | 240         | 6,100           |           |        |         |        |
| 4-24-2      | Spreader width, extended  |   | in  | mm          | 480             | 12,200     |        | 480         | 12,200          |           |        |         |        |
| 4-28        | Reach distance  | l4  | in  | mm          | +/- 9.1         | +/- 230    |        | +/- 9.1     | +/- 230         |           |        |         |        |
| 4-30        | Reach lateral from vehicle center line                                  | b8  | in  | mm          | +/- 15.7        | +/- 400    |        | +/- 15.7    | +/- 400         |           |        |         |        |
| 4-31        | Ground clearance, below mast - laden                                    | m1  | in  | mm          | 14.1            | 357        |        | 17.8        | 452             |           |        |         |        |
| 4-32        | Ground clearance, center of wheelbase                                   | m2  | in  | mm          | 12.9            | 328        |        | 16.7        | 423             |           |        |         |        |
| 4-34-1      | Aisle width, 20' container (no operating clearance)                     | Ast   | in  | mm          | 461             | 11,715     |        | 461         | 11,715          |           |        |         |        |
| 4-34-2      | Aisle width, 20' container with 7.8" (200 mm) clearance                 | Ast   | in  | mm          | 469             | 11,915     |        | 469         | 11,915          |           |        |         |        |
| 4-34-3      | Aisle width, 20' container with 10% operating clearance                 | Ast   | in  | mm          | 507             | 12,885     |        | 507         | 12,885          |           |        |         |        |
| 4-34-4      | Aisle width, 40' container (no operating clearance)                     | Ast   | in  | mm          | 553             | 14,045     |        | 553         | 14,045          |           |        |         |        |
| 4-34-5      | Aisle width, 40' container with 7.8" (200 mm) operating clearance       | Ast   | in  | mm          | 561             | 14,245     |        | 561         | 14,245          |           |        |         |        |
| 4-34-6      | Aisle width, 40' container with 10% operating clearance                 | Ast   | in  | mm          | 608             | 15,450     |        | 608         | 15,450          |           |        |         |        |
| 4-35        | Outside turning radius  | Wa  | in  | mm          | 316             | 8,015      |        | 316         | 8,015           |           |        |         |        |
| PERFORMANCE | TIER 4F   |   |     | TIER 4F     |                 |            |        | TIER 4F     |                 |           |        |         |        |
|             | 5-1   | Travel speed, with / without load                       |     | mph         | km/h            | 13.0       | 14.3   | 21          | 23              | 13.0      | 14.3   | 21      | 23     |
|             | 5-1-1   | Travel speed - backwards, with / without load           |     | mph         | km/h            | 13.0       | 14.3   | 21          | 23              | 13.0      | 14.3   | 21      | 23     |
|             | 5-2   | Lifting speed, with / without load                      |     | ft/min      | m/s             | 51         | 59     | 0.26        | 0.30            | 51        | 59     | 0.26    | 0.30   |
|             | 5-3   | Lowering speed, with / without load                     |     | ft/min      | m/s             | 98         | 98     | 0.50        | 0.50            | 98        | 98     | 0.50    | 0.50   |
|             | 5-5   | Drawbar pull - 1 mph (1.6 km/h), with / without load    |     | lb          | kN              | 55,753     | 55,753 | 248         | 248             | 55,753    | 55,753 | 248     | 248    |
|             | 5-6   | Drawbar pull - max, with / without load                 |     | lb          | kN              | 61,822     | 61,822 | 275         | 275             | 61,822    | 61,822 | 275     | 275    |
|             | 5-7   | Gradeability - 1 mph (1.6 km/h, with / without load (6) |     | %           |                 | 24         |        | 38          |                 | 24        |        | 38      |        |
|             | 5-7-1   | Gradeability - max, with / without load (6)             |     | %           |                 | 34         |        | 46          |                 | 34        |        | 46      |        |
|             | TIER 3  |   |     | TIER 3      |                 |            |        | TIER 3      |                 |           |        |         |        |
|             | 5-1   | Travel speed, with / without load                       |     | mph         | km/h            | 13.0       | 14.3   | 21          | 23              | 13.0      | 14.3   | 21      | 23     |
|             | 5-1-1   | Travel speed, with / without load, backwards            |     | mph         | km/h            | 13.0       | 14.3   | 21          | 23              | 13.0      | 14.3   | 21      | 23     |
|             | 5-2   | Lifting speed, with / without load                      |     | ft/min      | m/s             | 51         | 59     | 0.26        | 0.30            | 51        | 59     | 0.26    | 0.30   |
|             | 5-3   | Lowering speed, with / without load                     |     | ft/min      | m/s             | 98         | 98     | 0.50        | 0.50            | 98        | 98     | 0.50    | 0.50   |
|             | 5-5   | Drawbar pull - 1 mph (1.6 km/h), with /without load     |     | lb          | kN              | 55,753     | 55,753 | 248         | 248             | 55,753    | 55,753 | 248     | 248    |
|             | 5-6   | Drawbar pull - stall, with / without load               |     | lb          | kN              | 61,822     | 61,822 | 275         | 275             | 61,822    | 61,822 | 275     | 275    |
| 5-7         | Gradeability - 1 mph (1.6 km/h, with / without load (6)                 |   | %   |             | 24              |            | 38     |             | 24              |           | 38     |         |        |
| 5-8         | Gradeability - max, with / without load (6)                             |   | %   |             | 34              |            | 46     |             | 34              |           | 46     |         |        |

# POWERTRAINS

|          |  |  |                   | TIER 3                               |  |            |         | TIER 4                               |  |              |  |
|----------|--|--|-------------------|--------------------------------------|--|------------|---------|--------------------------------------|--|--------------|--|
| GENERAL  | 1-1  | Manufacturer                                 |                   | HYSTER                               |  |            |         | HYSTER                               |  |              |  |
|          | 1-2  | Model designation                            |                   | H1050-H1150XD-CH                     |  |            |         | H1050-1150XD-CH                      |  |              |  |
|          | 1-3  | Powertrain / drivetrain                      |                   | Diesel                               |  |            |         | Diesel                               |  |              |  |
| ENGINE   | 7-1  | Engine Manufacturer / model                  |                   | Cummins / X12                        |  |            |         | Cummins / X12                        |  |              |  |
|          | 7-1a                                       | EPA / CE Compliance                          |                   | Tier 3 / Stage IIIA                  |  |            |         | Tier 4 / Stage V                     |  |              |  |
|          | 7-2  | Engine power output - rated                  | hp   kW           | 335@2,100                            |  | 250@2,100  |         | 355@2,000                            |  | 265@2,000    |  |
|          | 7-2-1                                      | Engine power output - peak                   | hp   kW           | 370@1,800                            |  | 276@1,800  |         | 380@1,700                            |  | 283@1,700    |  |
|          | 7-3-1                                      | Engine torque @ rpm (1/min)                  | lb-ft   N-m       | 1,235@1500                           |  | 1,674@1500 |         | 1,374@ 1,400                         |  | 1,862@ 1,400 |  |
|          | 7-4  | Number of cylinders / displacement           | # / in3   # / cm3 | 6 / 720                              |  | 6 / 11,800 |         | 6 / 720                              |  | 6 / 11,800   |  |
|          | x  | Turbocharger                                 | Type              | Wastegate, water-cooled              |  |            |         | Wastegate, water-cooled              |  |              |  |
|          | 7-8  | Alternator output                            | Amps              | 110                                  |  |            |         | 120                                  |  |              |  |
|          | 7-9  | Electrical system voltage                    | Volts             | 24                                   |  |            |         | 24                                   |  |              |  |
|          | 7-10                                       | Battery voltage, rated capacity              | V / Ah            | 24 / 102                             |  |            |         | 24 / 102                             |  |              |  |
| DRIVE    | 8-0  | Drive control / transmission                 | Type              | Powershift Transmission              |  |            |         | Powershift Transmission              |  |              |  |
|          | 8-1  | Type of drive unit                           | Type              | Torque Converter                     |  |            |         | Torque Converter                     |  |              |  |
|          | 8-2  | Transmission manufacturer / type             | Type              | Dana Spicer Off-Highway TE-30        |  |            |         | Dana Spicer Off-Highway TE-30        |  |              |  |
|          | 8-2-1                                      | Transmission speeds forward / backward       | #                 | 5 / 3                                |  |            |         | 5 / 3                                |  |              |  |
|          | 8-3  | Wheel drive / drive axle manufacturer / type | Type              | Kessler D102                         |  |            |         | Kessler D102                         |  |              |  |
|          | 8-4  | Service brake                                | Type              | Oil immersed (wet) disc              |  |            |         | Oil immersed (wet) disc              |  |              |  |
| SPREADER | 8-5  | Parking brake                                | Type              | Spring apply, dry disc on drive axle |  |            |         | Spring apply, dry disc on drive axle |  |              |  |
|          | 9-1  | Spreader manufacturer / type                 | Type              | ELME / 818 Gantry Top Lift           |  |            |         | ELME / 818 Gantry Top Lift           |  |              |  |
|          | 9-2  | Pile slope type                              | Type              | Mechanical Pile Slope                |  |            |         | Mechanical Pile Slope                |  |              |  |
|          | 9-3  | Size of containers                           | ft                | ISO 20' - 40'                        |  |            |         | ISO 20' - 40'                        |  |              |  |
|          | 9-4  | Side shift                                   | in   mm           | +/- 15.7                             |  | +/- 400    |         | +/- 15.7                             |  | +/- 400      |  |
|          | 9-5  | Pile slope spreader                          | Degrees           | +/- 2.5                              |  |            |         | +/- 2.5                              |  |              |  |
|          | 9-6  | Rotation angle                               | Degrees           | +/- 3.0                              |  |            |         | +/- 3.0                              |  |              |  |
|          | 9-7  | Longitudinal adjustment                      | in   mm           | +/- 9.4                              |  | +/- 240    |         | +/- 9.4                              |  | +/- 240      |  |
| 9-8      | Telescoping time, extend / retract         | seconds                                      | 12 / 12           |                                      |  |            | 12 / 12 |                                      |  |              |  |
| MISC     | 10-1                                       | Operating pressure for attachments           | psi   bar         | 2,031                                |  | 140        |         | 2,031                                |  | 140          |  |
|          | 10-2                                       | Oil volume for attachments                   | gpm   l/min       | 23                                   |  | 90         |         | 23                                   |  | 90           |  |
|          | 10-3                                       | Hydraulic oil tank capacity, H1050 / H1150   | gal   l           | 163   625                            |  | 189   725  |         | 163   625                            |  | 189   725    |  |
|          | 10-4                                       | Fuel tank capacity                           | gal   l           | 222                                  |  | 855        |         | 222                                  |  | 855          |  |
|          | 10-4-1                                     | DEF tank capacity                            | gal   l           | N/A                                  |  |            |         | 24                                   |  | 92           |  |
|          | 10-5                                       | Steering design                              | Type              | Hydrostatic                          |  |            |         | Hydrostatic                          |  |              |  |
|          | 10-6                                       | Number of steering rotation                  | #                 | 6.0                                  |  |            |         | 6.0                                  |  |              |  |
|          | 10-7                                       | Sound pressure level at driver's seat LwAZ   | dB (A)            | 74                                   |  |            |         | 74                                   |  |              |  |
| 10-7-1   | Sound pressure level at driver's seat LwAZ | dB   | 109               |                                      |  |            | 109     |                                      |  |              |  |

## NOTES:

Specifications are affected by the condition of the vehicle and how it is equipped, as well as the nature and condition of the operating area. Inform your dealer of the nature and condition of the intended operating area when purchasing your Hyster® truck.


- (1) Center of drive axle to front face of spreader.
- (2) Based on complete truck with cab, pneumatic tires, mast as specified and standard spreader.
- (3) Unladen with new tires
- (4) Distance from ground to twistlocks
- (5) Full suspension seat in depressed position
- (6) Gradeability figures are provided for comparison of tractive performance but are not intended to endorse the operation of the vehicle on the stated inclines.

## NOTICE:

Care must be exercised when handling elevated loads. Operators must be trained and must read, understand and follow the instructions contained in the Operating Manual. All values are nominal values and they are subject to tolerances. For further information, please contact the manufacturer. Hyster products are subject to change without notice. Lift trucks illustrated may feature optional equipment. Values may vary with alternative configurations.

**CERTIFICATION:** Hyster lift trucks meet the design and construction requirements of B56.1-1969, per OSHA Section 1910.178(a)(2), and also comply with the B56.1 revision in effect at time of manufacture. Certification of compliance with the applicable ANSI standards appears on the lift truck. Performance specifications are for a truck equipped as described under Standard Equipment on this Technical Guide. Performance specifications are affected by the condition of the vehicle and how it is equipped, as well as by the nature, condition of the operating area, proper service and maintenance of the vehicle. If these specifications are critical, the proposed application should be discussed with your dealer.

**NOTE:** Specifications, unless otherwise listed, are for a standard truck without optional equipment.

 **Safety:** This truck conforms to the current EU and ANSI requirements.

Specification data is based on VDI 2198.



# CAPACITY CHARTS

| ALL TIRES | H1150XD-CH 5-High Mast |        | H1150XD-CH 6-High Mast (6° fwd / 8° rwd Mast Tilt Required) |        |           |        |               |        |           |        |          |        |
|-----------|------------------------|--------|---|--------|-----------|--------|---------------|--------|-----------|--------|----------|--------|
|           | 1st - 5th Container    |        | 1st - 5th Container   |        |           |        | 6th Container |        |           |        |          |        |
|           | MPS / PPS              |        | MPS / PPS   |        |           |        | MPS           |        |           |        | PPS      |        |
|           | Retracted / Extended   |        | Retracted / Extended  |        | Retracted |        | Extended      |        | Retracted |        | Extended |        |
|           | lb                     | kg     | lb  | kg     | lb        | kg     | lb            | kg     | lb        | kg     | lb       | kg     |
|           | 88,185                 | 40,000 | 88,185  | 40,000 | 82,200    | 37,290 | 82,200        | 37,290 | 80,000    | 36,290 | 80,000   | 36,290 |

| ALL TIRES | H1050XD-CH 4-High Mast |        | H1050XD-CH 5-High Mast |        |           |        |               |        |           |        |          |        |
|-----------|------------------------|--------|------------------------|--------|-----------|--------|---------------|--------|-----------|--------|----------|--------|
|           | 1st - 4th Container    |        | 1st - 4th Container    |        |           |        | 5th Container |        |           |        |          |        |
|           | MPS / PPS              |        | MPS / PPS              |        |           |        | MPS           |        |           |        | PPS      |        |
|           | Retracted / Extended   |        | Retracted / Extended   |        | Retracted |        | Extended      |        | Retracted |        | Extended |        |
|           | lb                     | kg     | lb                     | kg     | lb        | kg     | lb            | kg     | lb        | kg     | lb       | kg     |
|           | 90,390                 | 41,000 | 90,390                 | 41,000 | 90,390    | 41,000 | 82,670        | 37,500 | 88,185    | 40,000 | 80,468   | 36,500 |



# FEATURES AND OPTIONS

| PERFORMANCE   | STD | OPT |
|---|-----|-----|
| Cummins x12 diesel engine rated 355 hp tier 4 / 265 kw stage v                              | x   |     |
| Cummins x12 diesel engine rated 335 hp tier 3 / 250 kw stage IIIA*                          | x   |     |
| Tier 4 / stage IV compliant   | x   |     |
| Tier 3 / stage IIIA compliant   | x   |     |
| Wastegate turbocharger, water cooled  | x   |     |
| Hibernate idle  | x   |     |
| On-demand cooling fan   | x   |     |
| 120 Amp alternator  | x   |     |
| Performance modes selectable in integrated performance display                              | x   |     |
| Heavy duty air intake   | x   |     |
| Spicer off-highway TE-30 5-speed auto-shifting transmission                                 | x   |     |
| Kessler D102 drive axle with wet disc brakes  | x   |     |
| Kessler D102 extra wide drive axle with wet disc brakes (mandatory for 6-high)              |     | x   |
| DRIVE   | STD | OPT |
| Travel speed limiter - unconditional and customer adjustable                                |     | x   |
| Travel speed limiter - loaded - based on container position, mast tilt and spreader slewing |     | x   |
| 18.00-25 40PR pneumatic bias ply drive and steer tires                                      | x   |     |
| 18.00-33 36PR Pneumatic bias ply drive and steer tires                                      |     | x   |
| 18.00-R25 Michelin XZM2 plus pneumatic radial drive and steer tires                         |     | x   |
| 18.00-R25 Goodyear slick radial drive and steer tires                                       |     | x   |
| 18.00-R36 Michelin XZM pneumatic radial drive and steer tires                               |     | x   |
| LIFT  | STD | OPT |
| Hydraulic system with triple gear pump  | x   |     |
| On-demand load sensing hydraulic system   | x   |     |
| Automatic throttle-up when lifting (in neutral or inching)                                  | x   |     |
| 2-stage non free lift mast for 3-high stacking  |     | x   |
| 2-stage non free lift mast for 4-high stacking  |     | x   |
| 2-stage non free lift mast for 5-high stacking  | x   |     |
| 2-stage non free lift mast for 6-high stacking  |     | x   |
| Mast tilt - 6° forward / 8° back  | x   |     |
| Mast tilt - 6° forward / 10° back   |     | x   |
| Hydraulic accumulator   | x   |     |
| Hydraulic system temperature protection with performance de-rate                            |     | x   |
| HANDLING  | STD | OPT |
| CANbus spreader, Hyster model 818 with gantry carriage                                      | x   |     |
| CANbus spreader controls  | x   |     |
| Mechanical pile slope   | x   |     |
| Powered pile slope  |     | x   |
| Wide twistlock position (WTP) container handling spreader                                   |     | x   |
| 4 Lifting eyes located on end beam corners  | x   |     |
| 4 Lifting eyes located under center beam of spreader  |     | x   |
| Spreader guides located 19.9" (506 mm) inwards from center of spreader end beam             |     | x   |
| Automatic one-touch extend/retract (20'/40') for spreader                                   |     | x   |
| Mast tilt indicator - mechanical  | x   |     |
| Stops for 30' containers  |     | x   |
| Stops for 20-40' containers   |     | x   |

| HANDLING (CONTINUED)   | STD | OPT |
|--|-----|-----|
| Overlowering protection  | x   |     |
| Additional overlowering protection (interrupts lowering if twistlocks are not seated.) |     | x   |
| ERGONOMICS   | STD | OPT |
| Enclosed operator cabin  | x   |     |
| Auto tip-up cabin 10°  |     | x   |
| Isolated cabin mounting for low noise and vibration                                    | x   |     |
| Mechanical suspension seat   | x   |     |
| Air suspension seat  |     | x   |
| Deluxe air suspension seat   |     | x   |
| Low backrest seat  | x   |     |
| High backrest seat   |     | x   |
| Armrest on left side   | x   |     |
| Cloth seat cover   | x   |     |
| Vinyl seat cover   |     | x   |
| Seat heating   |     | x   |
| Seat ventilation   |     | x   |
| 2-point high visibility seatbelt   | x   |     |
| 3-point high visibility seatbelt   |     | x   |
| Lateral seat sliding mechanism   |     | x   |
| Floor mat  | x   |     |
| Interior dome light  | x   |     |
| Front, top and rear wipers   | x   |     |
| "H"-pattern front wiper  |     | x   |
| "I"-pattern front wiper  | x   |     |
| Intermittent wipers  | x   |     |
| Front and rear window defrosters   | x   |     |
| Tinted operator compartment windows (top, rear and door)                               |     | x   |
| Tinted operator compartment top window   |     | x   |
| Left side handrails, stairway and cabin door   | x   |     |
| Right side door  | x   |     |
| Right side handrails and stairway  |     | x   |
| Wire mesh installed on top of operator compartment                                     |     | x   |
| 7" Integrated performance display  | x   |     |
| Dual 7" Integrated performance display   |     | x   |
| Joystick hydraulic control integrated in control arm                                   | x   |     |
| Steering wheel with spinner knob   | x   |     |
| Directional control on joystick  |     | x   |
| Park brake - push button applied   | x   |     |
| Park brake - automatically applied   |     | x   |
| Interior wide angle mirrors  | x   |     |
| Heater with adjustable speed fan   | x   |     |
| Telescoping & tilting steering column  | x   |     |
| USB outlet inside armrest  | x   |     |
| 24-12-volt DC converter with 1 socket and 2 USB outlets                                | x   |     |
| 24-12-volt DC converter with 2 sockets and 2 USB outlets                               |     | x   |
| Air conditioning   |     | x   |
| Automatic climate control  |     | x   |
| Reading light  |     | x   |
| Sun shades on top and rear   |     | x   |
| Sun visors front window  |     | x   |


# FEATURES AND OPTIONS

| <b>ERGONOMICS (CONTINUED)</b>                                | <b>STD</b> | <b>OPT</b> |
|--|------------|------------|
| Cloth trainer seat with 2-point seatbelt                     |            | x          |
| Recirculation fan  | x          |            |
| Accessory mounting bracket on cab front right pillar         |            | x          |
| Document holder on cab front right pillar                    |            | x          |
| Heated top window  |            | x          |
| Radio preparation with 2 speakers and antenna                |            | x          |
| <b>VISIBILITY</b>  | <b>STD</b> | <b>OPT</b> |
| Top window with armoured glass                               | x          |            |
| Steel bars under armored glass top window                    |            | x          |
| External wide angle mirrors mounted on rear of front fenders | x          |            |
| Exterior mirrors mounted to handrails                        |            | x          |
| Rear view camera system                                      |            | x          |
| Radar object detection system                                |            | x          |
| Halogen work lights  | x          |            |
| High performance led work lights                             |            | x          |
| Four halogen head lights mounted on front fenders            | x          |            |
| Four led head lights mounted on front fenders                |            | x          |
| Four cabin mounted work lights                               |            | x          |
| Two rearward work lights mounted on the cabin                | x          |            |
| LED stop/tail/brake lights                                   | x          |            |
| Turn signals, hazard & marker lights (LED)                   | x          |            |
| One engine compartment light                                 | x          |            |
| <b>OPERATION</b>   | <b>STD</b> | <b>OPT</b> |
| Air horn 112 DBA   | x          |            |
| Visible alarm – amber strobe light, ignition activated       | x          |            |
| Audible alarm – reverse direction activated                  | x          |            |
| Forward motion alarm   |            | x          |
| Seatbelt interlock for engine start and truck operation      |            | x          |
| Green seatbelt indicator light on top of operator cabin      |            | x          |
| Hydraulic load weighing system                               |            | x          |
| Tire pressure monitoring system                              |            | x          |

| <b>OPERATION (CONTINUED)</b>                                      | <b>STD</b> | <b>OPT</b> |
|---|------------|------------|
| Air conditioning shut-off with open door                          |            | x          |
| Automatic engine shutdown with timer                              |            | x          |
| Delayed engine shutdown for turbo cool down                       |            | x          |
| Lockable battery disconnect switch                                | x          |            |
| Battery jump start connector (nato plug)                          |            | x          |
| Truck start with key switch and start button                      | x          |            |
| Operator password (display) for truck start                       | x          |            |
| Fuses below 30 amps replaced by electric circuit breakers         |            | x          |
| Non-lockable fuel cap   | x          |            |
| Lockable fuel cap   |            | x          |
| Fuel strainer in fuel filler neck                                 |            | x          |
| Hyster Tracker™ wireless asset management - access / verification |            | x          |
| Hyster Tracker™ wireless asset management - monitoring            | x          |            |
| Auto greasing system for spreader                                 |            | x          |
| Auto greasing system for base truck                               |            | x          |
| Centralized greasing provision for upper chain sheaves            |            | x          |
| 24-volt electrical system   | x          |            |
| Engine block heater 110 or 240-volt                               |            | x          |
| Second hour meter reader near fuel tank                           |            | x          |
| Steer wheel lug nut protection                                    | x          |            |
| <b>APPEARANCE</b>   | <b>STD</b> | <b>OPT</b> |
| Hyster yellow paint base truck                                    | x          |            |
| Special paint base truck  |            | x          |
| Hazard warning striping on counterweight                          |            | x          |
| <b>SUPPLEMENTAL</b>   | <b>STD</b> | <b>OPT</b> |
| Literature package  | x          |            |
| Operator's manual   | x          |            |
| CE certification  |            | x          |
| Warranty: 12 months / 2,000 hours parts manufacturer's warranty*  | x          |            |



Hyster Company  
P.O. Box 7006, Greenville, North Carolina 27835-7006

© 2025 Hyster-Yale Materials Handling, Inc., all rights reserved. Hyster and  are trademarks of Hyster-Yale Materials Handling, Inc. Hyster products are subject to change without notice. Trucks may be shown with optional equipment and/or features not available in all regions.